



## Enhanced function-means modeling supporting design space exploration

Downloaded from: <https://research.chalmers.se>, 2024-04-20 06:14 UTC

Citation for the original published paper (version of record):

Müller, J., Isaksson, O., Landahl, J. et al (2019). Enhanced function-means modeling supporting design space exploration. Artificial Intelligence for Engineering Design, Analysis and Manufacturing: AIEDAM, 33(4): 502-516. <http://dx.doi.org/10.1017/S0890060419000271>

N.B. When citing this work, cite the original published paper.

## Research Article

**Cite this article:** Müller JR, Isaksson O, Landahl J, Raja V, Panarotto M, Levandowski C, Raudberget D (2019). Enhanced function-means modeling supporting design space exploration. *Artificial Intelligence for Engineering Design, Analysis and Manufacturing* **33**, 502–516. <https://doi.org/10.1017/S0890060419000271>

Received: 9 October 2018  
Revised: 2 September 2019  
Accepted: 2 September 2019  
First published online: 11 October 2019


### Key words:

Concept design; design space exploration; DSM; enhanced function-means modeling; function modeling; radical innovation

### Author for correspondence:

Jakob R. Müller, E-mail: [jakob.muller@chalmers.se](mailto:jakob.muller@chalmers.se)

# Enhanced function-means modeling supporting design space exploration

Jakob R. Müller<sup>1</sup> , Ola Isaksson<sup>1</sup>, Jonas Landahl<sup>1</sup>, Visakha Raja<sup>1,2</sup>, Massimo Panarotto<sup>1</sup>, Christoffer Levandowski<sup>1</sup> and Dag Raudberget<sup>1</sup>

<sup>1</sup>Department of Industrial and Materials Science, Chalmers University of Technology, Hörsalsvägen 7A, Gothenburg SE-412-96, Sweden and <sup>2</sup>GKN Aerospace Sweden AB, SE-461-81, Trollhättan, Sweden

## Abstract

One problem in incremental product development is that geometric models are limited in their ability to explore radical alternative design variants. In this publication, a function modeling approach is suggested to increase the amount and variety of explored alternatives, since function models (FM) provide greater model flexibility. An enhanced function-means (EF-M) model capable of representing the constraints of the design space as well as alternative designs is created through a reverse engineering process. This model is then used as a basis for the development of a new product variant. This work describes the EF-M model's capabilities for representing the design space and integrating novel solutions into the existing product structure and explains how these capabilities support the exploration of alternative design variants. First-order analyses are executed, and the EF-M model is used to capture and represent already existing design information for further analyses. Based on these findings, a design space exploration approach is developed. It positions the FM as a connection between legacy and novel designs and, through this, allows for the exploration of more diverse product concepts. This approach is based on three steps – decomposition, design, and embodiment – and builds on the capabilities of EF-M to model alternative solutions for different requirements. While the embodiment step of creating the novel product's geometry is still a topic for future research, the design space exploration concept can be used to enable wider, more methodological, and potentially automated design space exploration.

## Introduction

To be able to gain or keep a market advantage, product developing companies need to improve their products. Often, this is done in an evolutionary way, where existing designs are iteratively improved. However, the value of radical innovation has been shown in business literature (Lawson and Samson, 2001), as has the need to combine radical and incremental development (Henderson and Clark, 1990).

New product concepts in industrial practice commonly build on already existing CAD models of a “legacy design”, which is to be developed further. However, CAD models have a certain rigidity due to the nature of their modeling methods (Heikkinen *et al.*, 2018) and therefore do not support the introduction of novel solutions into an existing model – after all, CAD models “are made for drawing, not design” (Woodbury, 1991). This has already been observed to obstruct the assessment and subsequent introduction of novel product solutions in an industrial case (Isaksson *et al.*, 2016), leading to a reduction in the number of explored designs. Woodbury and Burrow (2006) noted that CAD models are insufficient for a proper design space exploration due to their lack of product information beyond the shape. They also discuss the need for further research into methods and tools that provide a product definition which allows designs to be compared according to how they satisfy their functional requirements (FR). Still, the CAD model is used as the standard product representation in industrial applications (Eckert *et al.*, 2015).

The need for a method for design space exploration in general, and specifically toward radical and novel solutions, is derived from these observations. Existing design space exploration approaches focus mainly on exploring novel solutions and concepts for so-called greenfield product development; however, they are less useful for extending upon already existing designs, as is common practice in product development. Another observed challenge is most approaches' limited ability to integrate novel solutions and describe the unique characteristics of the alternative concepts. This need encompasses the ability to describe and populate the design space as well as to compare designs in different states of development: entirely novel, legacy, and combinations of both to different degrees.

As stated above, CAD models do not seem to be appropriate for this endeavor. While not regularly used by practitioners (Tomiya *et al.*, 2013), function models (FM) provide an abstract product representation able to depict the relationships between multiple product

© Cambridge University Press 2019. This is an Open Access article, distributed under the terms of the Creative Commons Attribution-NonCommercial-NoDerivatives licence (<http://creativecommons.org/licenses/by-nc-nd/4.0/>), which permits non-commercial re-use, distribution, and reproduction in any medium, provided the original work is unaltered and is properly cited. The written permission of Cambridge University Press must be obtained for commercial re-use or in order to create a derivative work.

properties such as requirements, solutions, and constraints. Different modeling approaches focus on different aspects, for example, transformative actions, function–solution relationships, or requirements fulfillment. Furthermore, FMs are commonly created on a lower fidelity level than geometry models and therefore provide greater flexibility in terms of the introduction or alteration of model elements. Many function modeling methodologies and examples presented in academic publications focus on either the functional decomposition of existing designs for the purpose of analysis or illustration (e.g., Albers and Sadowski, 2014; Gericke and Eisenbart, 2017) or on a from-scratch product development approach (e.g., Helms and Shea, 2012; Johannesson and Claesson, 2005). The ability to extend and build onto existing product models, which would more closely resemble the industrial practice of incremental product development (Wyatt *et al.*, 2009), is developed to a lesser extent. Although Mokhtarian *et al.* (2017) as well as Eisenbart *et al.* (2015) build their case studies upon reverse-engineered FMs, their innovative process focuses mainly on the suggestion of possible improvement areas based on the analysis of the FM.

From these observations, there appears to be a lack of product development methods which support the exploration of designs with a larger variation to an existing legacy design in a fast and analytical manner. No methods have been found which build onto existing designs, are able to represent a wide array of fundamentally different solutions, and also allow for the analysis of these solutions for comparison and selection.

Therefore, in this publication, a method is presented which allows to methodically explore a wide array of alternative product concepts, while employing reduced resources compared to a CAD modeling approach. In this method, an existing design, the so-called legacy design, is decomposed into a FM, which provides the framework for design space representation as well as population and analysis of the different concepts. The most promising concept is chosen for embodiment based on the analysis of the alternative concepts in the FM.

In this publication, “Related work” explains the background and development of enhanced function-means (EF-M) modeling. In “A glue gun modeling example”, an EF-M model is created through reverse engineering of a glue gun, which is based on the benchmark problem proposed by Summers *et al.* (2013). The model is then extended with novel solutions based on a change in requirements. These novel solutions are down selected to feasible ones, and an example for possible first-order analysis on systemic product parameters is performed. While the glue gun presented in this work is purely exemplary, the discussions in “Discussion” are based on experiences with the introduction of novel solutions into complex products in the aerospace industry over the course of multiple research projects. The challenges and opportunities that have been observed with the modeling approach are discussed in the glue gun context. Furthermore, its potential use in the context of design space exploration and generative design is discussed. “Conclusion” provides concluding remarks.

## Related work

The presented method builds upon function modeling as a means for product representation. This section illustrates the concepts and methodologies of function modeling applied in the proposed method.

The method is based on the decomposition that is the analysis for the purpose of creating a specific model, of a legacy design.

“Legacy design”, a term borrowed from Prasad (2006), describes the existing design, which is used as the basis for an evolutionary product development approach, as has been described by Eckert *et al.* (2015) as industrial practice. Building onto the legacy design is the “novel design”, which uses new technology, concepts, or solutions to fulfill the same or updated requirements and needs, thereby expanding the design space around the legacy design.

## Function modeling

The fundamental idea of function modeling is to capture the functionality of a product without the need to explicate its geometry. While the use of the term “function” in product development is highly discussed in the research community (Vermaas, 2013), the definition used in this publication is the same as the one proposed by Gero (1990): a function describes “the intended behavior of the product”.

In a product engineering context, models provide a basis for design decisions. A model can represent an original product, a part of it (a system) or a phenomenon. Depending on its use case, a model represents certain aspects of the original product which are deemed necessary to draw conclusions about the behavior but is always limited to the subset of aspects that are relevant for the model’s purpose (Lindemann, 2007). Consequently, a FM is an abstraction of the product that describes the intended behavior of the product, thereby often including the product’s architecture. FMs are used to recognize fundamental problems, show a potential segmentation of a product or prepare the product’s modularization into a platform, and describe the architecture of the product (Pahl *et al.*, 2003).

Other researchers already suggest function modeling as support for design space exploration. For example, Mokhtarian *et al.* (2017) also use the dimensional analysis conceptual modeling (DACM) framework on the benchmark product “glue gun” and combine a reverse engineering approach with incremental improvement. The DACM framework builds on the function–behavior–structure (FBS) model as presented by Gero and Kannengiesser (2004). The modeling approach provides a detailed overview of the flows of material and energy in the system, as well as the relations between design variables. The attempt to improve the system is performed on a variable analysis basis and shows contradictions and points to specific design parameters (DPs) to focus on for the designers. However, since DACM provides no concrete solution modeling, no new concept is represented in the model. While it might be possible to transfer the variations of DPs to higher fidelity models, no possible solution for this is presented.

A similar approach to design space exploration using FM is presented by Eisenbart *et al.* (2015) using the integrated function modeling (IFM) framework. Practitioners applying IFM use design structure matrices (DSM) at the core of that function modeling framework to analyze the potential for improvement in existing designs. However, the matter of how these suggestions could be implemented in the modeling environment is not addressed.

## Function-means modeling

The function-means (F-M) model was originally developed by Tjalve (1976) and Andreassen (1980) and has evolved over time. An F-M model has a hierarchical structure, where systems are decomposed into subordinate sub-systems. Thereby the F-M

tree follows Hubka's law: "The primary functions of a machine system are supported by a hierarchy of subordinate functions, which are determined by the chosen means" (Hubka and Eder, 1988). Analogous to axiomatic design (Suh, 1990), it describes the relation between FRs and DPs. This alternating modeling approach between the search and solution spaces highlights the fact that a requirement cannot be decomposed into other requirements without identifying intermediate solutions. F-M modeling is a systematic way of finding design solutions (DSs) that fulfill FRs. An FR explains what a product, or an entity of a product, should actively or passively do. The FR subsequently motivates the existence of a specific DS. A DS describes a technical solution and does not necessarily refer to a specific physical part of the product. Commonly, FRs are expressed in verb + noun terms, similar to, for example, the functional basis (Hirtz et al., 2002). However, this is not a constraint, and human readability of the function terms is preferred over coherence in terminology. While it is also encouraged to keep the description of DS short, a comprehensive explanation is more practical for all users.

Malmqvist (1997) elaborates on F-M's capabilities as a design rationale modeling tool or, in his words, "design history capture". F-M modeling in this form is suggested for the representation of FRs and support in generating alternative solutions for them. It is extended by specifying constraints, limiting the design space and objectives that provide a value measurement of alternative solutions.

### EF-M modeling

Schachinger and Johannesson (2000) enhanced the F-M model by separating FRs from nonfunctional requirements, where the nonfunctional requirements are represented as *constraints* (C). A C delimits the design space for the respective DS. A constraint is defined as a requirement that describes what a design solution must, or must not, be or do. This enhancement enables the modeling of the underlying requirements of a DS, and the modeled interactions between systems explain why trade-offs have been made. Thus, an EF-M tree can carry information about both "why things are" and "why things are the way they are". The basic element of this teleological notion is the FR – stating a *required function* of the product. This describes the desired behavior of the product, analogous to the definition of "function" given above. According to Suh (1990), an FR expresses "the design's objectives by defining it in terms of specific requirements". In this role, the FR may contain contextual information, such as a specific use case or environment, or parameters quantifying the desired behavior, such as a desired temperature, torque, or volume.

A DS describes a technical principle, a design, or another solution which fulfills an FR. On this point, EF-M can be distinguished from axiomatic design, where the DPs fulfilling an FR are explicitly defined as being "physical solutions" (Suh, 1990). Opposed to that, a DS in EF-M remains entirely in the functional domain, expressing a means instead of a geometry (Gedell and Johannesson, 2013). While this is especially true on the higher levels of the EF-M tree, DS on the lowest (concrete) levels may be connected to the physical domain and therefore be adorned with parameters expressing physical properties – subsequently DPs – of the product, such as dimensions. However, the physical elements are not part of the EF-M model (Levandowski et al., 2014) but reside in their own domain. A DS, when modeled as a solution to an FR, is assumed to fully fulfill this function, as long as it does not violate any constraints on higher levels.

When developing a product from scratch, that is, in greenfield development, the EF-M tree is created top-down. First, the main FR is defined. Then, a solution which fulfills the function is conceived and subsequently the lower levels are modeled as further FRs and DSs. When building onto a legacy design, the EF-M tree is modeled from the bottom up in a functional decomposition, through identifying the smallest functions on the geometry level and then collecting them into main functions. This approach is described in detail by Borgue et al. (2018).

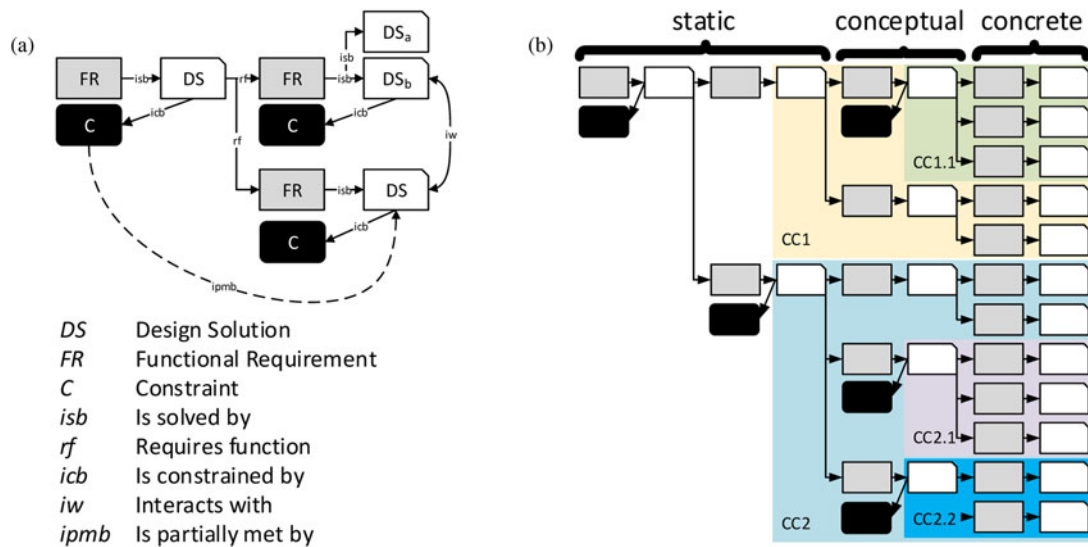
Following Suh's axiom of independence (Suh, 1990), the cardinality between an FR and a DS is "one-to-one". To connect the objects, several relations are modeled; an FR is *solved by* (isb) a DS, and the DS is *constrained by* (icb) various Cs. The cardinality between a chosen DS and its constraining C is "one-to-n" ( $n \geq 0$ ), that is, a DS can have none or several constraints. Each alternative DS *requires functions* (rf) on its own and therefore needs to be decomposed into sub-FRs. The cardinality between a DS and its sub-FRs is "one-to-n" ( $n \geq 1$ ). In Figure 1a, a DS is decomposed into two FRs. The DSs fulfilling these sub-FRs are constrained by their own Cs. A constraint can be inherited ( $C_1 = C_{11} = C_{12}$ ), such as a common quality constraint, or distributed ( $C_1 = C_{11} + C_{12}$ ), such as a weight constraint. Therefore, a constraint is *partly met by* (ipmb) a DS on a lower level of abstraction. The resulting EF-M tree syntax is presented in Figure 1a.

To serve the modeling of complex systems, in which entities will interact with each other in different ways, system dependencies have to be represented. A DS can *interact with* (iw) another DS. These iw can represent four different types of interactions, as described by Pimmler and Eppinger (1994): (1) physical space, (2) energy, (3) information, and (4) materials. These system dependencies can be used for matrix-based analyses of the structure model, for example, DSM or axiomatic design matrices. Additional information, such as attributes, external documents, and models of different kinds, can be linked to the objects in the EF-M model.

Figure 1a also illustrates the modeling of alternative solutions to one FR. The upper right FR is solved by DS<sub>a</sub> or DS<sub>b</sub>, respectively. This represents an either-or connection, meaning that two different variations of the product can be instantiated from this model, so the axiom of independence is not violated. The maturity of DS<sub>a</sub> and DS<sub>b</sub> can differ. At this preliminary stage, the conventional and innovative solutions can be regarded as interchangeable. These alternative solutions define the modular bandwidth of the EF-M model.

The EF-M tree can be separated into different levels, described by Levandowski et al. (2014) as the *static* level, containing the main product functions; the *concrete* level, where functions and solutions close to the embodiment are situated; and the *conceptual* level, where the product is developed into its sub-solutions connecting the former two. The different levels are illustrated in Figure 1b. The different levels correspond to the amount of change that may be applied to design; generating alternative solutions on the conceptual level impacts the entire product structure, whereas changes on the concrete level only influence modules or parts. The static level is only altered when new customer needs are introduced. In models with a lower modeling depth, the conceptual level might be omitted.

The EF-M tree can be encapsulated into *configurable components* (CCs) (Claesson, 2006). These are individually coherent sub-systems, that is, not sharing any sub-elements with other CCs, that provide different interfaces toward neighboring as well as higher- and lower-level CCs. One of the main uses is to



**Fig. 1.** EF-M modeling: (a) modeling elements, adapted from Johannesson and Claesson (2005) and (b) levels of EF-M tree based on Levandowski *et al.* (2014) and encapsulation through CC.

enable a modularization of the product already in the functional domain. A CC can contain other CCs of a lower modeling level and can be placed like a DS in an EF-M tree, providing a set of sub-solutions to the respective FR. Their configuration eases set-based design approaches and platform design through the reuse of components and the individually configurable and combinable elements. Interface (IF) objects capture *iw* connections between different CCs. This encapsulation enables a modularization of the product. The encapsulation of an EF-M tree into CCs is illustrated in Figure 1b with different colored rectangles.

### A glue gun modeling example

Based on the benchmark product “glue gun”, a FM was created to describe the existing product, which was then expanded in its functionality through the introduction of a new customer requirement.

### Functional decomposition of the legacy design

To create the FM of a glue gun in EF-M, the existing glue gun concept is placed under the top-level FR “Provide stream of molten glue” and subsequently split into the FRs “Melt glue stick”, “Guide molten glue onto surface”, “Control gun”, “Feed glue stick”, “Contain parts”, and “Place down glue gun when not in use”. Each FR is then matched to a system found in the actual glue gun as its DS, as illustrated in Figure 2. The design space of the FRs “Melt glue stick”, “Control gun”, and “Feed glue stick” is controlled by the respective constraints “Glue stick material”, “Ergonomics of human hand”, and “Glue stick size”.

In the next steps, further FRs for each DS were established and assigned to the respective design elements of the glue gun. This is done in accordance with the axiom of independence (Suh, 1990), where each FR is fulfilled by only one DS.

When a sufficient level of detail in the modeling is reached, interactions with connections between DS on the lowest level are determined. As an example, in Figure 3, the decomposition of the DS “Thermal/electric element” is illustrated. The entire EF-M tree modeled for this case is shown in Figure 3 but will not be elaborated upon in detail here since it would extend the

length of this paper. Depending on the design situation, the level of detail can be increased in each branch down to the single wire or screw.

The information stored in the model can extend beyond the mere function structure. To enable further analyses and to illustrate the concept’s interactions, DS, FR, and C are adorned with parameters that are related to their function. The parameter relationships are along with the *isb*, *rf*, and *iw* connections. The respective parameters of the “Melt glue stick” DS and its branches are shown in Table 1. To avoid repetition, only the parameters of the leaf elements are listed.

Through encapsulation, the lower levels of the model are accumulated in CCs. However, the cross-branch *iw* connections are still accessible. These result in the *iw* connections shown in Figure 3. The *iw* can indicate a physical IF, such as between the DS “Form fitting in casing” in the CC “Thermal element”, shown in Figure 4 with the CC “Case”. In the case of the *iw* between the DSs “Power cord” and “Electronic control unit”, the *iw* represents not only the physical IF between the power cord and the control unit but also several parameters related to the voltage, frequency, and power consumption. The entire model is shown in Figure 4.

### Exploration of novel design options

Product development is focused on finding new and improved solutions to existing or new problems. Innovative modeling refers to the modeling of new and improved solutions that may be explored based on new or existing user requirements.

New functionality is modeled as FR, new technical requirements as C, and new alternative solutions are modeled as DS (Wahl and Johannesson, 2010) in the existing EF-M model.

To illustrate this, the model of the glue gun is extended with another top-level constraint derived from a customer requirement – that the product shall be portable.

Therefore, the new constraint “Be portable” is introduced to the model. It was placed as a top-level constraint as shown in Figure 5. After an analysis of the existing solution, it can be concluded that the current solution violates this constraint, specifically the solution “Electric household grid”. While the analysis

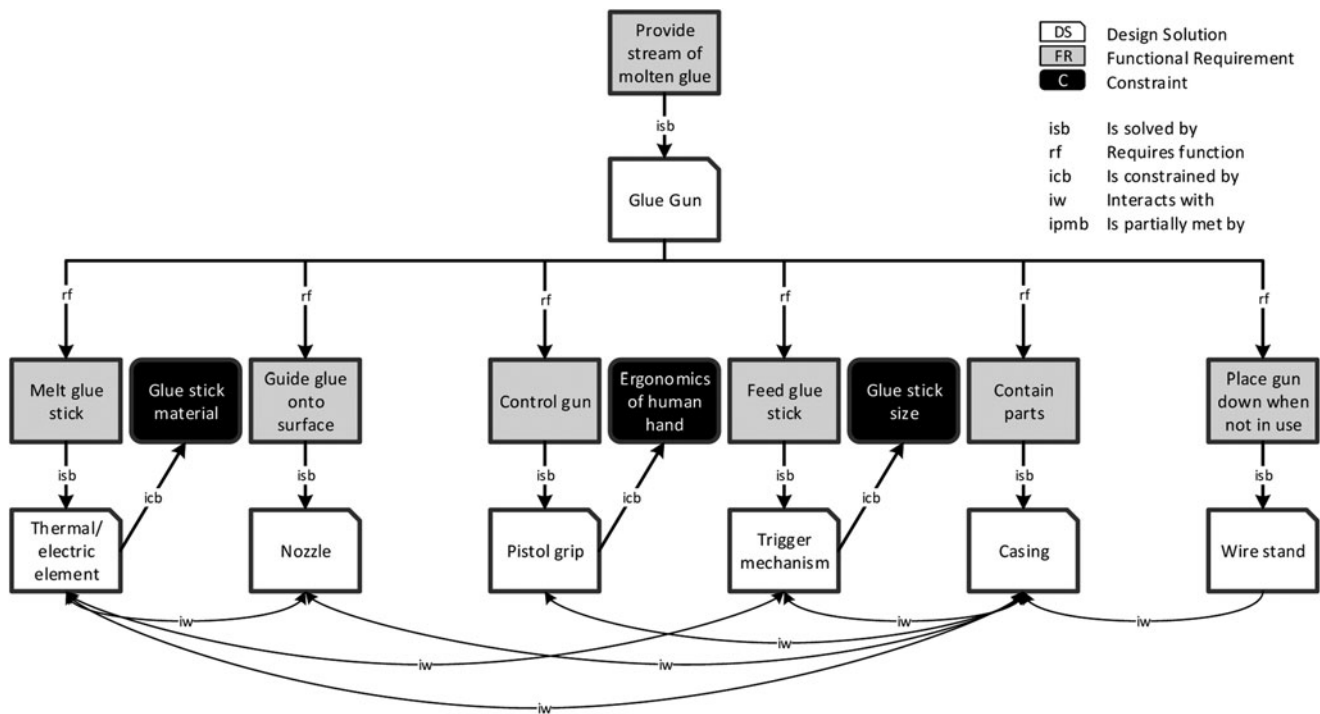


Fig. 2. Initial functional segmentation of the glue gun.

for constraint fulfillment required an embodiment of the concept, that is tracing the cable which restricts portability, the EF-M model enables the capturing of the constraint violation. The hierarchical design rationale (DR) allows for tracing to which DSs are violating the constraint and therefore require redesign.

As a new solution, a battery-based power source is introduced. The EF-M model enables the representation of the alternative solution next to the legacy design. All new DSs and their subsequently necessary FRs are captured in the EF-M model. The new DS sparks new FRs, which are illustrated in Figure 5 together with their respective solutions. These FRs differ from the ones observed in the reverse-engineered model; however, they fulfill the same top-level function, taking into consideration the new constraints. The sub-functions have at this point of modeling multiple sub-solutions, for example, different battery solutions for energy storage.

By using the encapsulation of the CC modeling approach, the new solution can be modeled individually inside the existing model, as can be seen in the lower part of Figure 4. This allows for a clear identification of different solutions. Furthermore, the CC can be defined with clear interfaces toward other modules and potentially be reused in other projects.

Each of the sub-functions in the CC “Battery” has multiple solutions; therefore, the CC can be instantiated into multiple alternative concepts. In a first instantiation, a full combinatorial of the sub-solutions provides  $\sum DS_{FR(1)} * \sum DS_{FR(2)} * \dots * \sum DS_{FR(n)}$ , that is,  $2*2*2*2=16$  concepts. All concepts are presented in Table 2.

While this leads to an explosion in the number of potential concepts – 16 new concepts only for 1 new FR – the constraints and relations captured in the model already enable the first screening for feasible solution – combinations, that is, concepts. The concepts are evaluated for compliance with the constraints represented in the model. The evaluation is preferably run via

parameters stored in the respective modeling elements, such as shown in Table 2, but in some cases requires expert assessment. The compliance of all 16 concepts of the CC battery is shown in Table 2, based on the four constraints shown in Figure 5.

As a result of this screening, four different concepts remain for selection and further development. In the redesign process for the entire glue gun, a higher number of new solutions and sub-solutions have been identified and captured. The entire model, with all sub-solutions of all branches, yields 56 different design concepts for the glue gun.

### Analysis and selection for the embodiment

A major strength of the modeling of interactions and parameters is the availability of concept analysis already in the pre-embodiment product development phase. This analysis allows for an informed decision as to which concepts are to be pursued further that is realized as a geometry model. As one example of systemic analysis, the export of DSM and the resulting benefit are explained here. In total, three analyses are performed to compare and filter the 56 different concepts: concept modularity as shown by Levandowski *et al.* (2016), lowest technological readiness level (TRL) of a DS and preliminary mass calculation. Based on the evaluation of these analyses, one final concept is chosen for embodiment. This process is illustrated in Figure 6.

For the modularity analysis, the directional iw connections between the leaf DSs are exported in a square matrix, where each DS is represented in a column and a row, and rows and columns are sorted in the same order. For each iw, the row of the outgoing DS is marked in the column of the incoming DS. This, of course, leaves the diagonal blank since here the same DSs meet. The process is illustrated in Figure 7. If the modeling approach includes weighted or categorized (e.g., spatial, energy, material, and information flow) data, this information can be

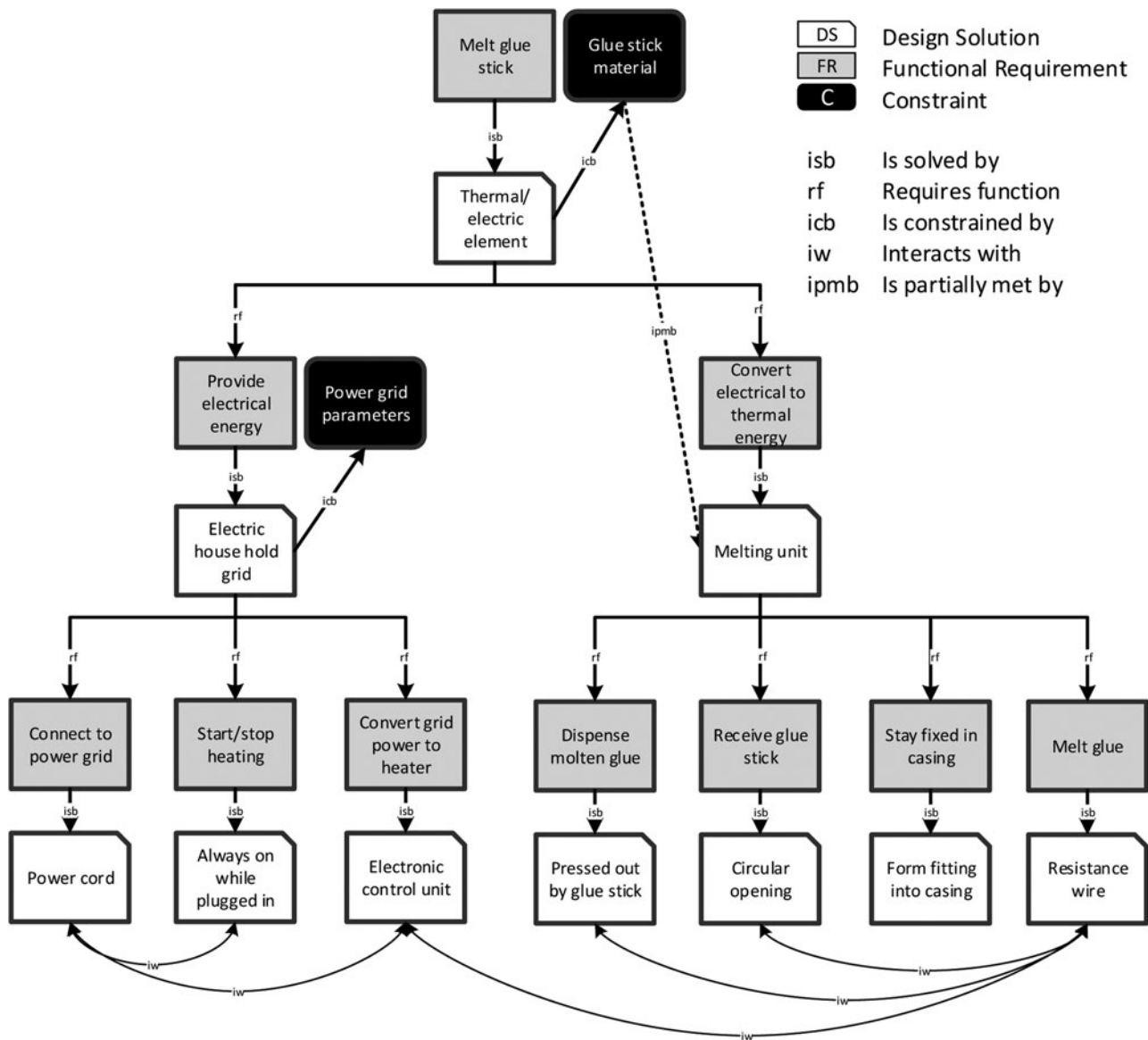


Fig. 3. Function decomposition of DS “Thermal/electric element”.

transported to the DSM as well. Using appropriate clustering algorithms, such as the Idicula–Gutierrez–Thebeau algorithm (IGTA) (Thebeau, 2001), the DS can be sorted into modules with a minimal level of external interaction. Also, the complexity of the interfaces between the modules can be seen in the respective intersections in the re-sorted DSM. Repeated application of the clustering algorithm allows for multilevel modularization.

For all concepts, DSMs have been created and clustered using IGTA implemented in the Cambridge Advanced Modeler<sup>1</sup> tool. Clustering was performed with all nonaltered modules encapsulated to highlight the differences in the designs. Following the analysis for modularization as suggested by Levandowski *et al.* (2016), internal and external complexity of the modules has been computed for comparison as follows:

$$c_{\text{int}} = \frac{x_{\text{iw}}}{n^2 - n} \quad (1)$$

<sup>1</sup>See <https://www-edc.eng.cam.ac.uk/cam/>.

where  $x_{\text{iw}}$  is the number of iw connections per module and  $n$  is the number of elements per modules.

The TRL of each DS is also captured in the EF-M model. TRL refers to maturity if the technology used in the DS, as described by Mankins (1995). Technology readiness levels range from TRL1 “Basic principles observed and reported” to TRL9 “Actual system ‘flight proven’ through successful mission operations”, that is, the solution has been applied and tested in real production and use conditions. From this, the lowest TRL of each DS is determined in order to highlight under-developed designs, such as DC13 in Table 3. The selection of designs to be developed further can then be based on the expected effort of development.

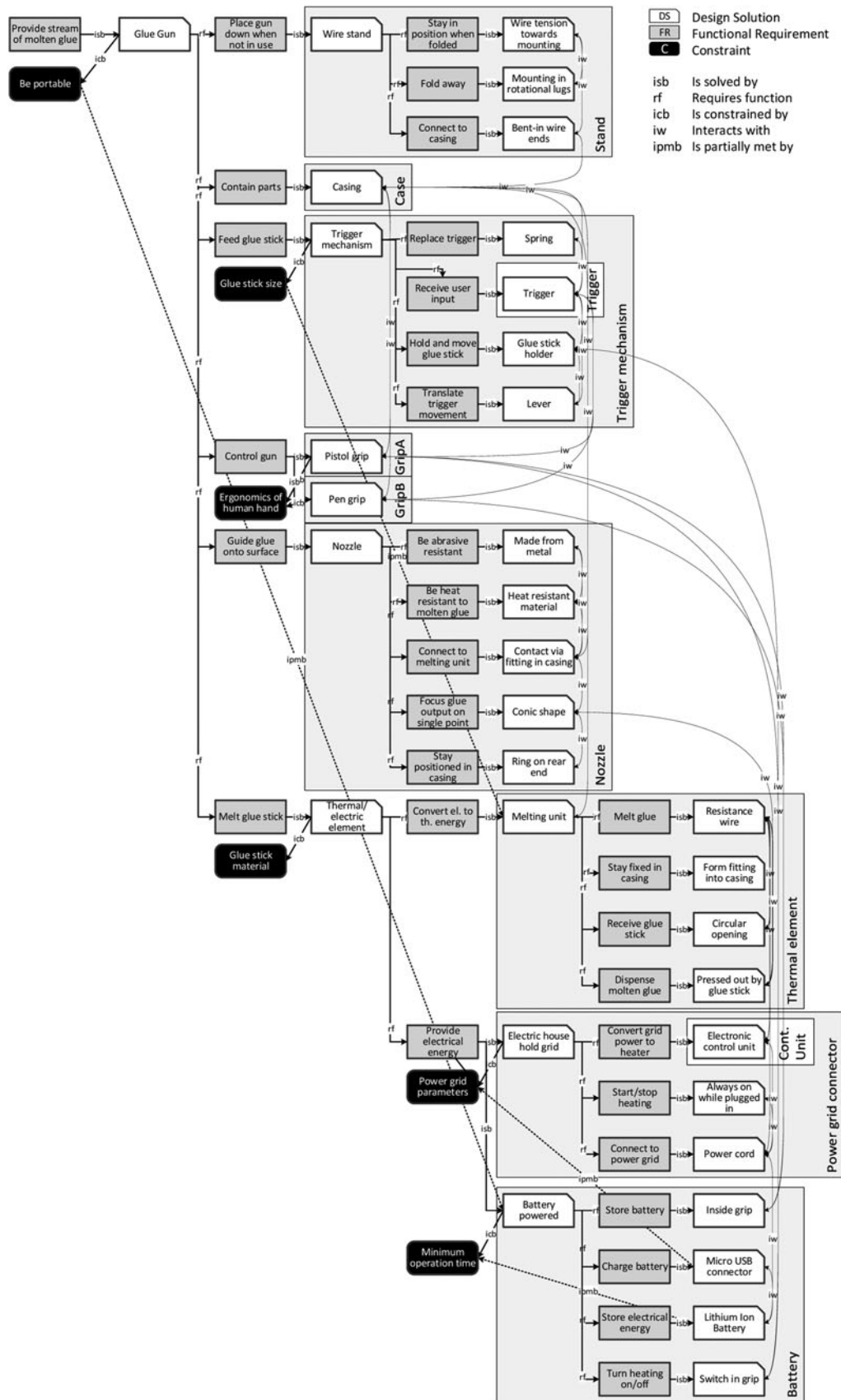
For a handheld product, the critical property “Product mass” is captured in the comparison chart as well. The mass of each design can be computed from the tree structure of the EF-M by summing up the respective values of all individual DS. The weight assessment of each DS is can be facilitated in different ways. One way is by measuring the actual embodiment of said DS if available,

**Table 1.** Parameters of “Melt glue stick”

Name	Relation	Value	Unit
<b>FR: Melt glue stick</b>			
Material		Polyethylene	
Mass per second		2	g/s
Diameter	= <i>Glue stick size</i> :Diameter	8	mm
<b>C: Glue stick material</b>			
Name	= <i>Melt glue stick</i> :Material	Polyethylene	
Melting temperature		150	°C
Specific heat of fusion		293	W/g
<b>C: Power grid parameters</b>			
Voltage		220	V
Standard		Schuko	
Fuse		16	A
<b>DS: Electric household grid</b>			
Socket	= <i>Power grid parameters</i> :Standard	CEE 7/3	
TRL		9	
<b>FR: Provide electrical energy</b>			
Power	= <i>Resistance wire</i> :Electrical power	156.8	W
Voltage	= <i>Power grid parameters</i> :Voltage	220	V
Current	= <i>Power</i> /Voltage	0.713	A
<b>DS: Resistance wire</b>			
Thermal power (out)	= <i>Glue stick material</i> :Specific heat of fusion/ <i>Melt glue stick</i> :Mass per second	146.5	W
Internal losses		7	%
Electrical power (in)	= Thermal power * (1 + Internal losses)	156.8	W
Voltage		12	V
TRL	<i>From existing design</i>	9	
<b>DS: Electronic control unit</b>			
Conversion rate	= <i>Power grid parameters</i> :Voltage/ <i>Resistance wire</i> :Voltage	18.33	
Max current	= $\text{rnd}(\text{Resistance wire:Current} * 2)$	2	A
<b>DS: Circular opening</b>			
Diameter	= <i>Melt glue stick</i> :Diameter	8	mm
TRL	<i>From existing design</i>	9	
Mass		0	kg
<b>DS: Power cord</b>			
Plug	= <i>Power grid parameters</i> :Standard	CEE 7/4	
Length	= <i>Customer Requirement</i> :Minimum reach	1.5	M
TRL	<i>From existing design</i>	9	
Mass		0.09	kg

as is possible in DC1. Otherwise, the weight can be estimated by experts or in a preliminary computation based on the available product data as is shown in Table 4 for the battery weight based on required energy and the chosen battery technology's energy density. While “Product mass” is an important criterium not only for handheld products but even more so in the aerospace and automotive industry, it is merely an example for a

summarized product parameter. Other examples could be energy consumption, volumes, or usage of specific materials – depending on the parameters stored in the respective DS of the model, as shown in Tables 1 and 4. Other mathematical operations as such as average, lowest or highest are also possible alternatives instead of mere summarization. As Table 4 shows, the different parameters may have any kind of relation to each other.



**Fig. 4.** EF-M tree of the glue gun to illustrate most of the model and its interactions. The CC “Case”, “Grip”, and other sub-CC are not fully illustrated due to spacing reasons. CCs are shown in a gray field.

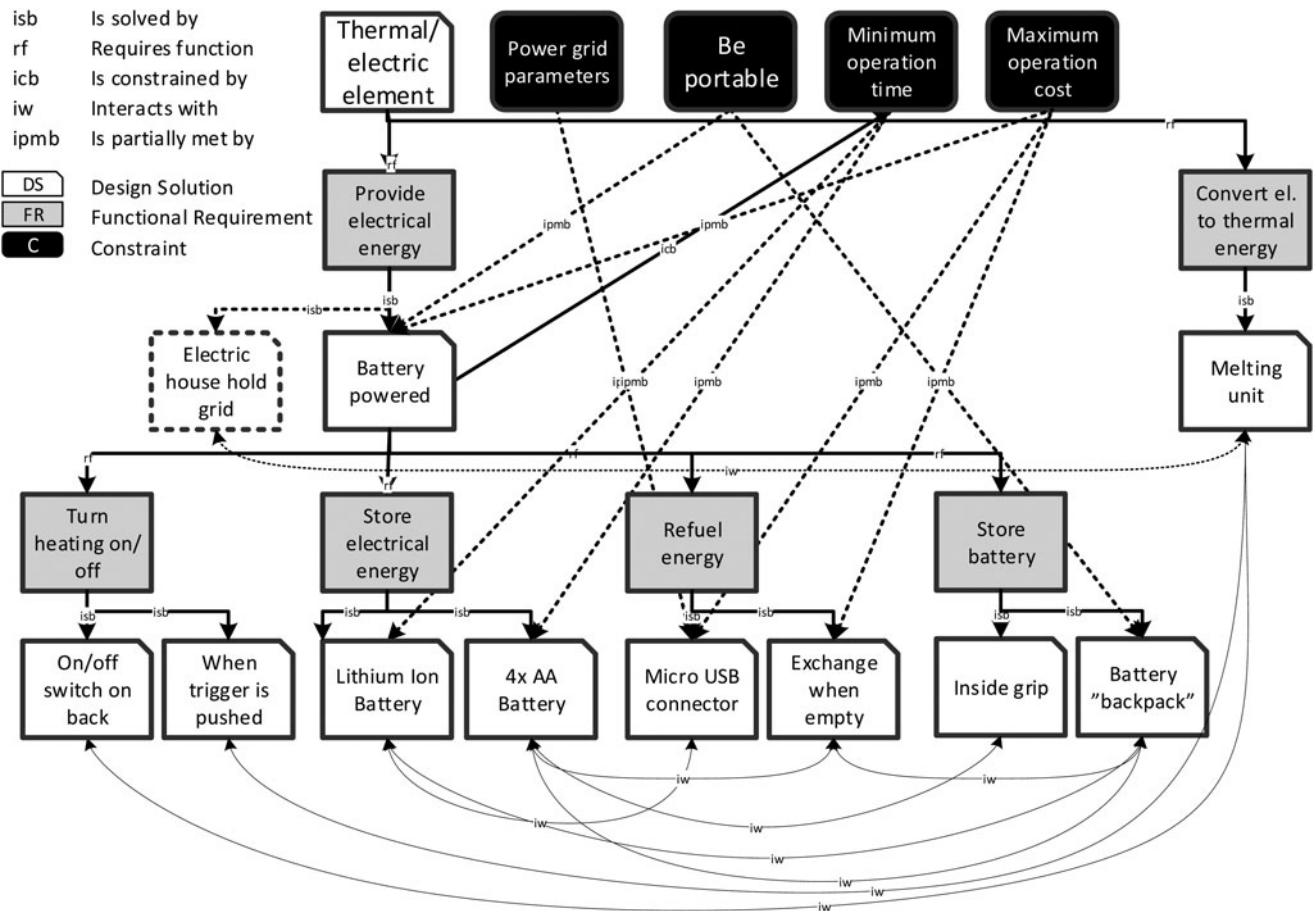


Fig. 5. Alternative design solution for “provide electrical energy”. Multiple alternatives for all FR are shown, as well as the constraining C.

Through the capture of these relations in the EF-M modeo, any of the 56 instantiated concepts’ parameters can be calculated automatically.

Further analyses, such as assessments of product complexity (Raja *et al.*, 2019) or manufacturability (Landahl *et al.*, 2015), can be performed on the data set that is provided through the EF-M model. To be able to evaluate these properties appropriately, the respective stakeholders’ needs must be considered, for example, through a value analysis. However, the approach shown here does not model stakeholders or their needs; hence, no value analysis has been performed.

In most cases, more detailed analyses are required to evaluate further product properties and how well the specific DSs actually fulfill the FRs they are assigned to. These analyses are commonly based on simulations of a geometry model in either CAD or using the finite element method (FEM).

## Discussion

To explore potential solutions in a design space, it is necessary to model the boundaries, generate designs, and analyse them. The use of EF-M for design space exploration (DSE) enables all three of these steps – the description of boundaries through C and FR, the population of the design space with a multitude of novel solutions, and a consecutive first-order analysis of both the novel and legacy designs. All three steps have been presented in the glue gun design case presented above.

## Function modeling for DSE

Figure 7 illustrates the method in a model of how the function modeling approach supports the exploration of a wider design space than a CAD modeling approach would be able to. For an easier understanding of how the phases are associated with the glue gun example, Figure 7 uses the same color scheme as Figure 6.

Figure 7a shows on the x-axis from the center outwards the level of information available of the design under investigation. The legacy design which is to be improved upon is represented on the left-hand side and the new design on the right. Process 1 describes the functional decomposition, which converts the knowledge from the available geometry into the FM. Not all geometrical product knowledge, which resides in the graph in the lower half, can be captured by the FM. However, through the process of functional decomposition, systemic product knowledge is captured which may not be found in the geometry model. This is illustrated in the blue area representing the FM, also covering an area above the x-axis. Process 2 shows the innovative process, in which a new product concept is developed. The FM is expanded in the direction of the new design. This process is described in “Exploration of novel design options” of this publication. Process 3, embodiment, is required to progress with product development. This builds on the knowledge in the FM and expands the model of the new concept into the geometric domain, illustrated by the right-hand orange quarter-circle. However, while this step has not been described in this publication, its

**Table 2.** Concepts for CC “Battery” and constraint evaluation

Turn heating on/off	Store electrical energy	Refuel energy	Store battery	Maximum operation cost	Minimum operation time	Power grid parameters	Be portable	Feasibility
On/off switch on back	Lithium-Ion Battery	Micro USB connector	Inside grip	1	1	1	1	1
On/off switch on back	Lithium-Ion Battery	Micro USB connector	Battery “backpack”	1	1	1	0	0
On/off switch on back	Lithium-Ion Battery	Exchange when empty	Inside grip	0	1	x	1	0
On/off switch on back	Lithium-Ion Battery	Exchange when empty	Battery “backpack”	0	1	x	0	0
On/off switch on back	4x AA Battery	Micro USB connector	Inside grip	1	1	0	1	0
On/off switch on back	4x AA Battery	Micro USB connector	Battery “backpack”	1	1	0	1	0
On/off switch on back	4x AA Battery	Exchange when empty	Inside grip	1	1	x	0	0
On/off switch on back	4x AA Battery	Exchange when empty	Battery “backpack”	1	1	x	1	1
When trigger is pushed	Lithium-Ion Battery	Micro USB connector	Inside grip	1	1	1	1	1
When trigger is pushed	Lithium-Ion Battery	Micro USB connector	Battery “backpack”	1	1	1	0	0
When trigger is pushed	Lithium-Ion Battery	Exchange when empty	Inside grip	0	1	x	1	0
When trigger is pushed	Lithium-Ion Battery	Exchange when empty	Battery “backpack”	0	1	x	0	0
When trigger is pushed	4x AA Battery	Micro USB connector	Inside grip	1	1	0	1	0
When trigger is pushed	4x AA Battery	Micro USB connector	Battery “backpack”	1	1	0	1	0
When trigger is pushed	4x AA Battery	Exchange when empty	Inside grip	1	1	x	0	0
When trigger is pushed	4x AA Battery	Exchange when empty	Battery “backpack”	1	1	x	1	1

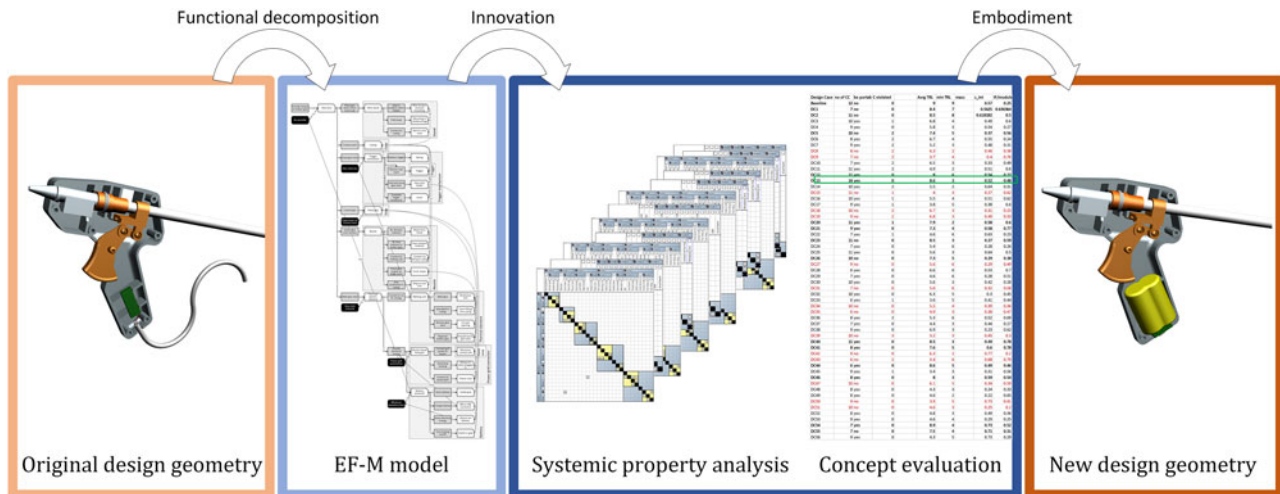
importance is highlighted. The co-evolution of two models of different domains is consistent with the findings of Woodbury and Burrow (2006), who state that the CAD model alone is not a sufficient basis for design space exploration due to its limited information content.

Figure 7b shows the same graph in a top view, with Figure 7a being a section through A–C. The outer circle borders the design space, where A, B, C, and D symbolize conceptually different design directions, with A being the legacy design. In this design space, the legacy design CAD model covers the solid orange line (1) on the left-hand side. The slice around the line illustrates the easily possible variations, which are available through the CAD model with methods such as proposed by, for example, Sandberg *et al.* (2011). The solid blue slice (2) is the decomposed FM, which is then expanded through innovation into a FM covering a larger part of the design space (3), at a much lower cost than the same radial coverage would require using a CAD model. This makes use of the high flexibility and model viscosity, as defined by Green and Petre (1996), of EF-M. Certain concepts that show their potential through the first-order analyses based on the FM, as shown in “Analysis and selection for the embodiment”,

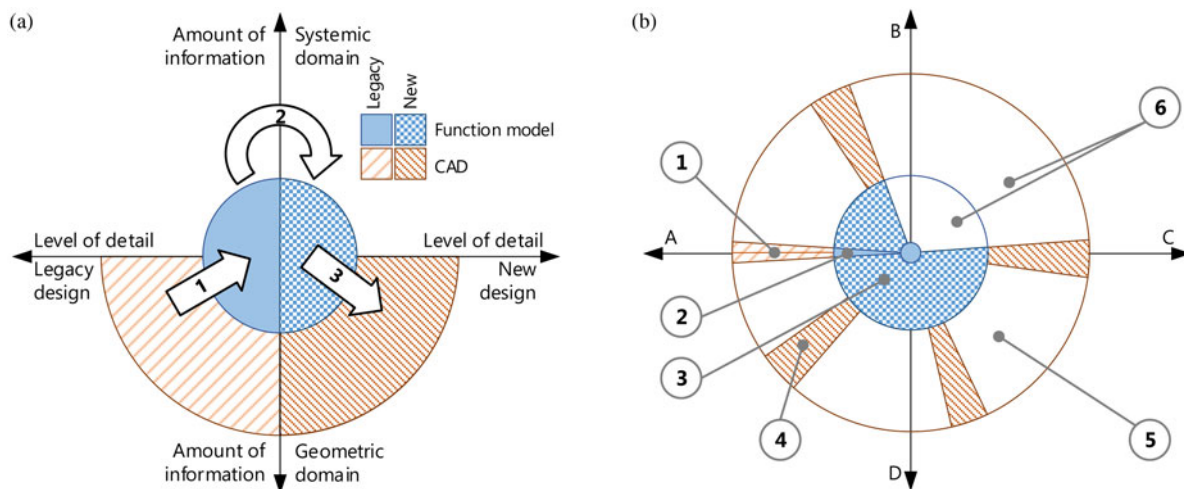
can be developed further into CAD models, covering the outer, that is further developed part of the design space (4). Some regions of the design space stay unexplored due to being dismissed based on the FM (5), but also because it is simply impossible to cover all possible variants and variations (6) (Woodbury and Burrow, 2006).

Beyond the ability to describe and populate the design space, the approach presented here also allows for first-order analysis of the systemic properties. The captured interactions provide the basis for, for example, analysis of modularity as shown by Levandowski *et al.* (2016) and in “Analysis and selection for the embodiment” of this publication. Similar to the approach by Eisenbart *et al.* (2015), DSMs are used for an analysis of the concept, as is shown in Figure 8. Beyond this, it is possible to store the information from different data sources, such as legacy models, simulations, or engineering experience, as shown in Table 1. Thereby, the capturing of solutions in EF-M contributes to solve the challenge of capturing and reusing tacit knowledge as discussed by Wang *et al.* (2018).

FM are not commonly used in design space exploration (Eichhoff and Roller, 2015), and therefore a holistic approach



**Fig. 6.** Visualization of the concept evaluation process; EF-M model containing all variants, DSM derived from the EF-M model, table of 56 concepts and evaluation criteria with the baseline highlighted in blue and the chosen concept in green, renderings of baseline and chosen concept.



**Fig. 7.** Design space exploration process using FMs as an intermediate step. (a) Illustrates the steps (1) functional decomposition, (2) innovation, and (3) embodiment to get from legacy to novel design. (b) Provides a top view of the same graph, showing the design space (5) and how it can be explored using function (2, 3) and geometry (1, 4) models.

toward the discovery and analysis of novel designs also requires the use of product geometry models in this approach.

### EF-M modeling

When modeling, it is assumed that each DS is a 100% solution to its respective FR, as long as no constraints are violated. This leaves an information gap when assessing the quality of a DS when having to select a concept for further development. One approach would be to equip each DS with a parameter quantifying the fitness of the solution, which can be computed by, for example, function fit analysis (Holmes, 2000). This is a point which needs to be investigated further. So far, the quality of a solution in terms of fulfilling the requirements requires the analysis of further product models, for example, in the form of CAD.

EF-M modeling can be criticized that it is possible to generate different representations of the same product (Raja and Isaksson, 2015). An example of this can be constructed from the initial

functional segmentation in Figure 2. The model could also be segmented into the FRs “Melt glue stick”, “Guide glue stick”, “Control flow”, and “Place gun down when not in use”, where “Guide glue stick” contains DSs and FRs about the mechanism, nozzle, and feeding, and “Control flow” encompasses the DSs and FRs related to handling, trigger input, and flow characteristics. This change in segmentation propagates to the lower levels and has an impact on the concrete level and the iw, which are the foundation of the subsequent analyses. However, the modeling approach still serves the purpose of supporting design space exploration.

Another weakness of the modeling approach is its subjectivity since there exist virtually no guidelines for what a “good” functional decomposition is, and beyond that, how to express a novel technical solution. However, this subjectivity of function modeling, in general, has already been observed by, for example, Eckert *et al.* (2012). No expedient solution to this challenge has been found yet (Erden *et al.*, 2008).

**Table 3.** Excerpt from the evaluation table of alternative glue gun designs

Design case	No. of CC	Be portable	...	Lowest TRL	Mass	c_int	IF/module
Baseline	12	No		9	0.42	0.57	0.25
DC1	7	No		7	0.42	0.56	0.63
DC2	11	No		8	0.5	0.61	0.5
...	...	...		...	...	...	...
DC12	11	Yes		6	0.62	0.54	0.27
DC13	14	Yes		3	N/A	0.52	0.48
...	...	...		...	...	...	...

**Table 4.** Parameters of DS “Battery powered”

Name	Relation	Value	Unit
<b>C: Minimum operation time</b>			
Operation time		20	min
<b>FR: Store electrical energy</b>			
Capacity	= Minimum operation time:Operation time * Provide electrical energy:Power	48.8	Wh
<b>DS: Lithium-Ion Battery</b>			
TRL		7	
Voltage		18	V
Capacity	= Store electrical energy:Capacity * 1.2	58.6	Wh
Energy density (mass)		243	Wh/kg
Energy density (volume)		693	Wh/l
<b>FR: Store battery</b>			
Battery size	= Lithium-Ion Battery:Capacity/Lithium-Ion Battery:Energy density (volume)	0.08	l
Battery mass	= Lithium-Ion Battery:Capacity/Lithium-Ion Battery:Energy density (mass)	0.24	kg
<b>DS: Inside grip</b>			
TRL		6	
Provided volume	≥Store battery:Battery size	10 × 4 × 2.5	cm

### Other approaches

Function modeling is arguably not a novel concept to be applied for design space exploration. However, it is still rarely applied in industry. By pushing for a methodical connection between the teleological and the geometric domain of product models, this approach aims at making DSE faster, wider, and more efficient by making FM industrially applicable.

To present the steps taken into this direction, this section presents a comparison with selected FM design approaches in Table 5. The selected criteria are based on the problem statement in “Introduction” of this publication.

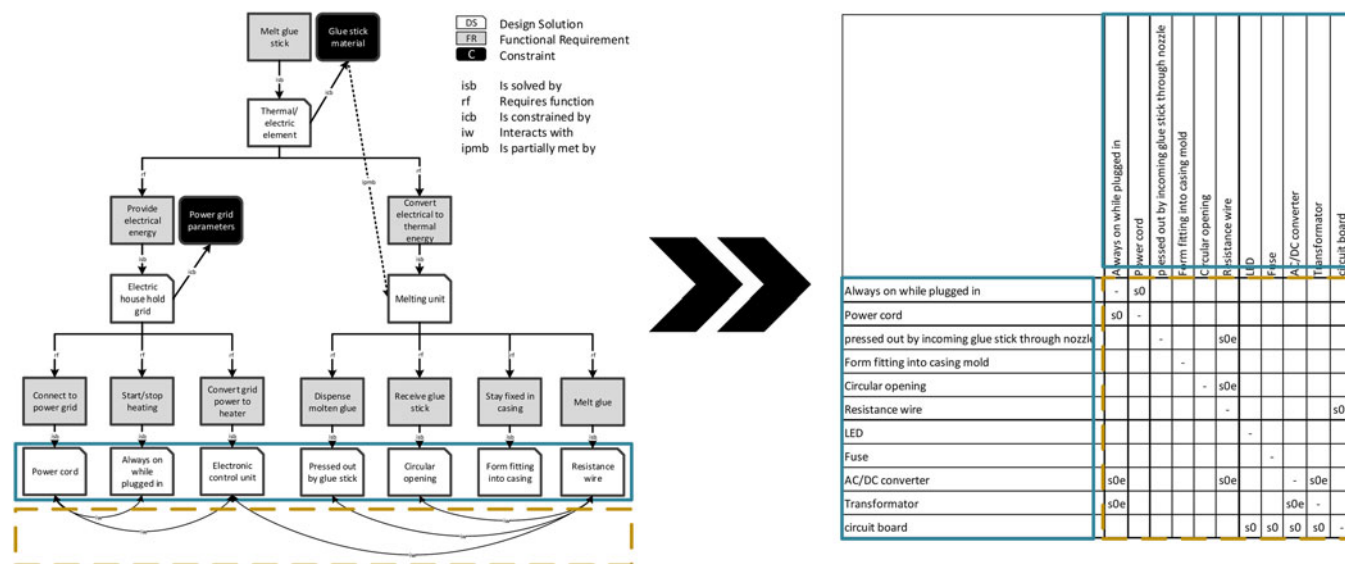
The IFM as presented by Eisenbart *et al.* (2013, 2015) framework offers a multi-view teleological product representation. The representation aims at enabling multiple systemic analyses such as via DSM. However, the framework focuses on the detailed representation of a single concept, therefore not supporting design space exploration.

The DACM as presented by Mokhtarian *et al.* (2017) aims to support “incremental innovation”. The approach is based on bond graphs and intricate variable mapping with the result to

improve an existing design through physics-based analysis enabled in early phases of engineering development. The method appears to be quite refined; however, it does not propose a wider assessment of multiple, alternative solutions covering a wide area of the design space.

The hierarchical coevolutionary design (HiCED) design approach by Jin and Li (2007) is a genetic algorithm-based design space exploration method applying the zig-zagging of Suh’s (1990) design process. While it aims to automatically generate novel concepts, the process neither builds upon an existing geometry nor does it provide a connection to a subsequent embodiment and analysis process.

Function modeling for DSE approaches other than the one presented in this publication, such as exemplarily described above, may show advantages over EF-M in points such as automation, representation of flows, or use-cases. However, the presented approach is outstanding in combining a consistent capture of product information and DR while maintaining a connection to the geometric model, which has been stated as highly important in product development (Roozenburg and Eekels, 1995; Suh, 1990; Tomiyama *et al.*, 2013). While this



**Fig. 8.** Extraction of the DSM matrix based on iw relations on the example of the CC “Thermal/electric element”. The EF-M tree is not displayed in its entirety due to spacing reasons.

**Table 5.** Comparison of FM methods for DSE

	IFM	DACM	HiCED	EF-M for DSE
	Eisenbart et al. (2015)	Mokhtarian et al. (2017)	Jin and Li (2007)	
Scope	System analysis	Favor incremental innovation	Concept generation	Design space exploration
Design space description	–	Implicitly through functional decomposition	Implicitly through functions	Constraints and functions
Representation of design space population	Various design matrices	Bond-graph	Function to means matching with algorithmic support	F-M tree with alternatives
Analysis of alternative concepts	Function analysis	Physics-based reasoning	Fitness function	Systemic analysis
Expanding existing product concepts	Greenfield	Build onto existing FM	Greenfield	Decomposition of existing product
Exploring multiple alternative designs	Only representing one concept	Only representing one concept	Multiple concepts	Multiple sub-solutions
Combinatorial sets of sub-solutions	–	–	Genetic algorithm generating alternatives	Combinatorial combination with constraint evaluation

connection between the modeling domains has not been formulated on a detailed level and are therefore subject to future research, the presented approach promises support for a multi-domain DSE approach.

Furthermore, it may be possible to extent EF-M with features from other modeling approaches, combine different methods, or potentially substitute the function modeling method in the presented approach entirely, if the requirements stated in Table 5 are still given.

## Conclusion

In this paper, an approach to design space exploration that enables the integration of both radical and conventional solutions in the same model is presented. This enables the comparative assessment of a baseline design with a set of novel and innovative

solutions. This is in line with industrial practice, in which novel designs that inherit large portions of existing designs need to be compared with the existing designs.

The proposed design space exploration approach using EF-M has addressed several key problems for DSE. The definition of the design space is facilitated through the use of constraints and requirements. The design space is populated with novel solutions based on their functional contributions, all building on the original product structure. Lastly, the approach enables the comparison of these different designs through a first-order analysis based on systemic qualities captured in the EF-M model. Furthermore, the approach builds onto existing product models, either CAD or FM representations, allows for the introduction of novel solutions on any concept level, and supports the combinatorial generation of new concepts from these, while assessing them constraints violation.

The proposed approach has been placed into perspective through the suggestion of a design space exploration method which connects the function and geometric modeling domains. The method places the FM as the centerpiece of the exploration process, making use of the high modeling viscosity and systemic model information to explore new solutions. This formalization of employing a FM enables a wider exploration of the design space as compared with, for example, parameterized CAD models. The presented approach separates itself from existing FM for DSE methods in the way how it enables the capture of an existing solution, the extension of this concept with novel solutions on any level, the combination and selection of these and their subsequent analysis. However, the final process of this approach, namely the embodiment of the novel solutions into a geometric model, requires further research. So far, this process still requires the manual work of design engineers to connect different modeling domains. Research toward a robust embodiment method and its automation is ongoing, aiming to close the gap between academic development and industrial application of FMs as reported by Tomiyama et al. (2013).

**Acknowledgments.** This work was carried out at the Wingquist Laboratory VINN Excellence Centre within the Area of Advance – Production at the Chalmers University of Technology, Sweden. The research is supported by the Swedish Governmental Agency for Innovation Systems (VINNOVA) through the NFFP6 program in the VITUM project, grant number 2014-00911. The support is gratefully acknowledged.

## References

- Albers A and Sadowski E (2014) The Contact and Channel Approach (C&C<sup>2</sup>-A): relating a system's physical structure to its functionality. In Chakrabarti A and Blessing LTM (eds), *An Anthology of Theories and Models of Design*. London: Springer. doi:10.1007/978-1-4471-6338-1\_8.
- Andreasen MM (1980) *Syntesemetoder på Systemgrundlag - Bidrag til en konstruktionsteori*. (PhD Thesis), Lund University.
- Borgue O, Müller JR, Panarotto M and Isaksson O (2018) Function modeling and constraints replacement for additive manufacturing in satellite component design. *Proceedings of NordDesign*, 14–17 August, Linköping, Sweden.
- Claesson A (2006) *A Configurable Component Framework Supporting Platform-based Product Development* (PhD thesis). Doktorsavhandlingar vid Chalmers Tekniska Högskola, Department of Product and Production Development, Chalmers University of Technology, Gothenburg.
- Eckert CM, Ruckpaul A, Alink T and Albers A (2012) Variations in functional decomposition for an existing product: experimental results. *Artificial Intelligence for Engineering Design, Analysis and Manufacturing: AIEDAM* 26, 107–128.
- Eckert CM, Albers A, Bursac N, Chen HX, Clarkson PJ, Gericke K, Gladysz B, Maier JF, Rachenkova G, Shapiro D and Wynn D (2015) Integrated product and process models: towards an integrated framework and review. *Proceedings of the 20th International Conference on Engineering Design (ICED 15)*, 1 July, Politecnico di Milano, Italy, pp. 1–10.
- Eichhoff JR and Roller D (2015) A survey on automating configuration and parameterization in evolutionary design exploration. *Artificial Intelligence for Engineering Design, Analysis and Manufacturing: AIEDAM* 29, 333–350.
- Eisenbart B, Qureshi AJ, Gericke K and Blessing L (2013) Integrating Different Function Modelling Perspectives. In Chakrabarti A and Prakash RV (eds), *ICoRD'13 Global Product Development*. India: Springer, pp. 85–97. doi:10.1007/978-81-322-1050-4\_7.
- Eisenbart B, Gericke K and Blessing L (2015) DSM for modeling and analyzing functionality: views of practitioners. *Modeling and Managing Complex Systems – Proceedings of the 17th International DSM Conference*, November. doi:10.3139/9783446447264.016.
- Erden MS, Komoto H, Van Beek TJ, D'Amelio V, Echavarría E and Tomiyama T (2008) A review of function modeling: approaches and applications. *Artificial Intelligence for Engineering Design, Analysis and Manufacturing: AIEDAM* 22, 147–169.
- Gedell S and Johannesson H (2013) Design rationale and system description aspects in product platform design: focusing reuse in the design lifecycle phase. *Concurrent Engineering Research and Applications* 21, 39–53.
- Gericke K and Eisenbart B (2017) The integrated function modeling framework and its relation to function structures. *Artificial Intelligence for Engineering Design Analysis and Manufacturing: AIEDAM* 31, 436–457.
- Gero JS (1990) Design prototypes: a knowledge representation schema for design. *AI Magazine* 11, 26.
- Gero JS and Kannengiesser U (2004) The situated function-behaviour-structure framework. *Design Studies* 25, 373–391.
- Green TRG and Petre M (1996) Usability analysis of visual programming environments: a “cognitive dimensions” framework. *Journal of Visual Languages and Computing* 7, 131–174.
- Heikkinen T, Johansson J and Elgh F (2018) Review of CAD-model capabilities and restrictions for multidisciplinary use. *Computer-Aided Design and Applications* 4360, 1–11.
- Helms B and Shea K (2012) Computational synthesis of product architectures based on object-oriented graph grammars. *Journal of Mechanical Design* 134, 021008.
- Henderson RM and Clark KB (1990) Architectural innovation: the reconfiguration of existing product technologies and the failure of established firms. *Administrative Science Quarterly* 35, 9.
- Hirtz J, Stone RB, McAdams DA, Szykman S and Wood KL (2002) A functional basis for engineering design: reconciling and evolving previous efforts. *Research in Engineering Design* 13, 65–82.
- Holmes L (2000) Evaluating COTS using function fit analysis. *The Journal of Defense Software Engineering* 13(2), 26–30.
- Hubka V and Eder WE (1988) *Theory of Technical Systems*. Springer Verlag. doi:10.1007/978-3-642-52121-8.
- Isaksson O, Bertoni A, Levandowski CE, Müller JR, Wiklund D and Johannesson H (2016) Virtual contextual validation of technologies and methods for product development. *Proceedings of International Design Conference, DESIGN, Vol. DS 84*, 16–19 May, Dubrovnik, Croatia, pp. 669–678.
- Jin Y and Li W (2007) Design concept generation: a hierarchical coevolutionary approach. *Journal of Mechanical Design* 129, 1012.
- Johannesson H and Claesson A (2005) Systematic product platform design: a combined function-means and parametric modeling approach. *Journal of Engineering Design* 16, 25–43.
- Landahl J, Raudberget D and Johannesson H (2015) Assessing system maturity of interacting product and manufacturing alternatives before early technology commitment. *I24th International Association for Management of Technology Conference: Technology, Innovation and Management for Sustainable Growth, IAMOT 2015*, The Westin Cape Town, South Africa, 8 June 2015 through 11 June 2015.
- Lawson B and Samson D (2001) Developing innovation capability in organisations: a dynamic capabilities approach. *International Journal of Innovation Management* 5, 377–400.
- Levandowski CE, Raudberget D and Johannesson H (2014) Set-based concurrent engineering for early phases in platform development. In Jianzhong Cha, Shuo-Yan Chou, Josip Stjepandić, Richard Curran and Wensheng Xu (eds), *Moving Integrated Product Development to Service Clouds in the Global Economy – Proceedings of the 21st ISPE Inc. International Conference on Concurrent Engineering, CE 2014*, pp. 564–576.
- Levandowski CE, Müller JR and Isaksson O (2016) Modularization in concept development using functional modeling. *2016 ISPE International Conference on Transdisciplinary Engineering*, Vol. 4. doi:10.3233/978-1-61499-703-0-117.
- Lindemann U (2007) *Methodische Entwicklung technischer Produkte*. Berlin: Springer.
- Malmqvist J (1997) Improved function-means trees by inclusion of design history information. *Journal of Engineering Design* 8, 107–117.
- Mankins JC (1995) Technology Readiness Levels. *White Paper*, April 6, p. 5.
- Mokhtarian H, Coatanéa E and Paris H (2017) Function modeling combined with physics-based reasoning for assessing design options and supporting innovative ideation. *Artificial Intelligence for Engineering Design, Analysis*

- and Manufacturing (AIEDAM), 31(4 (Function Modeling: Benchmark Models, Problems, and Approaches)). doi:10.1017/S0890060417000403.
- Pahl G, Beitz W, Feldhusen J and Grote KH** (2003) *Konstruktionslehre: Grundlagen erfolgreicher Produktentwicklung. Methoden und Anwendung*. Chemistry, Springer-Verlag. doi:10.1007/978-1-84628-319-2.
- Pimmler TU and Eppinger SD** (1994) Integration analysis of product decompositions. *ASME Design Theory and Methodology Conference*, September, Minneapolis.
- Prasad B** (2006) Best Practices in KBE Document Edited by: COE / DPC-KBE Task Force. Best Practices in KBE Sponsored by: COE / DPC 2005 KBE Committee, pp. 1–78.
- Raja V and Isaksson O** (2015) Generic functional decomposition of an integrated jet engine mechanical sub system using a configurable component approach. In Curran R, Wognum N, Borsato M, Stjepandić J and Verhagen WJC (eds), *Transdisciplinary Lifecycle Analysis of Systems Proceedings of the 22nd ISPE Inc. International Conference on Concurrent Engineering*, July 20–23, 2015, pp. 337–346.
- Raja V, Kokkolaras M and Isaksson O** (2019) A simulation-assisted complexity metric for design optimization of integrated architecture aero-engine structures. *Structural and Multidisciplinary Optimization* 60, 287. <https://doi.org/10.1007/s00158-019-02308-5>
- Rozenburg NFM and Eekels J** (1995) *Product Design: Fundamentals and Methods*, Vol. 2. Chichester: Wiley.
- Sandberg M, Tyapin I, Kokkolaras M, Isaksson O, Aidanpää JO and Larsson T** (2011) A knowledge-based master-model approach with application to rotating machinery design. *Concurrent Engineering Research and Applications* 19, 295–305.
- Schachinger P and Johannesson H** (2000) Computer modelling of design specifications. *Journal of Engineering Design* 11, 317–329.
- Suh NP** (1990) *The Principles of Design*, Vol. 990. New York: Oxford University Press. Available at: <http://scholar.google.com/scholar?hl=en&btnG=Search&q=intitle:The+Principles+of+Design#0>.
- Summers JD, Eckert CM and Goel A** (2013) Function in engineering: benchmarking representations and models. *Proceedings of the International Conference on Engineering Design, ICED*, Vol. 2 DS75-02, 19–22 August, Sungkyunkwan University, Seoul, Korea, pp. 223–232.
- Thebeau RE** (2001) *Knowledge management of system interfaces and interactions from product development processes*. Boston, MA, USA: Massachusetts Institute of Technology.
- Tjalve E** (1976) *Systematisk Udformning af Industriprodukter—Vaerktojer for konstruktøren*. [Systematic Design of Industrial Products—Tools for the Design Engineer]. København, Denmark: Akademiskforlag.
- Tomiya T, Van Beek TJ, Cabrera AAA, Komoto H and D'Amelio V** (2013) Making function modeling practically usable. *Artificial Intelligence for Engineering Design, Analysis and Manufacturing: AIEDAM* 27, 301–309.
- Vermaas PE** (2013) The coexistence of engineering meanings of function: four responses and their methodological implications. *Artificial Intelligence for Engineering Design, Analysis and Manufacturing: AIEDAM* 27, 191–202.
- Wahl A and Johannesson H** (2010) Managing design change in configurable component based product platforms. *Proceedings of NordDesign 2010, the 8th International NordDesign Conference*, 25–27 August, Göteborg, Sweden, pp. 413–423.
- Wang R, Nellippallil AB, Wang G, Yan Y, Allen JK and Mistree F** (2018) Systematic design space exploration using a template-based ontological method. *Advanced Engineering Informatics* 36, 163–177.
- Woodbury RF** (1991) Searching for designs: paradigm and practice. *Building and Environment* 26, 61–73.
- Woodbury RF and Burrow AL** (2006) Whither design space? *Artificial Intelligence for Engineering Design, Analysis, and Manufacturing: AIEDAM* 20, 63–82.
- Wyatt DF, Eckert CM and Clarkson PJ** (2009) Design of product architectures in incrementally developed complex products. *International Conference on Engineering Design ICED 09*, 24–27 August, Stanford University, Stanford, CA, USA, pp. 167–178.
- Jakob R. Müller** is a PhD student in the research group Systems Engineering Design at Chalmers University of Technology, Sweden. He got his BSc from Stuttgart University and graduated with an MSc in Product Development from Jönköping University in 2015. His research is aimed at developing and improving methodologies to assist in the product development process, focusing on a methodical connection between the modeling domains of function and geometry.
- Dr Ola Isaksson** is a professor in Product Development and Head of the Systems Engineering Design research group. He has a PhD in Computer-Aided Design from the Luleå University of Technology, and until 2015, he had a specialist career at GKN Aerospace Engine Systems. He has until now participated in more than 50 research projects nationally and internationally and has research interest and experience in engineering design support systems for product development. Of particular interest to understand and develop product development capabilities to meet new societal and industrial needs and exploit technological advancement in digitalization and manufacturing.
- Jonas Landahl** is a PhD candidate at the Department of Industrial and Materials Science, Chalmers University of Technology, Sweden. He received his master's degree in Mechanical Engineering in 2013 at Chalmers. The main research topic for his thesis regards platform design for producibility, which primarily concerns the identification of commonalities within families of products and production systems as well as the modeling and assessment of the product-production interplay. The aim is to devise methods and tools that can facilitate collaborative design and production decisions early in platform design.
- Visakha Raja** his research work is an industrial PhD project at GKN Aerospace Engine Systems, Sweden that specializes in the design and manufacture of aero-engine static structures. The research objective is to investigate how static engine structures are affected by changes in engine architectures and how a design change at a component level might influence overall engine performance. The project in overall aims to enable informed design decisions for aero-engine structural components that could lead to efficient engines with lower fuel burns and reduced emissions.
- Dr Massimo Panarotto** is a postdoctoral research fellow at Chalmers University of Technology. His main research focus is on developing models and applications for determining the lifecycle value of a new engineering system. He holds a PhD in Mechanical Engineering, earned at Blekinge Institute of Technology in 2015.
- Christoffer Levandowski** resides in the ocean between platform-based development and product lifecycle management. In more comprehensible words, the research focuses on finding IT tools and processes for staying competitive by means of creating designs and technology that is reusable in many products so that you can leverage of the development longer. The research explicitly targets support for working across the life cycle of the product, integrating technology, and product and production development.
- Dag Raudberget** holds a Master of Science in Aeronautical and Vehicle Engineering from the KTH Royal Institute of Technology, Stockholm. He was employed as a consultant in product development, mostly for the automotive industry between the years 1997–2000 before joining the University of Jönköping as a Lecturer. In 2001, he became the head of the bachelor program 'Product Development and Design'. Since 2007, he is a member of a research group within the area of product development – computer-supported engineering design. Currently, he is a part time PhD student in the product and process development at the Chalmers University of Technology.