



## **PKS 1830-211: OH and HI at $z = 0.89$ and the first MeerKAT UHF spectrum**

Downloaded from: <https://research.chalmers.se>, 2024-04-16 05:08 UTC

Citation for the original published paper (version of record):

Combes, F., Gupta, N., Muller, S. et al (2021). PKS 1830-211: OH and HI at  $z = 0.89$  and the first MeerKAT UHF spectrum. *Astronomy and Astrophysics*, 648.  
<http://dx.doi.org/10.1051/0004-6361/202040167>

N.B. When citing this work, cite the original published paper.

# PKS 1830–211: OH and H I at $z = 0.89$ and the first MeerKAT UHF spectrum<sup>★</sup>

F. Combes<sup>1</sup>, N. Gupta<sup>2</sup>, S. Muller<sup>3</sup>, S. Balashev<sup>4</sup>, G. I. G. Józsa<sup>5,6,7</sup>, R. Srianand<sup>2</sup>, E. Momjian<sup>8</sup>, P. Noterdaeme<sup>9</sup>, H.-R. Klöckner<sup>10</sup>, A. J. Baker<sup>11</sup>, E. Boettcher<sup>12</sup>, A. Bosma<sup>13</sup>, H.-W. Chen<sup>12</sup>, R. Dutta<sup>14,15</sup>, P. Jagannathan<sup>8</sup>, J. Jose<sup>16</sup>, K. Knowles<sup>17</sup>, J.-K. Krogager<sup>9</sup>, V. P. Kulkarni<sup>18</sup>, K. Moodley<sup>17,19</sup>, S. Pandey<sup>16</sup>, P. Petitjean<sup>9</sup>, and S. Sekhar<sup>8,20</sup>

<sup>1</sup> Observatoire de Paris, LERMA, Collège de France, CNRS, PSL University, Sorbonne University, 75014 Paris, France  
e-mail: [francoise.combes@obspm.fr](mailto:francoise.combes@obspm.fr)

<sup>2</sup> Inter-University Centre for Astronomy and Astrophysics, Post Bag 4, Ganeshkhind, Pune 411 007, India

<sup>3</sup> Department of Space, Earth and Environment, Chalmers University of Technology, Onsala Space Observatory, 43992 Onsala, Sweden

<sup>4</sup> Ioffe Institute, Polytekhnicheskaya 26, 194021 Saint-Petersburg, Russia

<sup>5</sup> South African Radio Astronomy Observatory, 2 Fir Street, Black River Park, Observatory 7925, South Africa

<sup>6</sup> Department of Physics and Electronics, Rhodes University, PO Box 94, Makhanda 6140, South Africa

<sup>7</sup> Argelander-Institut für Astronomie, Auf dem Hügel 71, 53121 Bonn, Germany

<sup>8</sup> National Radio Astronomy Observatory, Socorro, NM 87801, USA

<sup>9</sup> Institut d'Astrophysique de Paris, CNRS-SU, UMR 7095, 98bis Bd Arago, 75014 Paris, France

<sup>10</sup> Max-Planck-Institut für Radioastronomie, Auf dem Hügel 69, 53121 Bonn, Germany

<sup>11</sup> Department of Physics and Astronomy, Rutgers, The State University of New Jersey, 136 Frelinghuysen Road, Piscataway, NJ 08854-8019, USA

<sup>12</sup> Department of Astronomy & Astrophysics, The University of Chicago, 5640 S Ellis Ave., Chicago, IL 60637, USA

<sup>13</sup> Aix Marseille Univ., CNRS, CNES, LAM, Marseille, France

<sup>14</sup> Institute for Computational Cosmology, Durham University, South Road, Durham DH1 3LE, UK

<sup>15</sup> Centre for Extragalactic Astronomy, Durham University, South Road, Durham DH1 3LE, UK

<sup>16</sup> ThoughtWorks Technologies India Private Limited, Yerawada, Pune 411 006, India

<sup>17</sup> Astrophysics Research Centre and School of Mathematics, Statistics & Computer Science, University of KwaZulu-Natal, Durban 4041, South Africa

<sup>18</sup> Department of Physics and Astronomy, University of South Carolina, Columbia, SC 29208, USA

<sup>19</sup> School of Mathematics, Statistics & Computer Science, University of KwaZulu-Natal, Durban 4041, South Africa

<sup>20</sup> The Inter-Univ. Institute for Data Intensive Astronomy (IDIA), Dep. of Astronomy, and Univ. of Cape Town, Private Bag X3, Rondebosch 7701, South Africa, and Univ. of the Western Cape, Dep. of Physics and Astronomy, Bellville 7535, South Africa

Received 18 December 2020 / Accepted 25 February 2021

## ABSTRACT

The Large Survey Project (LSP) “MeerKAT Absorption Line Survey” (MALS) is a blind H I 21 cm and OH 18 cm absorption line survey in the *L*- and *UHF*-bands, primarily designed to better determine the occurrence of atomic and molecular gas in the circumgalactic and intergalactic medium, and its redshift evolution. Here we present the first results using the *UHF* band obtained towards the strongly lensed radio source PKS 1830–211, revealing the detection of absorption produced by the lensing galaxy. With merely 90 min of data acquired on-source for science verification and processed using the Automated Radio Telescope Imaging Pipeline (ARTIP), we detect in absorption the known H I 21 cm and OH 18 cm main lines at  $z = 0.89$  at an unprecedented signal-to-noise ratio (4000 in the continuum, in each  $6 \text{ km s}^{-1}$  wide channel). For the first time we report the detection of OH satellite lines at  $z = 0.89$ , which until now have not been detected at  $z > 0.25$ . We decompose the OH lines into a thermal and a stimulated contribution, where the 1612 and 1720 MHz lines are conjugate. The total OH 1720 MHz emission line luminosity is  $6100 L_{\odot}$ . This is the most luminous known 1720 MHz maser line and is also among the most luminous of the OH main line megamasers. The absorption components of the different images of the background source sample different light paths in the lensing galaxy, and their weights in the total absorption spectrum are expected to vary in time on daily and monthly time scales. We compare our normalized spectra with those obtained more than 20 years ago, and find no variation. We interpret the absorption spectra with the help of a lens galaxy model derived from an *N*-body hydrodynamical simulation, with a morphology similar to its optical HST image. The resulting absorption lines depend mainly on the background continuum and the radial distribution of the gas surface density for each atomic and molecular species. We show that it is possible to reproduce the observations assuming a realistic spiral galaxy disk without invoking any central gas outflows. However, there are distinct and faint high-velocity features in the ALMA millimeter absorption spectra that most likely originate from high-velocity clouds or tidal features. These clouds may contribute to broaden the H I and OH spectra.

**Key words.** galaxies: ISM – quasars: absorption lines – quasars: individual: PKS 1830–211

<sup>★</sup> A copy of the reduced spectrum is only available at the CDS via anonymous ftp to [cdsarc.u-strasbg.fr](https://cdsarc.u-strasbg.fr) (130.79.128.5) or via <http://cdsarc.u-strasbg.fr/viz-bin/cat/J/A+A/648/A116>

## 1. Introduction

PKS 1830–211 is a highly reddened radio quasar at  $z = 2.51$  (Lidman et al. 1999), and also the brightest known radio lens in the sky. It was identified as a gravitational lens on the basis of its peculiar radio spectrum and morphology (Pramesh Rao & Subrahmanyan 1988; Jauncey et al. 1991). Its morphology (see appendix) reveals two compact radio components, referred to as northeast (NE) and southwest (SW), separated by one arcsecond and surrounded by a low surface-brightness Einstein ring, meaning that the background radio source and the lens center are well aligned along the line of sight. The two compact components have a relatively flat spectrum, with a spectral index of  $\sim -0.7$ , consistent with synchrotron emission, while the ring spectrum is steeper, such that at low frequency ( $<1.7$  GHz) the ring is contributing more significantly to the total flux density. The line of sight of PKS 1830–211 is very close in projection to the Galactic plane (galactic latitude  $= -5.71^\circ$ ) and is confused with stars, and therefore for a long time it was difficult to optically identify the lensing galaxy (Courbin et al. 1998). The redshift  $z = 0.89$  of the lensing galaxy was discovered through molecular absorption (Wiklind & Combes 1996), and it was determined that most of this absorption comes from the SW image,  $\sim 3$  kpc from the center (Frye et al. 1997). There is also a much weaker molecular absorption at  $V = -150 \text{ km s}^{-1}$  towards the NE image in the opposite direction at 5 kpc from the center of the nearly face-on lensing galaxy (Wiklind & Combes 1998; Koopmans & de Bruyn 2005). Throughout the present paper, the velocity scale is defined with respect to  $z = 0.88582$  (heliocentric reference frame), which corresponds to the main molecular (e.g., CO, HCO<sup>+</sup>, and HCN) absorption components detected at millimeter (mm) wavelengths (Wiklind & Combes 1998).

The apparent size of the lensed images of the quasar at mm wavelengths is a fraction of a milliarcsecond (Jin et al. 2003; Guirado et al. 1999), implying that the molecular absorption could be originating from a single molecular cloud of a few parsecs in size. However, due to the thickness of the gaseous plane along the line of sight, the pencil beam from the quasar core travels several hundred parsecs in the galaxy, and encounters many clouds along the line of sight, covering a large velocity gradient. This broadens the absorption spectrum because the gas actually involved in the absorption traces the velocity gradient over  $\sim 1$  kpc in the disk. HI 21 cm and OH 18 cm main absorption lines have also been detected at  $z = 0.89$  (Chengalur et al. 1999; Koopmans & de Bruyn 2005).

It is worth noting that PKS 1830–211 also traces an HI 21 cm absorber at  $z = 0.19$  (Lovell et al. 1996; Allison et al. 2017), albeit with a smaller velocity width. Ninety percent of the total 21 cm optical depth ( $\Delta V_{90}$ ) of the low-redshift absorber is contained within  $86 \text{ km s}^{-1}$  (Gupta et al. 2021).

The absorber at  $z = 0.89$  is particularly rich in molecules and also in dust. A strong absorption at rest-frame  $10 \mu\text{m}$  reveals amorphous or crystalline silicates (Aller et al. 2012). More than sixty molecular species associated with this absorber have been detected towards the SW component, where the inferred H<sub>2</sub> column density is  $\sim 2 \times 10^{22} \text{ cm}^{-2}$  (Muller et al. 2011, 2014; Terceiro et al. 2020). In contrast, only 19 species, including atomic hydrogen and carbon, have been detected towards the NE component (at 5 kpc from the center), where the column density of the molecular gas is lower by an order of magnitude and the gas is more diffuse. On the contrary, at 18–21 cm wavelengths, it is the NE component which has the stronger absorption signal (Chengalur et al. 1999; Koopmans & de Bruyn 2005). The

absorption spectrum peaks at  $V = -150 \text{ km s}^{-1}$ , and is weaker at  $\sim 0 \text{ km s}^{-1}$ . This suggests that, towards the center of the lensing galaxy (SW at 3 kpc), the gas phase is mostly molecular and the HI is depleted. Compared to the mm absorptions, the broader line widths of  $\sim 280 \text{ km s}^{-1}$  and  $\sim 150 \text{ km s}^{-1}$  (FWHM) for HI and OH cm-absorption, respectively, at  $z = 0.89$  are explained by the greater thickness of the HI or OH plane, and to some extent by the more extended background radio continuum at lower frequencies.

Such a strong lens system should be useful to determine the Hubble constant through the cosmography method or time-delay between the images. However, it is then necessary to precisely determine the mass distribution of the lens, which has been difficult because of extinction and confusion with Milky Way stars (Courbin et al. 2002; Winn et al. 2002). Even the determination of the center of the lensing galaxy is problematic, and two models have been developed, with a bright peak at the center of the lens being a nearby star (Courbin et al. 2002) or the bulge of the lensing galaxy (Winn et al. 2002). The detection of several absorption components at different velocities towards the different images helps to determine the geometry of the lens, which is a nearly face-on spiral galaxy (Wiklind & Combes 1998). Recently, the detection of a third lensed image of PKS 1830–211 with ALMA by Muller et al. (2020) has brought more constraints, leading to refinement of the lens model.

Due to its very strong radio continuum and absorption lines, PKS 1830–211 is also one of the favorite targets for science verification at various radio telescopes. Very recently it was observed as part of the preparation for the MeerKAT Absorption Line Survey (MALS) to demonstrate the spectral line capabilities of MeerKAT. MALS has begun MeerKAT science verification and proper survey observations using the *L*- and *UHF*-bands covering 900–1670 MHz and 580–1015 MHz, respectively (Gupta et al. 2017). Owing to the excellent sensitivity of MeerKAT (Jonas & MeerKAT Team 2016; Camilo et al. 2018; Mauch et al. 2020), the *L*-band spectrum of PKS 1830–211 presented in Gupta et al. (2021) provided a robust characterization of HI 21 cm (from  $z = 0.19$ ) and OH 18 cm main absorption lines from  $z = 0.89$ . Here, we present the first MeerKAT *UHF*-band spectrum that simultaneously covers both HI and all four OH 18 cm lines for the  $z = 0.89$  system. We report for the first time the detection of the OH satellite lines.

This paper is structured as follows. Section 2 presents the details of the observations and data analysis with ARTIP. The results in terms of optical depths and column densities are quantified in Sect. 3, where we discuss the origin of the various absorption components in comparison with the dense molecular gas absorptions, and present a lens-galaxy model. Section 4 summarizes our conclusions. To compute distances, we adopt a flat  $\Lambda$ CDM cosmology, with  $\Omega_m = 0.29$ ,  $\Omega_\Lambda = 0.71$ , and the Hubble constant  $H_0 = 70 \text{ km s}^{-1} \text{ Mpc}^{-1}$ . At the distance of the PKS 1830–211 absorber, 1 arcsec corresponds to 7.8 kpc in physical units.

## 2. Observations and data analysis

The field centered at PKS 1830–211 was observed on July 13, 2020, using the MeerKAT-64 array and 32 K mode of the SKA Reconfigurable Application Board (SKARAB) correlator. For these *UHF*-band science verification observations, the total observable bandwidth of 544 MHz was split into 32 768 frequency channels. This corresponds to a frequency resolution of 16.602 kHz, or  $6.1 \text{ km s}^{-1}$  at the center of the band, i.e., 815.9917 MHz. The correlator dump time was 8 s and the data

were acquired for all four polarization products, labeled as XX, XY, YX, and YY. Of the 64 antennas, 56 participated in these observations. The baseline lengths in the dataset are in the range 29–7300 m. We also observed PKS 1934–638 and 3C 286 for flux density and bandpass calibrations. As PKS 1830–211 is a bonafide gain calibrator for the VLA in the C- and D- array configurations, there was no need to separately observe a complex gain calibrator. The total on-source time on PKS 1830–211 and duration of the observations are 90 and 155 min, respectively. The full dataset in measurement set format is about 3.1 TB.

Here we are interested only in the Stokes- $I$  properties of the target. Therefore, for processing we generated a measurement set consisting of only XX and YY polarization products. We also dropped the extreme 1024 frequency channels at both edges of the band. The resulting data set consisting of 30 720 channels was processed on the VROOM cluster at IUCAA using the latest version of the Automated Radio Telescope Imaging Pipeline ARTIP based on CASA 5.6.2. The details of ARTIP and data processing steps are provided in Gupta et al. (2021). In short, an initial RFI mask was applied to the data to mask the strongest radio frequency interference (RFI) in the band. Up to this stage, only  $\sim 10.0\%$  of the bandwidth gets flagged. After this step, the data were further flagged and calibrated using the ARTIP-CAL package. The spectral-line processing of calibrated visibilities was done using the ARTIP-CUBE package. The final continuum-subtracted spectrum of PKS 1830–211 is shown in Fig. 1. The gray-shaded regions in the figure mark the above-mentioned initial RFI mask. For the ARTIP-CUBE processing, the frequency band was partitioned into 15 spectral windows (SPW) with an overlap of 256 frequency channels. The unique frequency ranges covered by these measurement sets are marked by dashed vertical lines in Fig. 1. For easier referencing, we refer to these as SPW-0 to -14.

We reiterate the fact that prior to any flagging and calibrations, the 935–960 MHz range was flagged to mask persistent strong RFI. However, the spectral line processing revealed some additional RFI. Specifically, we find the following frequency ranges to be persistently affected by RFI: 759.1–759.2, 798.6–798.9, 925.1–925.3, 965.5–965.6, 1028.8–1030.9, 1040.3–1041.8, and 1062.9–1065.0 MHz (see hatched regions in Fig. 1). We also find a few frequency ranges to be affected by sporadic RFI. These are at 735.275, 765.28, 896.6, 899.294–899.404, and 928.0–935.0 MHz, and often accompanied by positive and/or negative spikes in the spectra. The spike at  $\sim 839$  MHz is caused by the known H I 21 cm absorption line in the spectrum of the bandpass calibrator (3C 286; Wolfe et al. 2008). Nevertheless, as shown in Fig. 1 the UHF spectrum is spectacularly clean, and we detect the known H I 21 cm and OH 18 cm main lines at  $z = 0.89$ . Thanks to the excellent sensitivity, the MeerKAT spectrum has also led to the detection of OH satellite lines (further details in Sect. 3).

For continuum imaging through the ARTIP-CONT package, a more stringent RFI mask was applied to the calibrated visibilities to completely exclude band edges and RFI-afflicted regions (see horizontal dotted lines in Fig. 1). The data were then averaged in frequency over 32 channels ( $\sim 0.531$  MHz) and regridded along the frequency axis into 16 distinct spectral windows. We created a widefield broad band  $6k \times 6k$  continuum image with a pixel size of  $3''$ , spanning  $\sim 5^\circ$  using `tclean` in CASA. The `w-projection` algorithm was used as the gridding algorithm in combination with Multi-scale Multi-term Multi-frequency synthesis (MTMFS) for deconvolution, with `nterms`=2 and four pixel scales to model the extended emission (cf. Rau & Cornwell 2011; Bhatnagar et al. 2013;

Jagannathan et al. 2017). Two rounds of phase-only self-calibration were carried out along with a final round of amplitude and phase self-calibration. Imaging masks were appropriately adjusted using PyBDSF between major cycles during imaging and self-calibration (Mohan & Rafferty 2015).

The final continuum image of PKS 1830–211 constructed using `robust=0` weighting has a synthesized beam of  $17.4'' \times 13.1''$  with a position angle =  $+69.0^\circ$ . The rms noise in the continuum image is  $80 \mu\text{Jy beam}^{-1}$  close to the bright radio source at the center and  $30 \mu\text{Jy beam}^{-1}$  (dynamic range  $\sim 380\,000$ ) away from it. The total continuum flux density of the quasar is  $11.40 \pm 0.01$  Jy at the reference frequency of 832 MHz. The quoted uncertainty on the flux density corresponds to errors from the single Gaussian component fitted to the continuum image. We note that the flux density accuracy at these low frequencies is expected to be about  $\sim 5\%$ . The flux density at 832 MHz is within 1.3% of the flux density of 11.25 Jy measured at 1270 MHz by Gupta et al. (2021) from the MeerKAT  $L$ -band data acquired on December 19, 2019. However, we note that in general the quasar is known to be variable at radio wavelengths<sup>1</sup>. The in-band integrated spectral index is  $\alpha = 0.004 \pm 0.001$ .

### 3. Results

#### 3.1. OH absorption

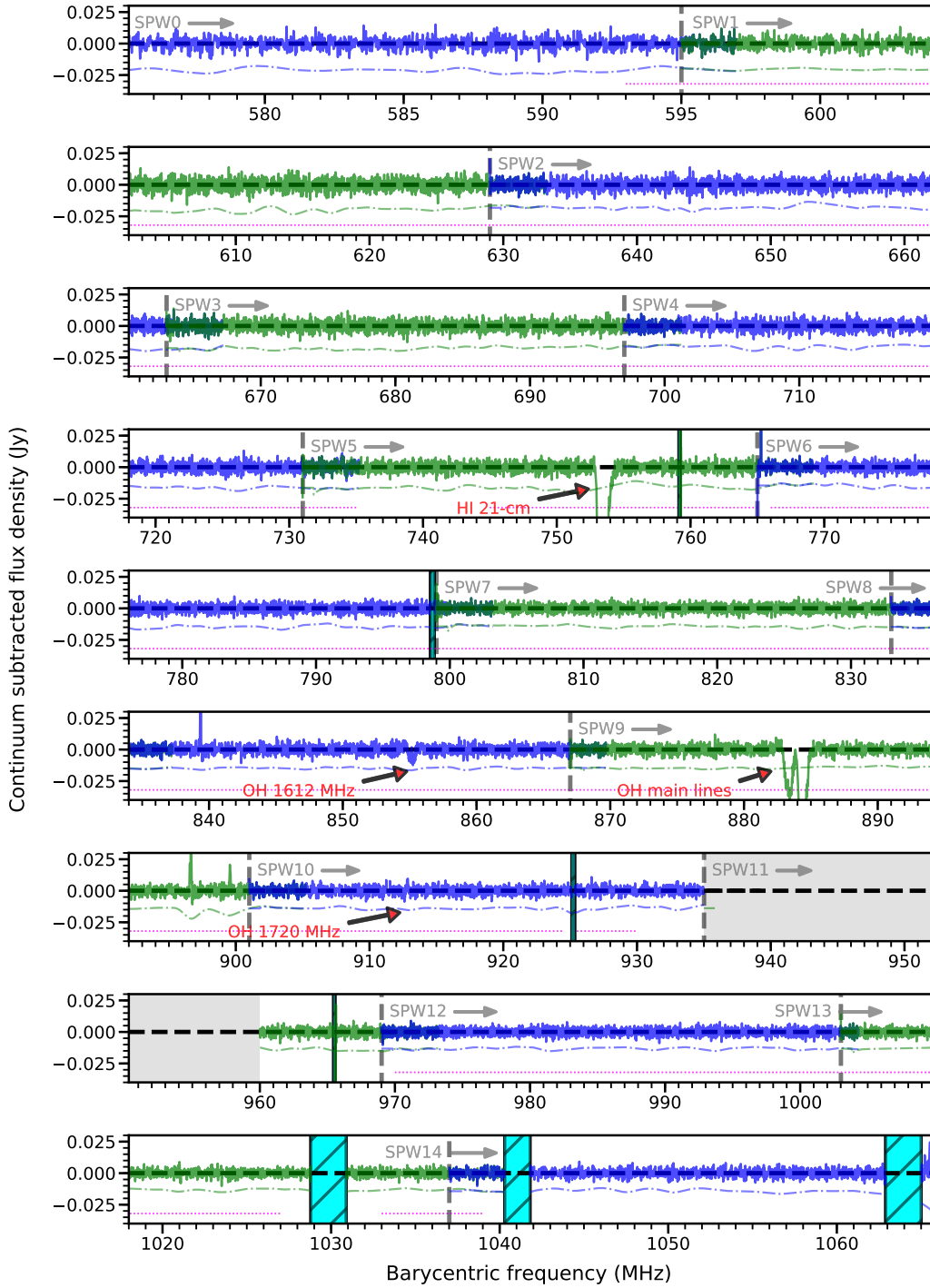
The OH main lines with rest frequencies of 1665 and 1667 MHz are clearly seen in the first MeerKAT UHF-band spectrum (580–1015 MHz) presented here (see Fig. 1). We zoom in on these in the top two panels of Fig. 2. These lines were also detected in the overlapping  $L$ -band (900–1670 MHz) spectrum obtained with MeerKAT on December 19, 2019 (Gupta et al. 2021). The absorption obtained from the first UHF spectrum presented here is in good agreement with the  $L$ -band profile (see Sect. 3.3 for details on variability). In our  $L$ -band observations, the 1720 MHz line redshifted to 912 MHz was also covered but is only tentatively detected because of low-S/N and is therefore not claimed. The redshifted 1612 MHz line was outside the  $L$ -band. With the present UHF-spectrum, we clearly detect the 1612 MHz line (redshifted to 855 MHz). Combining the  $L$ - and the UHF-band spectra with appropriate rms weights, we now also detect the 1720 MHz line at a greater significance. Recall that the redshifted satellite line frequencies are unaffected by RFI (see Sect. 2). The profiles of the two satellite lines are presented in the bottom two panels of the figure.

This is the first time the OH satellite lines have been detected towards PKS 1830–211. This is also the highest redshift at which the OH satellite lines have been detected so far. The simultaneous detection of all four OH 18 cm lines in the same spectrum allows us to investigate the nature of the absorbing gas independently of the line variability. Further, due to the proximity of the 18 cm lines in the frequency space, the structure of the background radio continuum illuminating the absorbing gas can be assumed to be the same.

The integrated optical depths of the main lines, that is those at 1665 and 1667 MHz, are  $0.729 \pm 0.012$  and  $1.301 \pm 0.013 \text{ km s}^{-1}$ , respectively. Ninety percent of the total optical depth ( $\Delta V_{90}$ ) of the 1667 MHz line is contained within  $265 \text{ km s}^{-1}$ . For an optically thin cloud, the integrated OH optical depth of the 1667 MHz line is related to the OH column density

<sup>1</sup> Over 1996–2016, the flux density at  $\sim 1.4$ – $0.8$  GHz varied between 10–14 Jy (cf. Fig. 7 of Allison et al. 2017).





**Fig. 1.** Continuum-subtracted Stokes- $I$  spectrum of PKS 1830–211. The adjacent SPWs are plotted alternately in blue and green, separated by dashed vertical lines. Gray-shaded regions mark frequency ranges that were masked prior to any calibration. Hatched regions were masked after calibration and imaging to exclude persistent RFI identified during the absorption line analysis. The dotted magenta line marks frequency ranges used for the continuum imaging. The locations of redshifted HI 21 cm and OH 18 cm line frequencies at  $z = 0.89$  are also indicated.

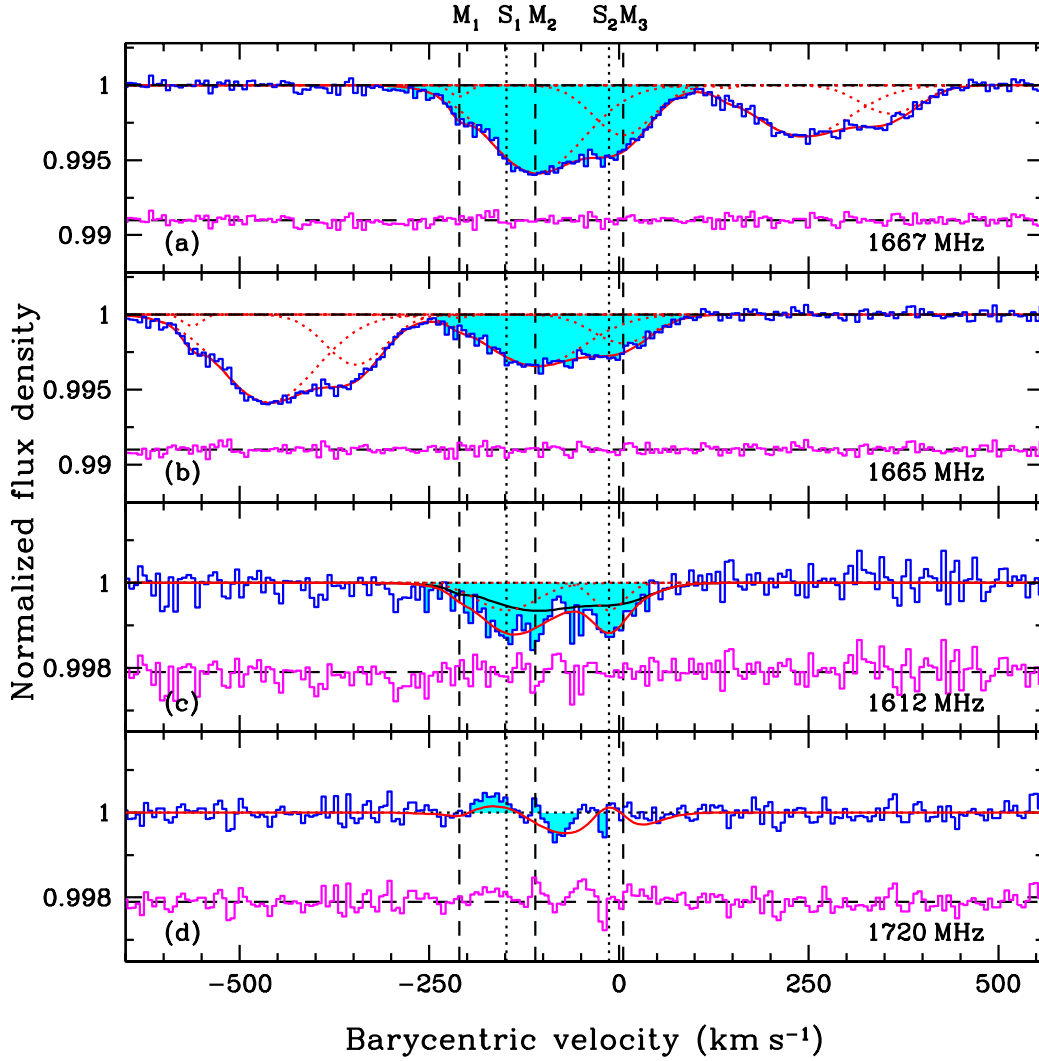
$N(\text{OH})$  through

$$N(\text{OH}) = 2.24 \times 10^{14} \frac{T_{\text{ex}}}{f_{\text{c}}^{\text{OH}}} \int \tau_{1667}(\nu) d\nu \text{ cm}^{-2}, \quad (1)$$

where  $T_{\text{ex}}$  is the excitation temperature in Kelvin,  $\tau_{1667}(\nu)$  is the optical depth of the 1667 MHz line at velocity  $\nu$ , and  $f_{\text{c}}^{\text{OH}}$  is the covering factor (e.g., Liszt & Lucas 1996). Adopting

$T_{\text{ex}} = 5.14 \text{ K}$  that is, coupled to the cosmic microwave background (CMB),  $T_{\text{CMB}}$  at  $z = 0.89$ , we estimate  $N(\text{OH}) = (1.49 \pm 0.02) \times 10^{15} (T_{\text{ex}}/5.14 \text{ K})(1.0/f_{\text{c}}^{\text{OH}}) \text{ cm}^{-2}$ . We note that this is a surface average, because it is likely that the filling factor is below 1.

In local thermodynamic equilibrium (LTE), the relative strengths of 18 cm lines are expected to follow the ratio 1612:1665:1667:1720 MHz = 1:5:9:1. The total integrated



**Fig. 2.** MeerKAT Stokes- $I$  spectrum (blue) of OH 18 cm lines at  $z = 0.89$  towards PKS 1830–211. The velocity scale is defined with respect to  $z = 0.88582$ . The spectral rms in the region close to the 1667 MHz line is  $2.9 \text{ mJy beam}^{-1}$  per  $6.1 \text{ km s}^{-1}$  channel. The vertical dashed and dotted lines (black) represent the locations of the individual Gaussian components fitted to the absorption in main lines ( $M_1$ ,  $M_2$ , and  $M_3$ ; dotted red lines in (a) and (b)) and the excess absorption in the 1612 MHz satellite line ( $S_1$  and  $S_2$ ; dotted lines in (c); also see Table 1), respectively. The black solid line in panel c represents the absorption profile predicted under LTE due to  $M_1$ ,  $M_2$ , and  $M_3$ . The difference between the red and black solid lines represents the maser contribution due to pumping, and is conjugate with the 1720 MHz line in (d): at  $V = -170 \text{ km s}^{-1}$ , the 1720 MHz line is in emission and 1612 MHz in absorption, while at  $V = -80 \text{ km s}^{-1}$ , the 1720 MHz is in absorption, and the 1612 MHz, in emission. In all the panels, the total fit and the residuals, which are arbitrarily offset for clarity, are plotted as solid lines in red and magenta, respectively.

optical depths of the main lines are remarkably consistent with the LTE ratio. To explore this further, we model the two main lines using multiple Gaussian components. Assuming that these lines originate from the same gas, we tie the centers and widths of the corresponding components. The overall profiles are reasonably modeled by a three-component fit (reduced  $\chi^2 \sim 1.1$ ), which is summarized in Table 1. The individual components marked as  $M_1$ ,  $M_2$ , and  $M_3$ , and the resultant fit along with the residuals are plotted in Fig. 2 (see panels a and b). Unsurprisingly, the total absorption in components  $M_2$  and  $M_3$  which account for  $\sim 98\%$  of the total optical depth is consistent with the LTE ratio. The component  $M_1$  is weak and it is difficult to probe its excitation character. We note that the excitation temperature of the 1.6 GHz OH transitions could be quite different from  $T_{\text{CMB}}$ , especially in the case of far-infrared and/or collisional pumping (see below), and our assumption is conservative but supported by the LTE ratios of the main lines.

If the OH ground-state levels are indeed thermalized, the gas producing 1667 MHz absorption will have nine times weaker opacity at the 1612 MHz line velocities. The absorption profile for the 1612 MHz line based on  $M_1$  to  $M_3$  is represented by solid (black) lines in Fig. 2 (panel c). Clearly, the gas that produces absorption in the main lines can only account for 61% of the absorption in the satellite line. The remaining excess absorption can be modeled using two components  $S_1$  and  $S_2$  given in Table 1. It appears that the satellite lines have a large contribution due to pumping that leads to nonthermal and possibly even inverted level populations. Comparing the two satellite lines, it is also clear that the nonthermal part of the 1612 MHz line has a deficiency of absorption near  $-80 \text{ km s}^{-1}$  due to emission (see bottom of Fig. 2).

Under certain excitation conditions, in particular pumping from far-infrared radiation around  $119 \mu\text{m}$ , the OH levels of the ground state (i.e.,  $^2\Pi_{3/2}$ ) can be inverted. In particular, the upper level of the 1720 MHz transition can be highly populated (as the

**Table 1.** Multiple Gaussian fits to the OH lines at  $z = 0.88582$ .

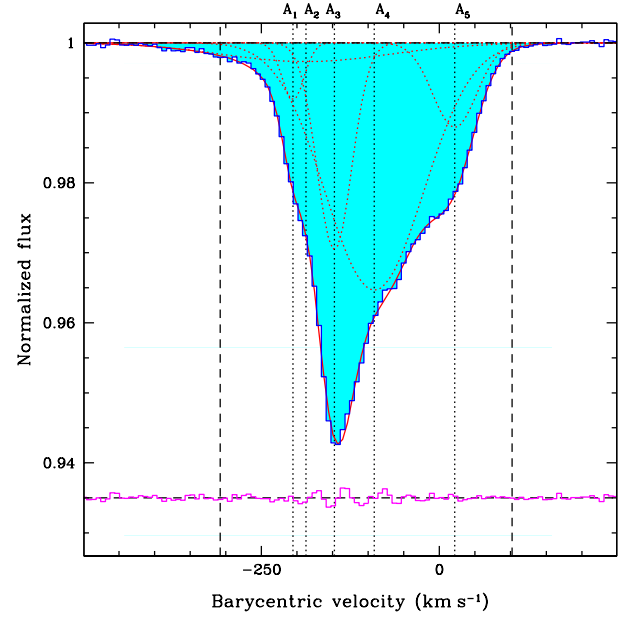
Id.	Center (km s <sup>-1</sup> )	$\sigma$ (km s <sup>-1</sup> )	$\tau_p$ (10 <sup>-3</sup> )
1667 MHz absorption			
$M_1$	$-211 \pm 3$	$12 \pm 4$	$0.8 \pm 0.1$
$M_2$	$-110 \pm 3$	$63 \pm 3$	$5.9 \pm 0.1$
$M_3$	$6 \pm 3$	$40 \pm 2$	$3.3 \pm 0.3$
1665 MHz absorption <sup>(a)</sup>			
$M_1$	—	—	$0.2 \pm 0.1$
$M_2$	—	—	$3.4 \pm 0.1$
$M_3$	—	—	$1.9 \pm 0.2$
Excess 1612 MHz absorption			
$S_1$	$-148 \pm 6$	$39 \pm 6$	$0.6 \pm 0.1$
$S_2$	$-13 \pm 5$	$21 \pm 5$	$0.6 \pm 0.1$

**Notes.** <sup>(a)</sup>The centers and widths of corresponding components fitted to the main lines are tied.

lower level of the 1612 MHz transition), triggering maser emission. The satellite OH lines can then exhibit “conjugate” behavior, that is, as mentioned above the gas exhibiting absorption in one line produces emission in the other. This peculiar feature of the OH levels due to lambda-doubling and hyperfine structure is a precious tool for probing fundamental physical constants (Darling 2003; Chengalur & Kanekar 2003; Kanekar et al. 2018). Despite the limited S/N, the 1720 MHz profile presented in the bottom panel of Fig. 2 shows both emission and absorption features suggesting such a behavior. When the two satellite lines are perfectly conjugate, the sum of their optical depths is zero. The solid red line in the bottom panel of Fig. 2 corresponds to the sum of (i) absorption due to  $M_1$ ,  $M_2$ , and  $M_3$  under LTE, and (ii) absorption due to  $S_1$  and  $S_2$  assuming perfect conjugate behavior. This simple model provides a reasonable representation of the observed 1720 MHz profile.

We note that the redshifted 1720 MHz line frequency is covered in both the *L*- and *UHF*-bands of MeerKAT. Indeed, the spectral features seen in panel d of Fig. 2 are also present in our *L*-band dataset (Gupta et al. 2021). The 1720 MHz profile presented here is already the weighted average of the spectra from the *L*-band data described in Gupta et al. (2021) and the present *UHF*-band data. Further investigation into the nature of the satellite lines and perfection of the conjugate behavior will require a more sensitive spectrum.

However, already the 1720 MHz line profile suggests that the conjugate behavior flips across at approximately  $-100$  km s<sup>-1</sup>; that is, at velocities  $< -100$  km s<sup>-1</sup> it shows emission and at higher velocities absorption. Such flipping has been observed in both galactic and extragalactic systems (see e.g., cases of Centaurus A and NGC 253; van Langevelde et al. 1995; Frayer et al. 1998). The flipping crucially depends on whether the OH molecules are pumped by the rotational intra-ladder transition at 119  $\mu$ m, in which case the 1720 MHz line shows emission and 1612 MHz absorption, or by the cross-ladder rotational transition at 79  $\mu$ m, in which case the opposite happens (see Elitzur 1976, especially Fig. 1). As explained in Frayer et al. (1998), because the intra-ladder transition becomes optically thick much sooner ( $N(\text{OH})/\Delta V \approx 10^{14}$  cm<sup>-2</sup> km<sup>-1</sup> s) than the cross-ladder transition ( $N(\text{OH})/\Delta V \approx 10^{15}$  cm<sup>-2</sup> km<sup>-1</sup> s), the observed behavior for PKS 1830–211 implies that the gas exhibiting conjugate behavior at velocities  $> -100$  km s<sup>-1</sup> has higher OH column density than at  $< -100$  km s<sup>-1</sup>. Notably, we do not see any significant



**Fig. 3.** MeerKAT *UHF* Stokes-*I* spectrum (blue) of H I 21 cm absorption at  $z = 0.89$  towards PKS 1830–211. The spectral rms noise is 3.2 mJy beam<sup>-1</sup> channel<sup>-1</sup>. Vertical dotted lines mark positions of Gaussian components, and dashed lines mark the velocity range over which the bulk of OH 1667 MHz absorption is detected.

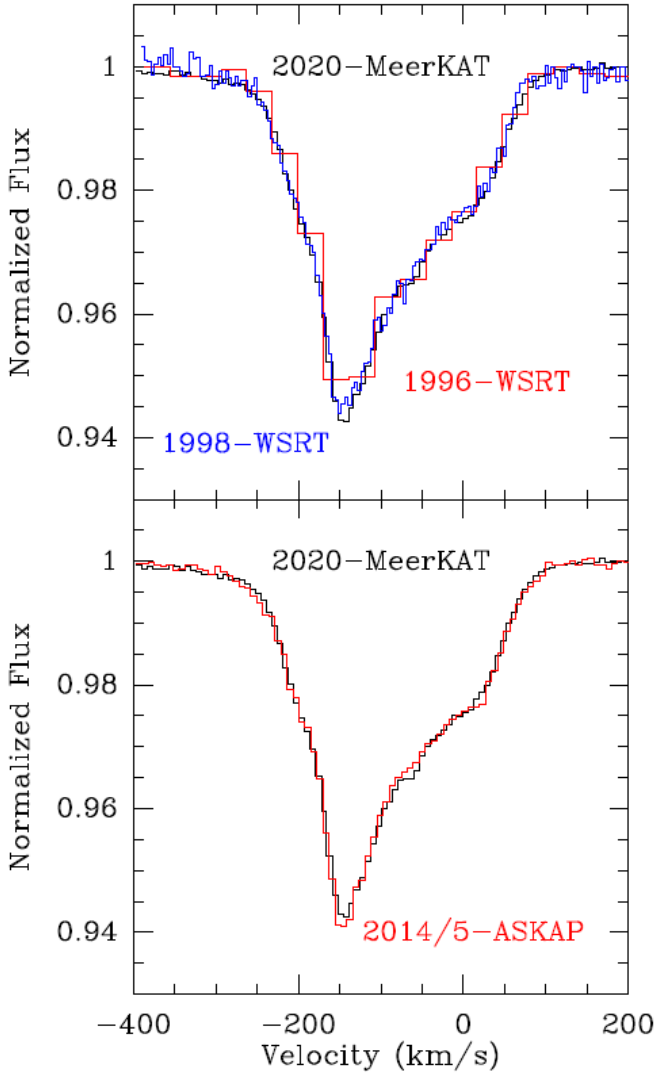
masing features in the 1720 MHz line at velocities  $> -50$  km s<sup>-1</sup>, that is, closer to the center of the lensing galaxy where denser gas tracers such as the CO(5–4) or HCO<sup>+</sup>(2–1) lines have been detected towards the SW image (Muller et al. 2014).

Finally, the emission component at  $-170$  km s<sup>-1</sup>, which is barely detected at  $3\sigma$  in the 1720 MHz line, has a total line flux density of  $0.037 \pm 0.011$  Jy km s<sup>-1</sup>. At  $z = 0.89$ , this corresponds to an enormous line luminosity of  $\sim 6100 L_\odot$ , which is approximately 20 times more luminous than the previously brightest known 1720 MHz maser associated with PKS 1413+135 at  $z = 0.247$  (Kanekar et al. 2004; Darling 2004). In the latter source, the OH-main lines are detected in absorption, but not at the same velocity as the satellite lines, suggesting they originate from a different gas component. It is interesting to note that the OH-main line absorption was not detected at the same time either. Kanekar et al. (2004) observed the satellite lines in June 2003 with the WSRT (Westerbork Synthesis Radio Telescope), and the main lines in October 2001 with the GMRT (Giant Metrewave Radio Telescope). Darling (2004) observed all four lines in December 2003 with the NRAO Green Bank telescope, but did not detect the main lines, indicating strong variability. We note that for PKS 1830–211, the 1720 MHz line luminosity is among the highest luminosities of all OH-main line megamasers (Darling & Giovanelli 2002).

### 3.2. H I absorption

In Fig. 3, we show H I 21 cm absorption at  $z = 0.89$ . The integrated H I 21 cm optical depth is  $\int \tau dv = 10.050 \pm 0.019$  km s<sup>-1</sup>, and the width  $\Delta V_{90} = 258$  km s<sup>-1</sup>. For an optically thin cloud the integrated 21 cm optical depth ( $\mathcal{T} \equiv \int \tau dv$ ) is related to the neutral hydrogen column density  $N(\text{H I})$ , spin temperature  $T_s$ , and covering factor  $f_c^{\text{H I}}$  through

$$N(\text{H I}) = 1.823 \times 10^{18} \frac{T_s}{f_c^{\text{H I}}} \int \tau(v) dv \text{ cm}^{-2}. \quad (2)$$



**Fig. 4.** *Top:* MeerKAT H I spectrum (black) taken on July 13, 2020, compared to the H I spectrum (red) observed on November 3, 1996, by Chengalur et al. (1999), and the one (blue) observed on October 25, 1998, by Koopmans & de Bruyn (2005), both with the WSRT. *Bottom:* MeerKAT H I spectrum (black), taken on July 13, 2020, compared to the H I average ASKAP spectrum (red) observed in July 2014 and July–October 2015 by Allison et al. (2017). All spectra have been normalized to their observed continuum.

Using this we get  $N(\text{H I}) = (1.83 \pm 0.01) \times 10^{21} (T_s/100 \text{ K}) (1.0/f_c^{\text{H I}}) \text{ cm}^{-2}$ .

The bulk of H I absorption can be identified with two components: one centered at  $\sim 0$  and the other at  $-150 \text{ km s}^{-1}$ . These are the velocities associated with mm-wave absorption lines towards the SW and NE components, respectively. Indeed, for the earlier reported 21 cm absorption profiles, which are presented in Fig. 4 of Sect. 3.3, a two-component Gaussian decomposition provides a reasonable fit. However, the high signal-to-noise ratio of the MeerKAT spectrum requires at least five Gaussian components ( $A_1$  to  $A_5$ ; reduced  $\chi^2 \sim 1.3$ ), as presented in Table 2 and Fig. 3. The remaining structure in the residuals is at the level of  $\tau \leq 0.0014$ . It does not necessarily represent discrete physical structures. Therefore, we do not attempt to improve the fit by adding more components.

Further, as the Gaussian components obtained above do not necessarily represent individual physical structures, we can also

**Table 2.** Multiple Gaussian fits to H I absorption at  $z = 0.88582$ .

Id.	Center ( $\text{km s}^{-1}$ )	$\sigma$ ( $\text{km s}^{-1}$ )	$\tau_p$ ( $10^{-3}$ )
$A_1$	$-205 \pm 1$	$15 \pm 1$	$8.6 \pm 0.6$
$A_2$	$-187 \pm 40$	$119 \pm 11$	$2.7 \pm 1.1$
$A_3$	$-148 \pm 1$	$24 \pm 1$	$30.0 \pm 0.9$
$A_4$	$-91 \pm 2$	$68 \pm 3$	$35.9 \pm 1.4$
$A_5$	$22 \pm 1$	$31 \pm 1$	$12.2 \pm 0.7$

utilize the velocity components previously used to model the OH lines. However, this exercise requires more components because there is an additional spectral feature present in the blue wing of H I 21 cm absorption (see vertical dashed lines in Fig. 3). A rather remarkable result obtained without any component-wise comparison is that the average [OH/H I] column density ratio  $\sim 8 \times 10^{-7}$  is slightly higher than the typical ratio ( $\sim 10^{-7}$ ) observed in the Galaxy (Li et al. 2018), and also in extragalactic absorbers (Kanekar & Chengalur 2002; Gupta et al. 2018a). For PKS 1830–211, this may be primarily due to the fact that the absorption at  $\sim 0 \text{ km s}^{-1}$  that is, towards the SW component, originates from gas which is primarily molecular. In Sect. 3.3 we provide evidence indicating that all these values are in perfect agreement with previous results obtained more than 20 years ago (Chengalur et al. 1999; Koopmans & de Bruyn 2005).

### 3.3. Time variability

The continuum flux from the background blazar at  $z = 2.507$  is significantly varying in time, by factors of up to ten in gamma-rays and two at radio wavelengths (e.g., Lovell et al. 1998; Martí-Vidal et al. 2013). These variations are seen in all three lensed components, that is, NE, SW, and ring, with time-delays. In X-rays, Oshima et al. (2001) show that the NE/SW flux ratio varies by factors as high as seven, invoking possible micro-lensing effects. While the NE and SW components are images of the blazar core, the ring is mainly due to the jet and a bright knot in the jet (e.g., Jin et al. 2003), and there is an observed jet precession period of one year (Nair et al. 2005). The delay between the two compact (NE and SW) radio components has been measured to be 27 days (e.g., Lovell et al. 1998; Wiklind & Combes 2001; Barnacka et al. 2011). Barnacka et al. (2015) observed several gamma-ray flares with *Fermi*-LAT and derived gamma-ray time delays of  $23 \pm 0.5$  days and  $19.7 \pm 1.2$  days, which might be consistent with the radio time delay; however this has been debated (see a reanalysis by Abdo et al. 2015). With VLBA observations at 4 GHz, during a period of 44 days, Garrett et al. (1997) found highly variable submilliarcsecond radio structures in the cores of both lensed images. It is therefore expected that the variations of the different continuum components will be reflected in the shape of the H I and OH absorption lines through time variability.

We compared all available H I and OH spectra from 1996 with the present MeerKAT ones. In Fig. 4, we show the comparison between all H I spectra. It is striking to see that they are all compatible, especially the last ones with high signal-to-noise ratios. No time variation is visible in the line, while the continuum varied by 40%. The MeerKAT spectrum has a five to six times higher signal-to-noise ratio than the old WSRT data by Koopmans & de Bruyn (2005). The slight differences can therefore be completely attributed to the higher noise in the latter.

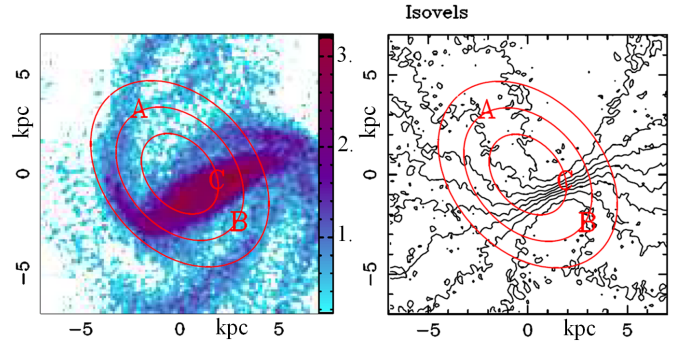


The S/N in the WSRT spectrum is 35 at the peak of the absorption, in channels of  $7.9 \text{ km s}^{-1}$ . The absorption peaks at 5% of the continuum, and the S/N on the continuum is 700. The average ASKAP spectrum has an  $S/N \sim 1000$  for the continuum, and 50 for the line in channels of  $7.3 \text{ km s}^{-1}$ , and this is the limiting factor in the comparison with our MeerKAT spectrum. There is a slight difference around  $V = -60 \text{ km s}^{-1}$  and  $V = -150 \text{ km s}^{-1}$  in the maximum amplitude of  $1.5 \times 10^{-3}$  normalised to the continuum in one channel, and a smaller difference in the two neighboring channels. But after averaging, this leads to a difference significant only at the  $1.7\sigma$  level. Similarly, the OH spectra also show no variation. The comparison between the MeerKAT OH-main line spectra from December 19, 2019, (Gupta et al. 2021) and July 13, 2020, (this paper) sets a limit of  $\Delta\tau_{3\sigma} < 0.0008$ .

This lack of variation at cm wavelengths contrasts with the variations detected in the mm-wave absorption spectra (Muller & Guélin 2008; Muller et al. 2014). We can interpret the above-mentioned constancy at cm wavelengths with several arguments: first, given the wider extent of the continuum emission at cm wavelengths, especially in the Einstein ring, the absorbing regions are much larger, whereas the continuum at mm wavelength consists mainly of two point sources; second, the absorbing medium in the H I component is more diffuse and less fragmented in the dense clouds (Srianand et al. 2013; Gupta et al. 2018b), such that the motion of possible plasmons (knots) in the background jet will not produce large variations in the absorption signal. Another factor is the height of the gas plane, which is likely much smaller in the dense molecular phase than in the atomic phase. The H I plane in spiral galaxies is quite thick, up to 1 kpc or more in the flaring outer parts (Burton 1976; Olling 1996). This means that the region illuminated by a point source will range up to  $\sim 1 \text{ kpc}$ , crossing the inclined plane, as discussed in Sect. 3.4. Therefore, the H I absorption spectrum gets blurred over a size of  $0.1''$ , the beam size of some cm-continuum emission studies (see Fig. A.1; Patnaik et al. 1993; Muller et al. 2020). If the gas surface filling factor is relatively high, all subclumps over these regions are averaged out, washing out any spatial variation of the order of 0.2 mas. In addition, due to opacity effects, the cm and mm continuum radiation does not originate from the same volumes: the mm observations probe deeper inside the jet, and hence probably more active regions of the background source.

### 3.4. Kinematic model of the spectra

Nair et al. (1993) proposed a detailed model for the lensing galaxy: these authors suggest a spiral galaxy centered at  $0.3''$  NE of the SW image with a mass of  $10^{11} M_{\odot}$  (rotational velocity  $\sim 260 \text{ km s}^{-1}$ ), low eccentricity, that is, nearly face-on, and with a position angle of  $\sim 12^{\circ}$ . The discovery of molecular absorption confirmed that it should be gas rich, and the velocity difference between NE and SW images ( $150 \text{ km s}^{-1}$ ) constrained its geometry (Wiklind & Combes 1998). Koopmans & de Bruyn (2005) made a kinematic model, taking into account the redshift of the source (Lidman et al. 1999) and more information about the lens image from Courbin et al. (2002) and Winn et al. (2002). Koopmans & de Bruyn (2005) concluded that the lens is inclined by  $i = 17\text{--}32^{\circ}$  on the sky, with a PA between  $-15$  and  $34^{\circ}$ . The model also depends on the velocity width of each absorbing component. Strikingly, the absorption in front of the SW image is rather broad, even in the molecular gas. This could originate from noncircular motions because this region of the lensing galaxy is closer to the center (much closer than the NE image, where the line width is smaller). Even if the background



**Fig. 5.** Galaxy model adopted from an  $N$ -body simulation snapshot: *left*: gas surface density projected on the sky with an inclination of  $26^{\circ}$  and  $\text{PA} = 15^{\circ}$ , and *right*: corresponding gas isovelocity curves separated by  $24.3 \text{ km s}^{-1}$  and ranging from  $-109.4 \text{ km s}^{-1}$  to  $+109.4 \text{ km s}^{-1}$ . The locations of NE image (A), SW image (B), and a third central image (C) close to the lensing-galaxy center are indicated together with the schematic contours of the Einstein ring, which are conspicuous at cm wavelengths.

core of the blazar is a point source in the mm regime, the region involved in the lensing galaxy has an extension of  $h \times \tan(i)$ , where  $h$  is the thickness of the plane, and  $i$  the inclination of the galaxy. This expression takes into account the length of the light path in the galaxy and its projection on the galaxy plane. The broadening of the line can therefore be caused by the velocity gradient in this zone.

One of the main uncertainties in the models of Koopmans & de Bruyn (2005) is the position of the center of the lens. Now that a third image, which was postulated by Nair et al. (1993) in the cm-wave radio images, has been detected with ALMA by Muller et al. (2020), the position of the lens is a fixed parameter (very close to the third image position). Thus, it appears that the bright spot towards the center is indeed a star and not the bulge of the lens galaxy as proposed by Courbin et al. (2002). Koopmans & de Bruyn (2005) found six best-fit models as a function of six positions of the lens center. Now we know that only one of these is close to reality: the one where their coordinates of the lens center with respect to the NE image (or the distance AC in Fig. 5) are ( $0.5''$  W,  $0.45''$  S). The result of these latter authors was then an inclination of  $i = 32^{\circ}$  for the lens plane and  $\text{PA} = -15^{\circ}$ . In the following we fix  $i = 26^{\circ}$  and  $\text{PA} = 15^{\circ}$  to better fit the HST morphology of the lensing galaxy. The difference in inclination may explain why Koopmans & de Bruyn (2005) selected a velocity dispersion of  $39 \text{ km s}^{-1}$  for the H I spectrum, while we need  $45 \text{ km s}^{-1}$  (see below).

#### 3.4.1. Galaxy model and background continuum

The HST/WFPC2  $F814W$  image published by Courbin et al. (2002) in their Fig. 2 (right) reveals the lensing object as a barred spiral galaxy, with quite a small bulge. Therefore it is a relatively late-type galaxy. To model the lens, we select a snapshot from an  $N$ -body simulation following the development of a bar and spiral arms in a late-type object described with stellar, gas, and dark matter components, appropriately treating star formation and feedback. We chose the snapshot to have a morphology very similar to that seen in the HST image. The initial galaxy is a gSb model described in Combes (2008) and Chilingarian et al. (2010). We project the model on the sky with an inclination of  $26^{\circ}$  and a PA of  $15^{\circ}$ , which are compatible with the above

determinations. The resultant gas surface density and the velocity field are plotted in Fig. 5.

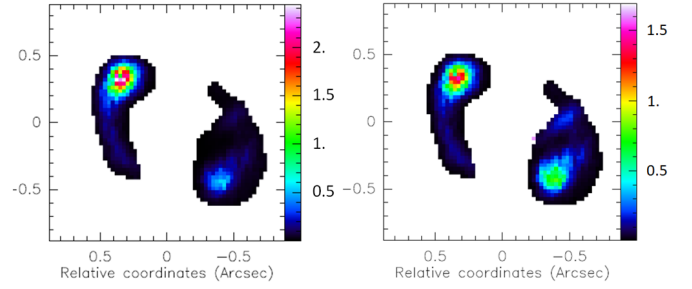
The 5 GHz image obtained using MERLIN (Multi-Element Radio Linked Interferometer Network) is among the best cm-wavelength continuum image of the radio source (Patnaik et al. 1993). Although the redshifted H I and OH line frequencies (750–900 MHz) are much lower, we used this high-resolution map with a synthesized beam of 0.1 arcsec as the base radio continuum model. Fortunately, the spectral index is not very steep between 400 MHz and 5 GHz (see multiple measurements between 4.8 GHz and 408 MHz with the Australia Telescope Compact Array i.e., ATCA and the Parkes telescope, in the NASA/IPAC Extragalactic Database; i.e., NED and Sect. 2), at least for the main images, although it could be steeper for the Einstein ring. We also compare the absorption spectra obtained at low frequencies with those in the millimeter domain, where the extent of continuum emission is very different because of the weaker Einstein ring component. The three compact images of the background quasar are also detected with ALMA with a beam of 0.056 arcsec (Muller et al. 2020). The adopted continuum maps for our cm- and mm-wave models are presented in Fig. A.1.

### 3.4.2. Computations of absorption maps and spectra

To reproduce the observations with the above continuum models, we built data cubes by projecting the models on the sky, with the fixed inclination and position angles, multiplying at each spatial pixel the gas surface density with the background continuum, and thereby computing the line-of-sight velocity distribution. We select the same spatial pixel sizes as the continuum maps, that is, 0.028 arcsec for the cm-wave, and 0.014 arcsec for the mm one (see Fig. A.1). The adopted spectral channels are of  $6.25 \text{ km s}^{-1}$  in width for both.

The main parameters to vary are related to the radial distribution of the various atomic and molecular species considered in the absorption maps and the spectra. The H I distribution is well known to be depleted at the center of spiral galaxies. There are some extreme examples, such as NGC 628, IC 342, M 83, M 101, and NGC 7331, with a central  $\text{H}_2/\text{H I}$  surface density ratio of  $\sim 100$  as can be seen in the THINGS H I (Walter et al. 2008) and the Heracles CO surveys (Leroy et al. 2009). Some of these radial distributions are computed in Casasola et al. (2017). We therefore selected an H I radial distribution depleted at the center, such that it gives more absorption weight to the NE(A) image with respect to the SW(B) image. Indeed, the distance of A from the center of the lensing galaxy is 5.3 kpc, while B is only at 2.4 kpc from the center (see also Sect. 1). The contribution to the absorption spectrum from B is towards the  $V = 0 \text{ km s}^{-1}$  component while A is contributing to the  $V = -150 \text{ km s}^{-1}$  component. The third image C and the average of the Einstein ring at cm wavelengths have a continuum contribution of the order of 1% of the flux density of A or B. We reiterate the fact that the flux densities of A and B are comparable.

For the H I component, we selected a power-law radial distribution, as  $f = (r/r_0)^\gamma$ , with a normalizing scale  $r_0 = 3.89 \text{ kpc}$ , equal to the Einstein ring radius. The gas surface density of the galaxy model was multiplied by this factor  $f$ , keeping the underlying bar and spiral structure as shown in Fig. 5. Different radial distributions will lead to different shapes of the total absorption spectrum and in particular different ratios between the two main velocity components. The best fit was obtained with  $\gamma = 2.5$ , which is very similar to the distributions selected by Koopmans & de Bruyn (2005).



**Fig. 6.** Maps of the product (arbitrary units) between the MERLIN continuum intensity and the optical depth from the galaxy model: *left*: for the H I line, where a central depletion was assumed for the best fit and *right*: for the OH-1667 MHz line, with a more concentrated distribution. The axes are labeled in arcseconds. We note a big difference in the SW component.

The velocity widths of H I components are due to two factors: first the intrinsic gas dispersion, and second the averages of all gas rotational velocities in the plane of the lens, seen along the line of sight towards the continuum emission. The strongest continuum sources are the images of the background quasar core, and their angular sizes are quite small ( $\sim \text{mas}$ ), indeed smaller than the synthesized beam sizes. However, the line of sight towards these core images traverses the inclined lens galaxy plane ( $i = 26^\circ$ ), which has a thickness  $h$ . Consequently, regions along  $h \times \tan(i) \sim 0.5 \times h$  are illuminated on the plane, with the corresponding velocity gradient. The width of the spectrum can therefore include velocity gradients over 0.1 arcsec, which is the resolution of the MERLIN continuum map. Hence, there is no need to deconvolve the continuum map for the model. Once the velocity gradients are taken into account, the simulated H I components are still too narrow, and it is necessary to add a velocity dispersion of  $\sigma_v = 45 \text{ km s}^{-1}$ . This might be due to extra-planar H I gas, which is frequently observed in nearby spiral galaxies in a layer of a few kiloparsecs in thickness, with lagging rotational velocity, and equivalent dispersion of up to  $30 \text{ km s}^{-1}$  (Marasco et al. 2019).

We also performed a similar computation for the OH 18 cm main lines, in particular the stronger 1667 MHz line, but with a more centrally concentrated radial distribution using a power-law index  $\gamma = 0.7$ . Although the OH does not suffer from the H I depletion towards the center (indeed, there is nothing like the phase change from H I to  $\text{H}_2$  at high density), the OH radical is still distributed in a thick plane like the H I, a plane which is flaring with radius, and hence increases the velocity coverage of the absorption. This motivates the choice of  $\sigma_v = 45 \text{ km s}^{-1}$  for OH as well and suggests that the OH might also be sharing the extra-planar H I layer. The resulting 2D maps and the spectra are shown in Figs. 6 and 8. The 2D maps indicate in particular the relative contributions of the various continuum regions in the absorption spectra.

Most of the absorption is coming from the lines of sight towards the core of the background source. To test the influence of the Einstein ring, whose flux could be higher at low frequency, we artificially boosted its continuum emission by factors of between three and ten with respect to the core images, but found no significant impact on the main line components. The various contributions of the different continuum components to the total absorption spectrum are presented in Fig. B.1. The ring is contributing a broad component. Although the ring contribution should be lower than 10% even at low frequency, it can broaden the H I and OH spectra and be responsible in part for

their wide wings. Another contribution to the wings may be the high-velocity clouds, which are discussed in Sect. 3.5.

### 3.5. Distribution of the gas absorbing the mm continuum

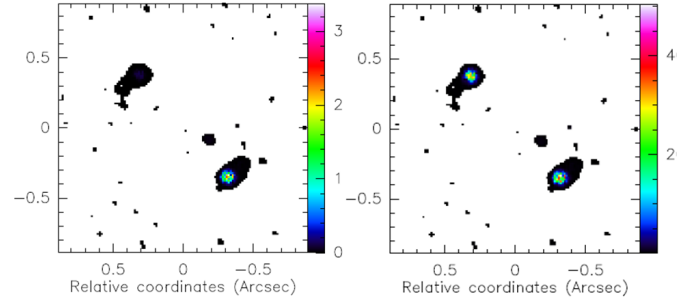
As mentioned earlier, the continuum emission at mm wavelengths is much more compact than at cm wavelengths, with all emission arising from the compact NE and SW images and little contribution from the ring. It is therefore interesting to compare the absorption spectra between the cm and mm domain, as this can give us constraints on the distribution of gas in the disk. For comparison, we take spectra of several species observed with ALMA, namely  $\text{HCO}^+$ ,  $\text{H}_2\text{O}$ ,  $\text{CH}^+$ , and  $\text{ArH}^+$  (see below and Muller et al. 2014, 2015, 2017).

The widths of the various velocity components are much narrower, and this could be due both to the smaller sizes of the core images, and the smaller thickness of the dense molecular gas plane. We therefore computed the model with twice more spatial resolution in linear size, that is, four times in area, using the ALMA continuum map, which fortunately also has a factor of two better spatial resolution (see Fig. A.1). To reproduce the observations, the intrinsic dispersion of the gas ( $6 \text{ km s}^{-1}$ ) in the  $N$ -body hydro simulation is sufficient, and an added convolution is not necessary. We attempt to reproduce absorption from  $\text{HCO}^+$ , which represents a generically mildly optically thick species, the  $\text{H}_2\text{O}$  molecule, which is a highly optically thick one, and  $\text{ArH}^+$ , which should be a tracer of the H I, but with a different continuum illumination than at cm wavelengths. The  $\text{ArH}^+$  absorption appears optically thin, but there is another species,  $\text{CH}^+$ , tracing a gas with intermediate molecular fraction, which is highly optically thick. The ALMA spectra, combined to a beam encompassing all the continuum emission, are represented in Fig. 9. Both  $\text{HCO}^+$  and  $\text{H}_2\text{O}$  have a highly concentrated radial distribution. We therefore selected the exponential profile, with a factor  $f = \exp(-\gamma r/r_0)$ , with the same  $r_0 = 3.89 \text{ kpc}$  as before. For the  $\text{HCO}^+$  and  $\text{H}_2\text{O}$  distribution, the best fit was obtained with an exponential law with  $\gamma = 2.5$ . The main difference in their profiles is due to their different optical thickness. In addition, for  $\text{H}_2\text{O}$ , it was necessary to deplete the central gas in front of the third image C in order to avoid an excessively broad absorption. Indeed, C is close to the galaxy center, and the velocity gradient at this location reached the maximum of  $220 \text{ km s}^{-1}$  in projection. The resulting 2D maps and the spectra are shown in Figs. 7 and 8.

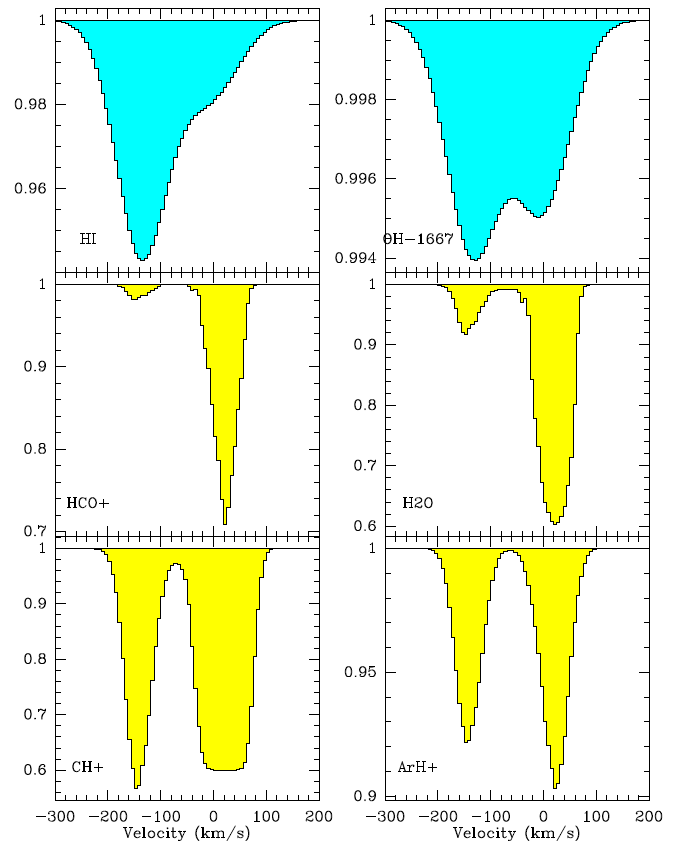
For the  $\text{CH}^+$  distribution, the best fit was obtained with an exponential of  $\gamma = 1.7$ , and for  $\text{ArH}^+$ ,  $\gamma = 0.1$ . The latter is more extended, with a distribution more similar to the atomic one. In addition, the velocity components are broader, and we selected a convolution width  $\sigma_v = 15 \text{ km s}^{-1}$ . The latter is three times less than the H I dispersion, but still higher than that of the molecular gas.

The profiles of Fig. 9 reveal small extra features with velocities lower than  $-200 \text{ km s}^{-1}$ , or higher than  $100 \text{ km s}^{-1}$ . These velocities do not exist in our galaxy model, and should come either from high-velocity clouds in the halo of the galaxy, or extra tidal arms coming from a possible galaxy interaction. The line of sight of PKS 1830–211 falls at low latitude towards the Galactic center ( $l, b = 12.2^\circ, -5.7^\circ$ ), and the region is too crowded to see tidal tails or a possible companion. It is possible that the broad H I components include these high-velocity clouds, and are the cause of the high-velocity dispersion required by the model.

In summary, there is a wide range of central concentrations for the various species, between  $\text{HCO}^+$ , the most concentrated



**Fig. 7.** Maps of the product (arbitrary units) between the ALMA continuum intensity and the optical depth from the galaxy model: *left*: for the  $\text{HCO}^+$  line, very similar to the  $\text{H}_2\text{O}$  case, both with a highly concentrated distribution and *right*: for the  $\text{ArH}^+$  line, with a more extended distribution (see text). The axes are labeled in arcseconds. We note a big difference in the NE component.



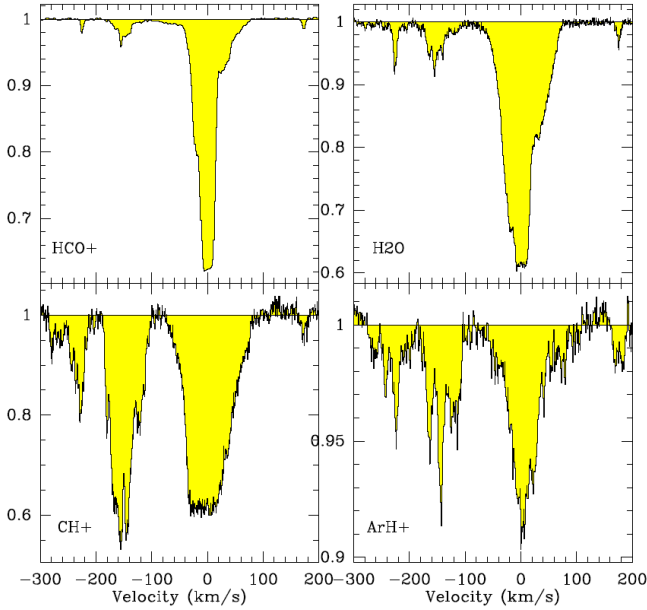
**Fig. 8.** Absorption line profiles derived from the model: the global spectrum has been computed over the whole continuum map, (*top*) for the H I and OH lines, (*middle*) the  $\text{HCO}^+$  and  $\text{H}_2\text{O}$  lines, and (*bottom*) for the  $\text{CH}^+$  and  $\text{ArH}^+$  lines. The spectra are normalized with the total continuum level (NE+SW+Einstein ring).

tracer, and H I the most extended. Furthermore, there is a large range of optical thickness and of gas layer height, implying a large range of velocity width, which could explain the various morphologies and intensities of spectral features.

## 4. Conclusions

The MALS LSP project on the MeerKAT array has carried out its first science verification observations in the  $UHF$ -band, covering the 580 to 1015 MHz frequency range. The brightest known





**Fig. 9.** Absorption lines obtained with ALMA towards PKS 1830–211, (top) for the HCO<sup>+</sup> (2014 Aug. 27) and H<sub>2</sub>O (2016 March 5) species and (bottom) for the CH<sup>+</sup> (2015 May 20) and ArH<sup>+</sup> (2015 May 19) species. The spectra are normalized by the total continuum level (NE+SW+Einstein ring). We assume a flux ratio between NE and SW images of 1.5.

radio lens, PKS 1830–211, was observed and detected with high signal-to-noise ratio ( $S/N \sim 4000$  in channels of  $6 \text{ km s}^{-1}$ ). While the H I 21 cm and OH main lines at  $z = 0.89$  were already known, thanks to the excellent sensitivity of MeerKAT we were also successful in detecting the OH 18 cm satellite lines.

We find that while the strength of the OH main lines is consistent with the LTE ratio, the satellite lines show conjugate behavior indicative of radiative pumping due to far-infrared radiation.

The OH emission component in the 1720 MHz line, although at only  $3\sigma$ , has a total line luminosity of  $6100 L_{\odot}$ , that is, about 20 times more luminous than the previously brightest known 1720 MHz maser associated with PKS 1413+135 at  $z = 0.247$  (Kanekar et al. 2004; Darling 2004). A detailed radiative model will be investigated further in the future, when the corresponding lines are re-observed with even higher S/Ns.

Contrary to the absorption features detected in several molecules at mm wavelengths peaking at  $V = 0 \text{ km s}^{-1}$  (i.e., the SW image), the main absorbing component at cm wavelengths is at a velocity of  $-150 \text{ km s}^{-1}$  with respect to  $z = 0.88582$ , corresponding to the NE image. We compared our spectrum with those previously obtained with the WSRT ( $S/N \sim 700$  with respect to the continuum and 35 at the peak of the line in Koopmans & de Bruyn 2005). The spectra reveal no variation, within an S/N of 35 relative to the depth of the absorption. Also, no variation was seen with respect to the ASKAP spectrum of Allison et al. (2017) with  $S/N \sim 1000$  with respect to the continuum and 50 at the peak of the line.

We built a realistic lens galaxy model from an  $N$ -body hydro simulation of an Sb-type galaxy developing a bar and spiral arms. The galaxy is projected to obtain a similar morphology to that seen in the HST image. Combining with the cm and mm continuum images of the background quasar obtained with best spatial resolution, we computed data cubes to simulate the observed absorption features. The H I and OH absorption

spectra are well reproduced with the main velocity field of the galaxy model. An intrinsic velocity dispersion of  $\sigma_v = 45 \text{ km s}^{-1}$  has to be added to account for the broad widths, which can be explained by the presence of an extra-planar H I and OH gas in addition to a thick and flaring plane. For the HCO<sup>+</sup> and H<sub>2</sub>O absorption lines, only the dispersion of  $6 \text{ km s}^{-1}$  coming from the simulated dense molecular gas is sufficient to account for the observed profiles. The molecular gas component is much more centrally concentrated, while the H I-component is depleted in the galaxy center. There is no need for any out-flow component coming from the galaxy plane. However, there are some distinct and faint extra features, which can be interpreted as high-velocity clouds. To account for the ArH<sup>+</sup> absorption lines observed with ALMA, a higher velocity dispersion ( $\sigma_v = 15 \text{ km s}^{-1}$ ) and a more extended distribution, similar to the atomic component, has to be selected.

**Acknowledgements.** We heartfully thank the SARAO’s team of engineers and commissioning scientists for years of intense and successful work towards delivering the wonderful MeerKAT telescope. We also thank the referee for helpful comments, that improved the clarity of the paper. The MeerKAT telescope is operated by the South African Radio Astronomy Observatory, which is a facility of the National Research Foundation, an agency of the Department of Science and Innovation. KM acknowledges support from the National Research Foundation of South Africa. The MeerKAT data were processed using the MALS computing facility at IUCAA (<https://mals.iucaa.in/releases>). The Common Astronomy Software Applications (CASA) package is developed by an international consortium of scientists based at the National Radio Astronomical Observatory (NRAO), the European Southern Observatory (ESO), the National Astronomical Observatory of Japan (NAOJ), the Academia Sinica Institute of Astronomy and Astrophysics (ASIAA), the CSIRO division for Astronomy and Space Science (CASS), and the Netherlands Institute for Radio Astronomy (ASTRON) under the guidance of NRAO. The National Radio Astronomy Observatory is a facility of the National Science Foundation operated under cooperative agreement by Associated Universities, Inc. We made use of the NASA/IPAC Extragalactic Database (NED).

## References

- Abdo, A. A., Ackermann, M., Ajello, M., et al. 2015, *ApJ*, **799**, 143
- Aller, M. C., Kulkarni, V. P., York, D. G., et al. 2012, *ApJ*, **748**, 19
- Allison, J. R., Moss, V. A., Macquart, J. P., et al. 2017, *MNRAS*, **465**, 4450
- Barnacka, A., Glicenstein, J. F., & Moudén, Y. 2011, *A&A*, **528**, L3
- Barnacka, A., Geller, M. J., Dell’Antonio, I. P., & Benbow, W. 2015, *ApJ*, **809**, 100
- Bhatnagar, S., Rau, U., & Golap, K. 2013, *ApJ*, **770**, 91
- Burton, W. B. 1976, *ARA&A*, **14**, 275
- Camilo, F., Scholz, P., Serylak, M., et al. 2018, *ApJ*, **856**, 180
- Casasola, V., Cassarà, L. P., Bianchi, S., et al. 2017, *A&A*, **605**, A18
- Chengalur, J. N., & Kanekar, N. 2003, *Phys. Rev. Lett.*, **91**, 241302
- Chengalur, J. N., de Bruyn, A. G., & Narasimha, D. 1999, *A&A*, **343**, L79
- Chilingarian, I. V., Di Matteo, P., Combes, F., Melchior, A. L., & Semelin, B. 2010, *A&A*, **518**, A61
- Combes, F. 2008, ArXiv e-prints [arXiv:0811.0153]
- Courbin, F., Lidman, C., Frye, B. L., et al. 1998, *ApJ*, **499**, L119
- Courbin, F., Meylan, G., Kneib, J. P., & Lidman, C. 2002, *ApJ*, **575**, 95
- Darling, J. 2003, *Phys. Rev. Lett.*, **91**, 011301
- Darling, J. 2004, *ApJ*, **612**, 58
- Darling, J., & Giovanelli, R. 2002, *AJ*, **124**, 100
- Elitzur, M. 1976, *ApJ*, **203**, 124
- Fryer, D. T., Seaquist, E. R., & Frail, D. A. 1998, *AJ*, **115**, 559
- Frye, B., Welch, W. J., & Broadhurst, T. 1997, *ApJ*, **478**, L25
- Garrett, M. A., Nair, S., Porcas, R. W., & Patnaik, A. R. 1997, *Vist. Astron.*, **41**, 281
- Guirado, J. C., Jones, D. L., Lara, L., et al. 1999, *A&A*, **346**, 392
- Gupta, N., Srianand, R., Baan, W., et al. 2017, ArXiv e-prints [arXiv:1708.07371]
- Gupta, N., Momjian, E., Srianand, R., et al. 2018a, *ApJ*, **860**, L22
- Gupta, N., Srianand, R., Farnes, J. S., et al. 2018b, *MNRAS*, **476**, 2432
- Gupta, N., Jagannathan, P., Srianand, R., et al. 2021, *ApJ*, **907**, 11
- Jagannathan, P., Bhatnagar, S., Rau, U., & Taylor, A. R. 2017, *AJ*, **154**, 56
- Jauncey, D. L., Reynolds, J. E., Tzioumis, A. K., et al. 1991, *Nature*, **352**, 132
- Jin, C., Garrett, M. A., Nair, S., et al. 2003, *MNRAS*, **340**, 1309



Jonas, J., & MeerKAT Team 2016, *Proceedings of MeerKAT Science: On the Pathway to the SKA*, 25–27 May, 2016 Stellenbosch, South Africa (MeerKAT2016), 1

Kanekar, N., & Chengalur, J. N. 2002, *A&A*, **381**, L73

Kanekar, N., Chengalur, J. N., & Ghosh, T. 2004, *Phys. Rev. Lett.*, **93**, 051302

Kanekar, N., Ghosh, T., & Chengalur, J. N. 2018, *Phys. Rev. Lett.*, **120**, 061302

Koopmans, L. V. E., & de Bruyn, A. G. 2005, *MNRAS*, **360**, L6

Leroy, A. K., Walter, F., Bigiel, F., et al. 2009, *AJ*, **137**, 4670

Li, D., Tang, N., Nguyen, H., et al. 2018, *ApJS*, **235**, 1

Lidman, C., Courbin, F., Meylan, G., et al. 1999, *ApJ*, **514**, L57

Liszt, H., & Lucas, R. 1996, *A&A*, **314**, 917

Lovell, J. E. J., Reynolds, J. E., Jauncey, D. L., et al. 1996, *ApJ*, **472**, L5

Lovell, J. E. J., Jauncey, D. L., Reynolds, J. E., et al. 1998, *ApJ*, **508**, L51

Marasco, A., Fraternali, F., Heald, G., et al. 2019, *A&A*, **631**, A50

Martí-Vidal, I., Muller, S., Combes, F., et al. 2013, *A&A*, **558**, A123

Mauch, T., Cotton, W. D., Condon, J. J., et al. 2020, *ApJ*, **888**, 61

Mohan, N., & Rafferty, D. 2015, *Astrophysics Source Code Library* [record ascl:1502.007]

Muller, S., & Guélin, M. 2008, *A&A*, **491**, 739

Muller, S., Beelen, A., Guélin, M., et al. 2011, *A&A*, **535**, A103

Muller, S., Combes, F., Guélin, M., et al. 2014, *A&A*, **566**, A112

Muller, H. S. P., Muller, S., Schilke, P., et al. 2015, *A&A*, **582**, L4

Muller, S., Müller, H. S. P., Black, J. H., et al. 2017, *A&A*, **606**, A109

Muller, S., Jaswanth, S., Horellou, C., & Martí-Vidal, I. 2020, *A&A*, **641**, L2

Nair, S., Narasimha, D., & Rao, A. P. 1993, *ApJ*, **407**, 46

Nair, S., Jin, C., & Garrett, M. A. 2005, *MNRAS*, **362**, 1157

Olling, R. P. 1996, *AJ*, **112**, 457

Oshima, T., Mitsuda, K., Ota, N., et al. 2001, *ApJ*, **551**, 929

Patnaik, A. R., Muxlow, T. W. B., & Jauncey, D. L. 1993, in *Liege International Astrophysical Colloquia*, eds. J. Surdej, D. Fraipont-Caro, E. Gosset, S. Refsdal, & M. Remy, 31, 363

Pramesh Rao, A., & Subrahmanyam, R. 1988, *MNRAS*, **231**, 229

Rau, U., & Cornwell, T. J. 2011, *A&A*, **532**, A71

Srianand, R., Gupta, N., Rahmani, H., et al. 2013, *MNRAS*, **428**, 2198

Tercero, B., Cernicharo, J., Cuadrado, S., de Vicente, P., & Guélin, M. 2020, *A&A*, **636**, L7

van Langevelde, H. J., van Dishoeck, E. F., Sevenster, M. N., & Israel, F. P. 1995, *ApJ*, **448**, L123

Walter, F., Brinks, E., de Blok, W. J. G., et al. 2008, *AJ*, **136**, 2563

Wiklind, T., & Combes, F. 1996, *Nature*, **379**, 139

Wiklind, T., & Combes, F. 1998, *ApJ*, **500**, 129

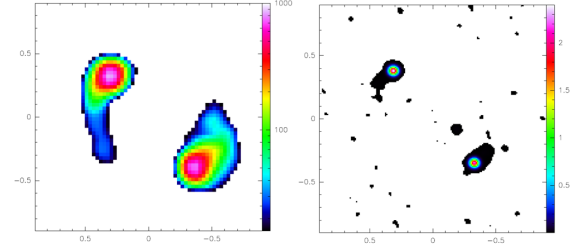
Wiklind, T., & Combes, F. 2001, in *Gravitational Lensing: Recent Progress and Future Go*, eds. T. G. Brainerd, & C. S. Kochanek, *ASP Conf. Ser.*, **237**, 155

Winn, J. N., Kochanek, C. S., McLeod, B. A., et al. 2002, *ApJ*, **575**, 103

Wolfe, A. M., Jorgenson, R. A., Robishaw, T., Heiles, C., & Prochaska, J. X. 2008, *Nature*, **455**, 638

## Appendix A: Continuum maps

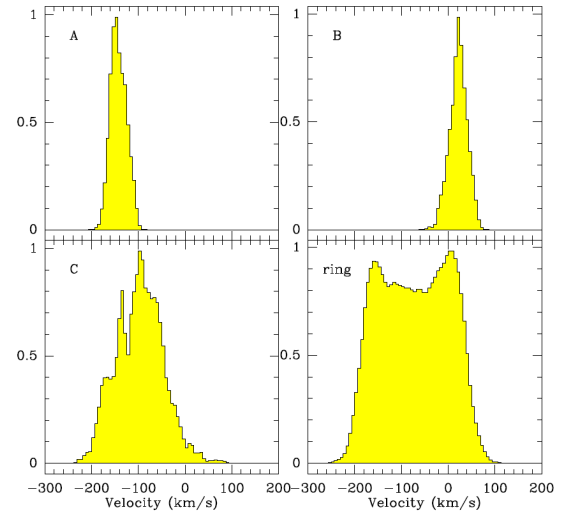
To model the continuum at cm and mm wavelengths, we adopted the MERLIN 5 GHz image from Patnaik et al. (1993), and the ALMA-Band 5 ( $\sim 180$  GHz) image from Muller et al. (2020) respectively, which are plotted in Fig. A.1. The resulting absorption lines depend essentially on the continuum distribution and not on their absolute values. There might be some variations with frequency, with a spectral index, which is not quite flat (see NED and Sect. 2), but these are of second order here.



**Fig. A.1.** Continuum maps of PKS 1830–211, used in the kinematical models: *Left*: continuum emission at 5 GHz with synthesized beam of  $0.1''$  (pixel size =  $0.028''$ ) measured by the MERLIN interferometer (Patnaik et al. 1993) and used for the H I and OH spectra (color wedge in mJy beam $^{-1}$ ). *Right*: continuum emission in Band 5 ( $\sim 180$  GHz) of ALMA (Muller et al. 2020), with beam  $0.056''$  (pixel size =  $0.014''$ ), used for HCO $^{+}$  and H $_2$ O lines (color wedge in Jy beam $^{-1}$ ). The axes are labeled in arcseconds.

## Appendix B: Spectra due to the different continuum components

To better understand relative contributions to absorption from different continuum images of the background quasar, we decompose the spectra in front of the following image components: the three images of the quasar core, and the Einstein ring (see Fig. B.1). All spectra in the figure are normalized to 1.



**Fig. B.1.** Spectral contributions of the different continuum sources: *top*: main quasar core images, A(NE) and B(SW); *bottom*: third image C, see Fig. 5, and the Einstein ring modeled as a constant continuum flux in the elliptical ring, schematically drawn in Fig. 5.