



## **Coulomb excitation of the vertical bar T-z vertical bar=1/2, A=23 mirror pair**

Downloaded from: <https://research.chalmers.se>, 2026-04-18 01:35 UTC

Citation for the original published paper (version of record):

Henderson, J., Hackman, G., Ruotsalainen, P. et al (2022). Coulomb excitation of the vertical bar T-z vertical bar=1/2, A=23 mirror pair. PHYSICAL REVIEW C, 105(3).  
<http://dx.doi.org/10.1103/PhysRevC.105.034332>

N.B. When citing this work, cite the original published paper.

Coulomb excitation of the  $|T_z| = \frac{1}{2}, A = 23$  mirror pair

J. Henderson<sup>1,2,3,\*</sup>, G. Hackman,<sup>2</sup> P. Ruotsalainen,<sup>4</sup> J. D. Holt,<sup>2,5</sup> S. R. Stroberg,<sup>2,6</sup> C. Andreoiu,<sup>7</sup> G. C. Ball,<sup>2</sup> N. Bernier,<sup>2,8,†</sup> M. Bowry,<sup>2,‡</sup> R. Caballero-Folch,<sup>2</sup> S. Cruz,<sup>2,8</sup> A. Diaz Varela,<sup>9</sup> L. J. Evitts,<sup>2,1,§</sup> R. Frederick,<sup>2</sup> A. B. Garnsworthy,<sup>2</sup> M. Holl,<sup>10,2,||</sup> J. Lassen,<sup>2</sup> J. Measures,<sup>2,1</sup> B. Olaizola,<sup>2,¶</sup> E. O'Sullivan,<sup>2</sup> O. Paetkau,<sup>2</sup> J. Park,<sup>2,8,#</sup> J. Smallcombe,<sup>2,11</sup> C. E. Svensson,<sup>9</sup> K. Whitmore,<sup>7</sup> and C. Y. Wu<sup>3</sup>

<sup>1</sup>Department of Physics, University of Surrey, Guildford GU2 7XH, England, United Kingdom

<sup>2</sup>TRIUMF, Vancouver, BC, Canada V6T 2A3

<sup>3</sup>Lawrence Livermore National Laboratory, Livermore, California 94550, USA

<sup>4</sup>University of Jyväskylä, Department of Physics, P.O. Box 35, University of Jyväskylä, Jyväskylä FI-40014, Finland

<sup>5</sup>Department of Physics, McGill University, 3600 Rue University, Montréal, QC, Canada H3A 2T8

<sup>6</sup>Department of Physics, University of Washington, Seattle, Washington 98195, USA

<sup>7</sup>Department of Chemistry, Simon Fraser University, Burnaby, BC, Canada V5A 1S6

<sup>8</sup>Department of Physics and Astronomy, University of British Columbia, Vancouver, Canada V6T 1Z1

<sup>9</sup>Department of Physics, University of Guelph, Guelph, ON, Canada N1G 2W1

<sup>10</sup>Department of Astronomy and Physics, Saint Mary's University, Halifax, Nova Scotia, Canada B3H 3C3

<sup>11</sup>Oliver Lodge Laboratory, University of Liverpool, Liverpool L69 7ZE, England, United Kingdom



(Received 4 January 2022; accepted 17 March 2022; published 28 March 2022)

**Background:** Electric-quadrupole ( $E2$ ) strengths relate to the underlying quadrupole deformation of a nucleus and present a challenge for many nuclear theories. Mirror nuclei in the vicinity of the line of  $N = Z$  represent a convenient laboratory for testing deficiencies in such models, making use of the isospin symmetry of the systems.

**Purpose:** Uncertainties associated with literature  $E2$  strengths in  $^{23}\text{Mg}$  are some of the largest in  $T_z = |\frac{1}{2}|$  nuclei in the  $sd$  shell. The purpose of the present paper is to improve the precision with which these values are known, to enable better comparison with theoretical models.

**Methods:** Coulomb-excitation measurements of  $^{23}\text{Mg}$  and  $^{23}\text{Na}$  were performed at the TRIUMF-ISAC facility using the TIGRESS spectrometer. They were used to determine the  $E2$  matrix elements of mixed  $E2/M1$  transitions.

**Results:** Reduced  $E2$  transition strengths,  $B(E2)$ , were extracted for  $^{23}\text{Mg}$  and  $^{23}\text{Na}$ . Their precision was improved by factors of approximately 6 for both isotopes, while agreeing within uncertainties with previous measurements.

**Conclusions:** A comparison was made with both shell-model and *ab initio* valence-space in-medium similarity renormalization group calculations. Valence-space in-medium similarity renormalization group calculations were found to underpredict the absolute  $E2$  strength, in agreement with previous studies.

DOI: [10.1103/PhysRevC.105.034332](https://doi.org/10.1103/PhysRevC.105.034332)

## I. INTRODUCTION

Electric-quadrupole ( $E2$ ) transitions strengths are a powerful probe of nuclear structure, relating directly to the

underlying quadrupole deformation of the nucleus. Simultaneously, they present a challenge to valence-space based theoretical models, with significant contributions to  $E2$  strength arising from particle-hole excitations out of the model space. In the vicinity of the line of  $N = Z$ , mirror nuclei (nuclei with inverted numbers of protons and neutrons) are an excellent laboratory for nuclear physics, with isospin symmetry enforcing analogous structures for both nuclei. Studies of transition strengths in isobaric analog transitions have been employed for a huge range of nuclei, from low-mass systems such as  $^7\text{Be}$  and  $^7\text{Li}$  [1], through the  $f_{7/2}$  shell (e.g., Ref. [2]), and extending into the upper  $fp$  and  $g_{9/2}$  model spaces (e.g., Ref. [3]).

Within the  $sd$  shell, one is able to compare modern *ab initio* techniques such as the valence-space in-medium similarity renormalization group (VS-IMSRG) to calculations utilizing exceptionally successful empirical shell-model interactions such as the USDB [4]. Systematic studies of deficiencies

\*jack.henderson@surrey.ac.uk

<sup>†</sup>Present address: Department of Physics and Astronomy, University of the Western Cape, Bellville 7535, South Africa.

<sup>‡</sup>Present address: University of the West of Scotland, Paisley, Scotland, United Kingdom.

<sup>§</sup>Present address: School of Computer Science and Electronic Engineering, Bangor University, Bangor, Gwynedd LL57 2DG, Wales, United Kingdom.

<sup>||</sup>Present address: Department of Physics, Chalmers University of Technology, SE-412 96 Göteborg, Sweden.

<sup>¶</sup>ISOLDE-EP, CERN, CH-1211 Geneva 23, Switzerland.

<sup>#</sup>Present address: Center for Exotic Nuclear Studies, Institute for Basic Science, Daejeon 34126, Republic of Korea.

in such models require, however, high-quality experimental data. In this paper, we build on our previous studies of  $^{22}\text{Mg}$  [5] and  $^{21}\text{Mg}$  [6] by presenting an improved experimental measurement of the low-lying  $E2$  strength in the  $|T_z| = \frac{1}{2}$ ,  $A = 23$  mirror pair,  $^{23}\text{Mg}$  and  $^{23}\text{Na}$ . Prior to the present paper, the  $B(E2)$  value between the ground and first excited state in  $^{23}\text{Mg}$  [7,8] was the most imprecisely measured of all  $T_z = -\frac{1}{2}$ ,  $sd$ -shell nuclei [9]. A detailed systematic study comparing VS-IMSRG and shell-model calculations to the available data within the  $sd$  shell is the subject of a separate publication [10].

The precision to which  $E2$  strengths are determined in odd-mass  $sd$ -shell nuclei is often limited by the fact that decays are of a mixed  $E2/M1$  nature. When the decay is dominated by  $M1$  strength, as is the case in  $^{23}\text{Mg}$  and  $^{23}\text{Na}$ , the leading uncertainty in determining the  $E2$  strength is typically the mixing ratio  $\delta$  between  $E2$  and  $M1$  contributions determined, for example, from the angular correlations between emitted  $\gamma$  rays. By performing a Coulomb excitation measurement, rather than determining the  $E2$  strength from the decay properties, this source of uncertainty can be largely eliminated, allowing for a higher level of precision.

## II. EXPERIMENTAL DETAILS

$^{23}\text{Mg}$  and  $^{23}\text{Na}$  were investigated through Coulomb excitation using the TIGRESS facility [11] at TRIUMF ISAC.  $^{23}\text{Mg}$  nuclei were produced by the impinging of 480-MeV protons onto a SiC ISAC target. The Mg atoms produced were then selectively laser ionized using three step resonant excitation (285.3 to 880.8 to 291.6 nm) into an autoionizing state and extracted.  $^{23}\text{Na}$  contamination was suppressed by the use of the ion-guide laser ion source (IG-LIS) [12]. A repeller plate is held at 40 V to suppress the extraction of surface-ionized contaminants by factors of up to  $10^6$ .  $^{23}\text{Na}$  ions were produced by the surface ion source of the TRIUMF offline ion source (OLIS) [13]. The beams were then accelerated by the TRIUMF ISAC accelerator chain and delivered to TIGRESS. The  $^{23}\text{Mg}/^{23}\text{Na}$  cocktail beam had an energy of 42.9 MeV, while the  $^{23}\text{Na}$  beam provided by OLIS was provided at energies of both 42.9 and 39.4 MeV. The total beam intensity for the  $^{23}\text{Mg}$  portion of the experiment was maintained at roughly  $3 \times 10^5$  particles per second—this includes a component from the remaining  $^{23}\text{Na}$  contamination. The  $^{23}\text{Na}$  beam intensity was maintained at approximately  $6 \times 10^7$  particles per second. The beams were then impinged onto a 0.44-mg/cm<sup>2</sup>-thick  $^{nat}\text{Ti}$  target at the center of the TIGRESS array. Scattered beamlike and targetlike nuclei were detected in an S3-type [14] silicon detector, mounted 31 mm downstream of the target position. Gamma rays were detected using the TIGRESS array, which for the present measurement was composed of 14 clover-type HPGe detectors. The high-purity germanium (HPGe) detectors were operated in their withdrawn configuration, with the face of the detectors 14.5 cm from the target and the bismuth germanate (BGO) suppression shields forward, providing the best possible peak-to-background ratio and Doppler correction.

While the use of IG-LIS heavily suppresses extraction of  $^{23}\text{Na}$ , a degree of contamination remains which was monitored in two ways. First, a Bragg detector was used to provide

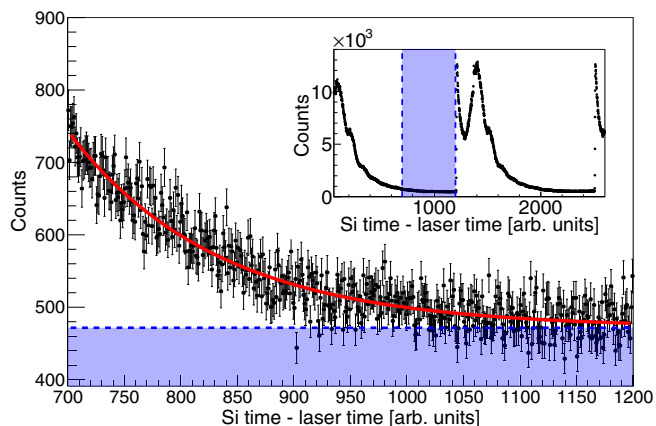


FIG. 1. Tail of the silicon-time laser-time distribution (see text for details), least-squares fit with an exponential plus constant background. The integral of the background is used to determine the surface ionized contamination originating from  $^{23}\text{Na}$ . Shown in the inset is the total time structure arising from the laser ionization in the present measurement with the fitted area indicated.

an instantaneous measure of the beam composition. While the composition is being determined in this way experimental data cannot be acquired. For the second method, the 10-kHz signal used to synchronize the laser ionization system was used, with every second pulse triggering the generation of a ramping waveform, which could then be digitized. The amplitude of the digitized waveform thereby gave a proxy for the time of the detection relative to the laser-ionization pulse and could thus be used to distinguish laser-ionized beam components which had a 10-kHz pulsed structure from the continuous surface ionized contaminants. This method allowed for a continuous determination of contamination, allowing us to monitor for sudden changes in the ISAC target behavior. Based on these analyses, the  $^{23}\text{Na}$  contribution to the beam cocktail was determined to be 15.2(9)% of the total, with the uncertainty being predominantly systematic and arising from the choice of fitting region. Figure 1 shows the laser timing distribution, the tail of which was fit with an exponential and baseline to determine the relative contributions to the beam cocktail.

## III. ANALYSIS

The data were unpacked using the GRSISORT [15] software package, built in a ROOT [16] framework. Gamma-ray events were Doppler corrected event by event on the basis of the beam and target kinematics determined from the hit location in the annular silicon detectors and whether the detected particle had beamlike or targetlike kinematic properties. Gamma-ray spectra for  $^{23}\text{Na}$  at 39.4 MeV and the  $^{23}\text{Mg} + ^{23}\text{Na}$  cocktail beam are shown in Figs. 2 and 3, respectively. Relative  $\gamma$ -ray detection efficiencies for TIGRESS were determined using a standard suite of  $^{152}\text{Eu}$ ,  $^{133}\text{Ba}$ , and  $^{60}\text{Co}$  sources.  $^{23}\text{Na}$  data were split into 48 groups: 12 angular bins for both beamlike and targetlike detection, repeated for both beam energies. The  $^{23}\text{Mg}$  data were binned in 12 groups, six

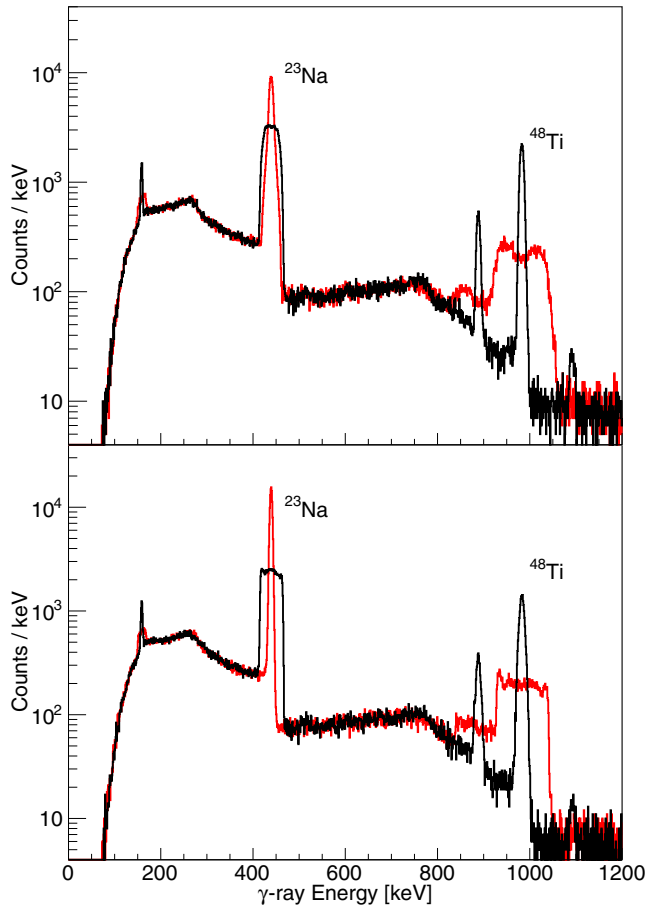


FIG. 2. Doppler-corrected  $\gamma$ -ray spectra on the basis of  $^{23}\text{Na}$  (red) and  $^{48}\text{Ti}$  (black) kinematics for a  $^{23}\text{Na}$  beam energy of 39.4 MeV. Top: Detection of a targetlike recoil ( $^{48}\text{Ti}$ ) in the downstream annular silicon detector. Bottom: Detection of a beamlike recoil ( $^{23}\text{Na}$ ) in the downstream annular silicon detector. The additional width of the  $^{23}\text{Na}$  peak in the top figure arises from the wide angles at which the scattering occurs, leading to significant slowing in the target material. Other lines in the titanium corrected (black) spectra arise from isotopes of titanium with a lower natural abundance than  $^{48}\text{Ti}$  (73.8%).

angular groups each for beamlike and targetlike scattering. Yields were adjusted for the natural abundance of  $^{48}\text{Ti}$ .

In the beamlike scattering data the  $^{23}\text{Mg}$  and  $^{23}\text{Na}$   $\gamma$ -ray lines were readily distinguished and were fitted individually, as shown in Fig. 4. The observed  $^{48}\text{Ti}$  yield was then adjusted for the observed  $^{23}\text{Na}$  component on the basis of the 42.9-MeV  $^{23}\text{Na}$  data. For the target scattering data the two components of the  $A = 23$   $\gamma$ -ray peak were not always distinguishable. The  $^{23}\text{Na}$  component was therefore determined and subtracted on the basis of the observed component in the beamlike scattering data and of the 42.9-MeV pure  $^{23}\text{Na}$  data taken with OLIS.  $^{23}\text{Na}$  contamination could thereby be handled empirically, without requiring assumptions about beam composition and minimizing the introduction of systematic uncertainties.

The Coulomb-excitation analysis was performed in the coupled-channels GOSIA2 code [17] used to simultaneously

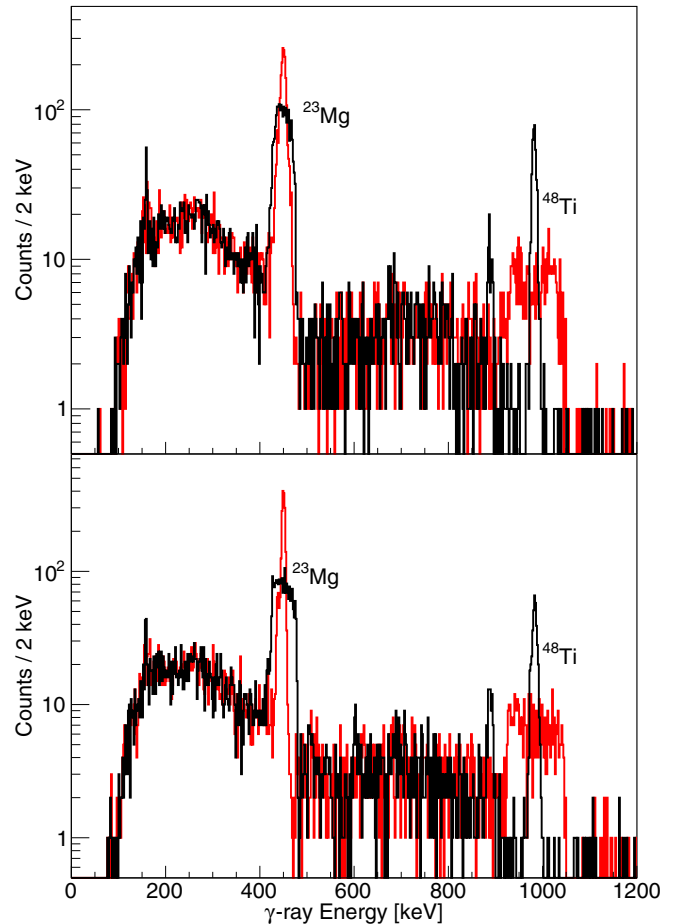


FIG. 3. As Fig. 2 but for a cocktail  $^{23}\text{Mg}$  ( $\approx 85\%$ ) and  $^{23}\text{Na}$  ( $\approx 15\%$ ) beam at an energy of 42.9 MeV.

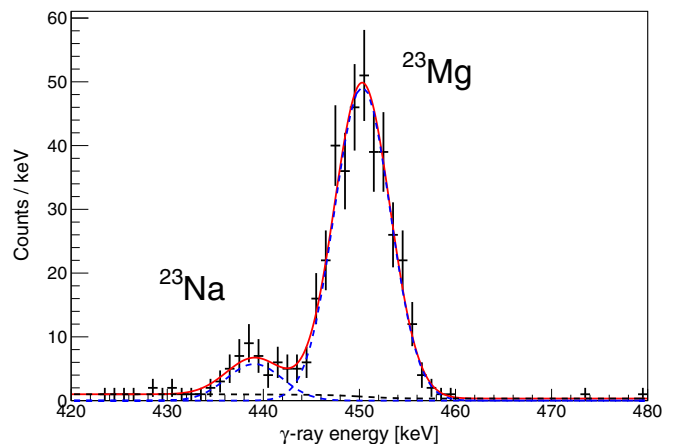


FIG. 4. Fit of the  $\gamma$ -ray peaks observed in TIGRESS corresponding to the deexcitation of the first excited state in  $^{23}\text{Mg}$  and the analog state in the stable contaminant and mirror nucleus,  $^{23}\text{Na}$ . These data were coincident with events from the first four rings of the downstream annular silicon detector, corresponding to angles of  $19.5^\circ$ – $25.8^\circ$ . This fitting method can be used for all cases where the beamlike particle was detected. See the text for details of the analysis for targetlike particle detection.

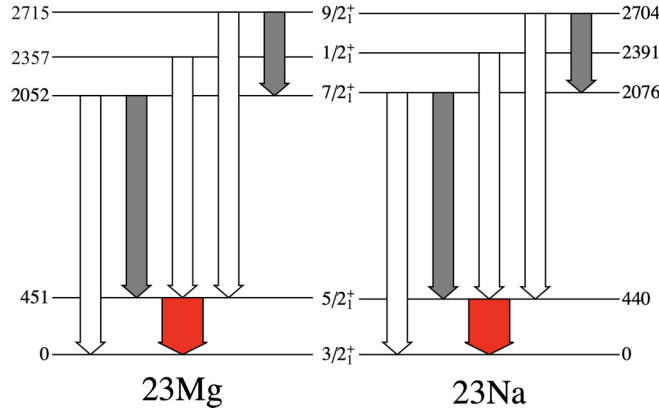


FIG. 5. Low-lying levels in  $^{23}\text{Mg}$  and  $^{23}\text{Na}$  relevant to the present analysis. The  $5/2^+ \rightarrow 3/2^+$  transition (red) was investigated and other transitions were included within the GOSIA analysis. Gray transitions indicate mixed  $E2/M1$ . Data taken from Ref. [9].

analyze beamlike and targetlike data. The levels included in the GOSIA2 analysis are shown in Fig. 5. Ground-state spectroscopic quadrupole moments for both  $^{23}\text{Na}$  and  $^{23}\text{Mg}$  were taken at their evaluated values [18]. For each beam all data were analyzed simultaneously, maximizing sensitivity. The  $\langle \frac{3}{2}^+ | E2 | \frac{5}{2}^+ \rangle$  and  $\langle \frac{5}{2}^+ | E2 | \frac{5}{2}^+ \rangle$  matrix elements were varied in order to construct  $\chi^2$  surfaces to incorporate any mutual dependence.  $\chi^2$  surfaces for  $^{23}\text{Mg}$  and  $^{23}\text{Na}$  are shown in Figs. 6 and 7, respectively. Little sensitivity was found to the diagonal matrix element beyond an indication of the sign in  $^{23}\text{Na}$ . Matrix elements to higher-lying states were fixed to their literature values during the minimization procedure, however their  $1\sigma$  limits were investigated to quantify any impact on the result and are incorporated as a systematic uncertainty.

#### IV. DISCUSSION

Extracted matrix elements are summarized in Table I, along with other properties derived from the present results.

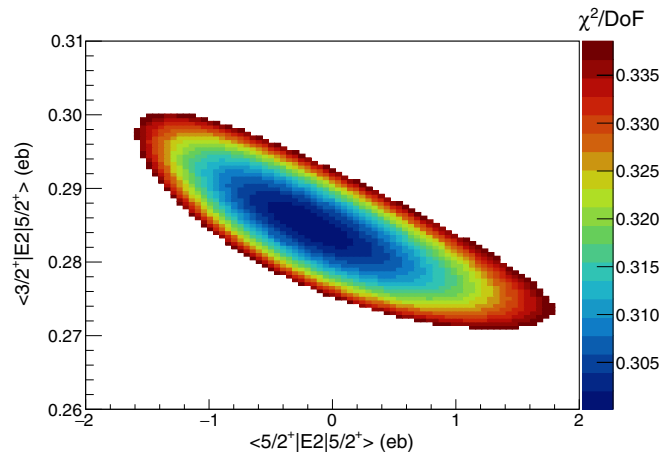


FIG. 6.  $\chi^2$  surface resulting from the GOSIA2 analysis of  $^{23}\text{Mg}$  from which transition and diagonal matrix elements were extracted.

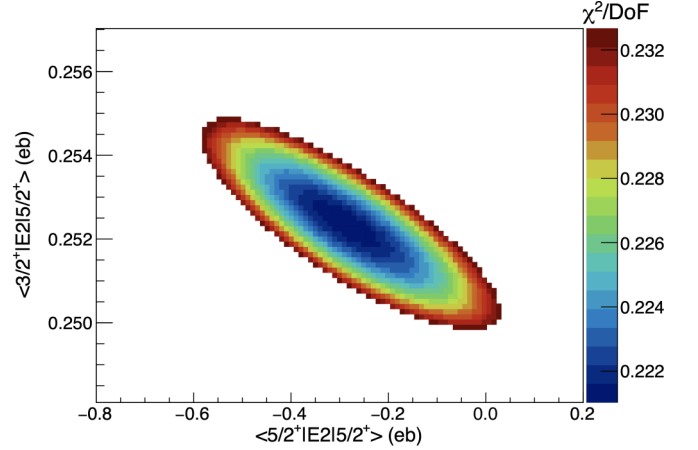


FIG. 7.  $\chi^2$  surface resulting from the GOSIA2 analysis of  $^{23}\text{Na}$  from which transition and diagonal matrix elements were extracted.

We compare the present results with those calculated from two theoretical models. VS-IMSRG calculations were performed using the EM1.8/2.0 interaction [19,20], which was generated by similarity renormalization group (SRG) evolution [21] of the chiral  $\text{N}^3\text{LO}$  NN interaction of Entem and Machleidt [22], and adding a nonlocally regulated  $\text{N}^2\text{LO}$  3N interaction with the low energy constants adjusted to reproduce the triton binding energy and the  $^4\text{He}$  matter radius. Calculations are performed in a harmonic oscillator basis of  $\hbar\omega = 20$  MeV with  $2n + \ell \leq e_{\text{max}} = 12$  and with a truncation on the three-body matrix elements  $e_1 + e_2 + e_3 \leq E_{3\text{max}} = 16$ . All operators are truncated at the normal-ordered two-body level. A diagonalization was then performed using the NUSHELLX [23] code. Shell-model calculations were also performed in NUSHELLX, making use of the USDB interaction [4] with effective charges of  $e_\pi = 1.36$  and  $e_\nu = 0.45$ .

TABLE I.  $E2$  matrix elements,  $B(E2)$  values, spectroscopic quadrupole moments, and mixing ratios deduced from the present paper with statistical and systematic uncertainties quoted, in that order. Where available, literature values are shown for comparison. Mixing ratios were deduced on the basis of the literature lifetimes and the presently determined  $B(E2)$  values.

$^{23}\text{Na}$	This paper	Literature	Ref.
$\langle \frac{3}{2}^+   E2   \frac{5}{2}^+ \rangle$ eb	$0.252 \pm 0.003 \pm 0.004$	$0.237^{+0.014}_{-0.015}$	[9]
$B(E2; \frac{5}{2}^+ \rightarrow \frac{3}{2}^+) e^2 \text{fm}^4$	$106 \pm 3 \pm 3$	$93 \pm 12$	[9]
$\langle \frac{5}{2}^+   E2   \frac{5}{2}^+ \rangle$ eb	$-0.29^{+0.32}_{-0.29} \pm 0.05$		
$Q_s(\frac{5}{2}^+) \text{ eb}$	$-0.22^{+0.25}_{-0.22} \pm 0.04$		
$\delta_{E2/M1}^2$	$0.0038 \pm 0.0004$	$0.0034^{+0.0004}_{-0.0003}$	[9]
$^{23}\text{Mg}$			
$\langle \frac{3}{2}^+   E2   \frac{5}{2}^+ \rangle$ eb	$0.285 \pm 0.015 \pm 0.004$	$0.23^{+0.07}_{-0.10}$	[9]
$B(E2; \frac{5}{2}^+ \rightarrow \frac{3}{2}^+) e^2 \text{fm}^4$	$135^{+15}_{-14} \pm 4$	$86 \pm 58$	[9]
$\langle \frac{5}{2}^+   E2   \frac{5}{2}^+ \rangle$ eb	$-0.2^{+2.0}_{-1.3} \pm 0.05$		
$Q_s(\frac{5}{2}^+) \text{ eb}$	$-0.15^{+1.50}_{-1.00} \pm 0.04$		
$\delta_{E2/M1}^2$	$0.0056 \pm 0.0006$	$0.0036^{+0.0028}_{-0.0020}$	[9]

TABLE II.  $B(E2)$  values determined in the present paper compared to those calculated using the VS-IMSRG method and the nuclear shell model using the USDB interaction.

Isotope	$B(E2) \downarrow (e^2 \text{fm}^4)$				
	$J_i^\pi$	$J_f^\pi$	Expt.	VS-IMSRG	USDB
$^{23}\text{Mg}$	$\frac{5}{2}_1^+$	$\frac{3}{2}_1^+$	135 (15)	75.2	117.3
$^{23}\text{Na}$	$\frac{5}{2}_1^+$	$\frac{3}{2}_1^+$	106 (4)	56.9	109.1

Table II shows the present results compared to those calculated using the aforementioned models. The shell-model (USDB) calculations well reproduce the observed  $B(E2)$  values. VS-IMSRG values, meanwhile, are considerably lower than the experimentally determined ones. This deficiency is consistent with that observed in our previous studies of  $|T_z| = 1$  mirror pairs [5]. While the VS-IMSRG values are deficient, it should be noted that the relative  $B(E2)$  strengths are better reproduced by the *ab initio* calculations. Defining the ratio  $R = \frac{B(E2_{\frac{5}{2}^+ \rightarrow \frac{3}{2}^+})(^{23}\text{Mg})}{B(E2_{\frac{5}{2}^+ \rightarrow \frac{3}{2}^+})(^{23}\text{Na})}$ , we find that  $R_{\text{exp}} = 1.27(14)$ , whereas  $R_{\text{USDB}} = 1.06$  and  $R_{\text{VS-IMSRG}} = 1.34$ . In order to understand the relative behavior of  $E2$  strengths across mirror pairs, a systematic study is required, which is the subject of a separate work [10].

## V. CONCLUSIONS

$^{23}\text{Mg}$  and  $^{23}\text{Na}$  have been studied by Coulomb excitation using particle- $\gamma$  coincidences at TRIUMF-ISAC. The relative insensitivity of the Coulomb excitation methodology to the  $M1$  transitions which dominate the decay of the first excited states allowed for the extraction of  $E2$  transition strengths with superior precision to that previously achieved, while

agreeing within uncertainties with literature values. Calculations were performed, employing both the shell model with the USDB interaction, and the *ab initio* VS-IMSRG methodology. Consistent with previous work, it was found that the VS-IMSRG calculations significantly underpredict the  $E2$  transition strength. A detailed, systematic investigation of deficiencies in  $E2$  strength from VS-IMSRG calculations is the subject of a separate study [10].

## ACKNOWLEDGMENTS

The authors would like to thank the TRIUMF beam delivery group for their efforts in providing high-quality stable and radioactive beams. This work has been supported by the Natural Sciences and Engineering Research Council of Canada, The Canada Foundation for Innovation, and the British Columbia Knowledge Development Fund. TRIUMF receives federal funding via a contribution agreement through the National Research Council of Canada. Computations were performed with an allocation of computing resources on Cedar at WestGrid and Compute Canada, and on the Oak Cluster at TRIUMF managed by the University of British Columbia department of Advanced Research Computing. Work at Lawrence Livermore National Laboratory was performed under Contract No. DE-AC52-07NA27344. This work was supported by the Office of Nuclear Physics, U.S. Department of Energy, under Grant No. desc0018223 (NUCLEI SciDAC-4 collaboration) and by ORNL Field Work Proposal No. ERKBP72. S.R.S. is supported by the U.S. Department of Energy under Contract No. DE-FG02-97ER41014. J.H. is supported at the University of Surrey under UKRI Future Leaders Fellowship Grant No. MR/T022264/1. Figure 5 was created using the SciDraw scientific figure preparation system [24]. The codes IMSRG++ [25] and NUTBAR [26] used in this paper make use of the Armadillo library [27].

- [1] S. L. Henderson, T. Ahn, M. A. Caprio, P. J. Fasano, A. Simon, W. Tan, P. O'Malley, J. Allen, D. W. Bardayan, D. Blankstein, B. Frentz, M. R. Hall, J. J. Kolata, A. E. McCoy, S. Moylan, C. S. Reingold, S. Y. Strauss, and R. O. Torres-Isea, *Phys. Rev. C* **99**, 064320 (2019).
- [2] A. Boso, S. Milne, M. Bentley, F. Recchia, S. Lenzi, D. Rudolph, M. Labiche, X. Pereira-Lopez, S. Afara, F. Ameil, T. Arici, S. Aydin, M. Axiotis, D. Barrientos, G. Benzoni, B. Birkenbach, A. Boston, H. Boston, P. Boutachkov, A. Bracco, A. Bruce, B. Bruyneel, B. Cederwall, E. Clement, M. Cortes, D. Cullen, P. Désesquelles, Z. Dombrádi, C. Domingo-Pardo, J. Eberth, C. Fahlander, M. Gelain, V. González, P. John, J. Gerl, P. Golubev, M. Górška, A. Gottardo, T. Grahm, L. Grassi, T. Habermann, L. Harkness-Brennan, T. Henry, H. Hess, I. Kojouharov, W. Korten, N. Lalović, M. Lettmann, C. Lizarazo, C. Louchart-Henning, R. Menegazzo, D. Mengoni, E. Merchan, C. Michelagnoli, B. Million, V. Modamio, T. Moeller, D. Napoli, J. Nyberg, B. Nara Singh, H. Pai, N. Pietralla, S. Pietri, Z. Podolyak, R. Perez Vidal, A. Pullia, D. Ralet, G. Rainovski, M. Reese, P. Reiter, M. Salsac, E. Sanchis, L. Sarmiento, H. Schaffner, L. Scruton, P. Singh, C. Stahl, S. Uthayakumar, J. Valiente-Dobón, and O. Wieland, *Phys. Lett. B* **797**, 134835 (2019).
- [3] C. Morse, H. Iwasaki, A. Lemasson, A. Dewald, T. Braunroth, V. Bader, T. Baugher, D. Bazin, J. Berryman, C. Campbell, A. Gade, C. Langer, I. Lee, C. Loelius, E. Lunderberg, F. Recchia, D. Smalley, S. Stroberg, R. Wadsworth, C. Walz, D. Weisshaar, A. Westerberg, K. Whitmore, and K. Wimmer, *Phys. Lett. B* **787**, 198 (2018).
- [4] B. A. Brown and W. A. Richter, *Phys. Rev. C* **74**, 034315 (2006).
- [5] J. Henderson, G. Hackman, P. Ruotsalainen, S. Stroberg, K. Launey, J. Holt, F. Ali, N. Bernier, M. Bentley, M. Bowry, R. Caballero-Folch, L. Evitts, R. Frederick, A. Garnsworthy, P. Garrett, B. Jigmeddorj, A. Kilic, J. Lassen, J. Measures, D. Muecher, B. Olaizola, E. O'Sullivan, O. Paetkau, J. Park, J. Smallcombe, C. Svensson, R. Wadsworth, and C. Wu, *Phys. Lett. B* **782**, 468 (2018).
- [6] P. Ruotsalainen, J. Henderson, G. Hackman, G. H. Sargsyan, K. D. Launey, A. Saxena, P. C. Srivastava, S. R. Stroberg, T. Grahm, J. Pakarinen, G. C. Ball, R. Julin, P. T. Greenlees, J. Smallcombe, C. Andreoiu, N. Bernier, M. Bowry, M. Buckner, R. Caballero-Folch, A. Chester, S. Cruz, L. J. Evitts, R. Frederick, A. B. Garnsworthy, M. Holl, A. Kurkjian, D. Kisliuk, K. G. Leach, E. McGee, J. Measures, D. Muecher, J. Park, F. Sarazin, J. K. Smith, D. Southall, K. Starosta, C. E. Svensson,

- K. Whitmore, M. Williams, and C. Y. Wu, *Phys. Rev. C* **99**, 051301(R) (2019).
- [7] E. K. Warburton, J. J. Kolata, and J. W. Olness, *Phys. Rev. C* **8**, 1385 (1973).
- [8] P. Tikkanen, J. Keinonen, K. Arstila, A. Kuronen, and B. H. Wildenthal, *Phys. Rev. C* **42**, 581 (1990).
- [9] NNDC, Evaluated Nuclear Structure Data File (ENSDF), 2022.
- [10] S. R. Stroberg, J. Henderson, G. Hackman, P. Ruotsalainen, G. Hagen, and J. Holt, *Phys. Rev. C* **105**, 034333 (2022).
- [11] G. Hackman and C. E. Svensson, *Hyperfine Int.* **225**, 241 (2014).
- [12] S. Raeder, H. Heggen, J. Lassen, F. Ames, D. Bishop, P. Bricault, P. Kunz, A. Mjøs, and A. Teigelhofer, *Rev. Sci. Instrum.* **85**, 033309 (2014).
- [13] K. Jayamanna, F. Ames, G. Cojocar, R. Baartman, P. Bricault, R. Dube, R. Laxdal, M. Marchetto, M. MacDonald, P. Schmor, G. Wight, and D. Yuan, *Rev. Sci. Instrum.* **79**, 02C711 (2008).
- [14] Micron Semiconductor, Ltd., Micron catalogue, 2019.
- [15] GRSISort, <https://github.com/GRIFFINCollaboration/GRSISort/> (2022).
- [16] R. Brun and F. Rademakers, *Nucl. Instr. Meth. in Phys. Res. A* **389**, 81 (1997).
- [17] T. Czosnyka, D. Cline, and C. Y. Wu, *Bull. Am. Phys. Soc.* **28**, 745 (1983).
- [18] N. J. Stone, *At. Data Nucl. Data Tables* **111**, 1 (2016).
- [19] K. Hebeler, S. K. Bogner, R. J. Furnstahl, A. Nogga, and A. Schwenk, *Phys. Rev. C* **83**, 031301(R) (2011).
- [20] J. Simonis, K. Hebeler, J. D. Holt, J. Menéndez, and A. Schwenk, *Phys. Rev. C* **93**, 011302(R) (2016).
- [21] S. K. Bogner, R. J. Furnstahl, and R. J. Perry, *Phys. Rev. C* **75**, 061001(R) (2007).
- [22] D. R. Entem and R. Machleidt, *Phys. Rev. C* **68**, 041001(R) (2003).
- [23] B. A. Brown and W. D. M. Rae, *Nucl. Data Sheets* **120**, 115 (2014).
- [24] M. Caprio, *Comput. Phys. Commun.* **171**, 107 (2005).
- [25] <https://github.com/ragnarstroberg/imsrg> (2022).
- [26] <https://github.com/ragnarstroberg/nutbar> (2022).
- [27] C. Sanderson, Technical Report, NICTA, 2010.