



**CHALMERS**  
UNIVERSITY OF TECHNOLOGY

## **The radio detection and accretion properties of the peculiar nuclear transient AT 2019avd**

Downloaded from: <https://research.chalmers.se>, 2024-05-06 00:28 UTC

Citation for the original published paper (version of record):

Wang, Y., Baldi, R., Del Palacio, S. et al (2023). The radio detection and accretion properties of the peculiar nuclear transient AT 2019avd. *Monthly Notices of the Royal Astronomical Society*, 520(2): 2417-2435. <http://dx.doi.org/10.1093/mnras/stad101>

N.B. When citing this work, cite the original published paper.

# The radio detection and accretion properties of the peculiar nuclear transient AT 2019avd

Yanan Wang<sup>1</sup>,<sup>1</sup>★ Ranieri D. Baldi<sup>1,2</sup>, Santiago del Palacio,<sup>3</sup> Muryel Guolo,<sup>4</sup> Xiaolong Yang,<sup>5,6</sup> Yangkang Zhang<sup>5</sup>, Chris Done,<sup>7</sup> Noel Castro Segura<sup>1</sup>, Dheeraj R. Pasham,<sup>8</sup> Matthew Middleton,<sup>2</sup> Diego Altamirano,<sup>1</sup> Poshak Gandhi<sup>1</sup>, Erlin Qiao,<sup>9</sup> Ning Jiang<sup>10</sup>, Hongliang Yan,<sup>9</sup> Marcello Giroletti<sup>11</sup>, Giulia Migliori<sup>12</sup>, Ian McHardy,<sup>1</sup> Francesca Panessa<sup>11</sup>, Chichuan Jin<sup>9,12</sup>, Rongfeng Shen<sup>13</sup> and Lixin Dai<sup>14</sup>

<sup>1</sup>Physics & Astronomy, University of Southampton, Southampton, Hampshire SO17 1BJ, UK

<sup>2</sup>INAF - Istituto di Radioastronomia, Via P. Gobetti 101, I-40129 Bologna, Italy

<sup>3</sup>Department of Space, Earth and Environment, Chalmers University of Technology, SE-412 96 Gothenburg, Sweden

<sup>4</sup>Department of Physics and Astronomy, Johns Hopkins University, 3400 N. Charles St., Baltimore MD 21218, USA

<sup>5</sup>Shanghai Astronomical Observatory, Key Laboratory of Radio Astronomy, Chinese Academy of Sciences, Shanghai 200030, China

<sup>6</sup>Shanghai Key Laboratory of Space Navigation and Positioning Techniques, Shanghai Astronomical Observatory, CAS, Shanghai 200030, China

<sup>7</sup>Centre for Extragalactic Astronomy, Department of Physics, University of Durham, South Road, Durham DH1 3LE, UK

<sup>8</sup>Kavli Institute for Astrophysics and Space Research, Massachusetts Institute of Technology, Cambridge MA 02139, USA

<sup>9</sup>National Astronomical Observatories, Chinese Academy of Sciences, 20A Datun Road, Beijing 100101, China

<sup>10</sup>CAS Key laboratory for Research in Galaxies and Cosmology, Department of Astronomy, University of Science and Technology of China, Hefei 230026, China

<sup>11</sup>INAF - Istituto di Astrofisica e Planetologia Spaziali, via del Fosso del Cavaliere 100, I-00133 Roma, Italy

<sup>12</sup>School of Astronomy and Space Sciences, University of Chinese Academy of Sciences, 19A Yuquan Road, Beijing 100049, China

<sup>13</sup>School of Physics and Astronomy, Sun Yat-Sen University, Zhuhai 519082, China

<sup>14</sup>Department of Physics, University of Hong Kong, Pokfulam Road, Hong Kong, China

Accepted 2023 January 6. Received 2023 January 6; in original form 2022 August 2

## ABSTRACT

AT 2019avd is a nuclear transient detected from infrared to soft X-rays, though its nature is yet unclear. The source has shown two consecutive flaring episodes in the optical and the infrared bands, and its second flare was covered by X-ray monitoring programs. During this flare, the UVOT/*Swift* photometries revealed two plateaus: one observed after the peak and the other one appeared  $\sim 240$  d later. Meanwhile, our *NICER* and *XRT/Swift* campaigns show two declines in the X-ray emission, one during the first optical plateau and one 70–90 d after the optical/UV decline. The evidence suggests that the optical/UV could not have been primarily originated from X-ray reprocessing. Furthermore, we detected a timelag of  $\sim 16$ –34 d between the optical and UV emission, which indicates the optical likely comes from UV reprocessing by a gas at a distance of 0.01–0.03 pc. We also report the first VLA and VLBA detection of this source at different frequencies and different stages of the second flare. The information obtained in the radio band – namely a steep and a late-time inverted radio spectrum, a high brightness temperature and a radio-loud state at late times – together with the multiwavelength properties of AT 2019avd suggests the launching and evolution of outflows such as disc winds or jets. In conclusion, we propose that after the ignition of black hole activity in the first flare, a super-Eddington flaring accretion disc formed and settled to a sub-Eddington state by the end of the second flare, associated with a compact radio outflow.

**Key words:** accretion, accretion discs – black hole physics – galaxies: active – galaxies: nuclei – radio continuum: transients.

## 1 INTRODUCTION

The sample of nuclear transients has shot up in recent years as more survey telescopes have been put into operation, such as the Zwicky Transient Facility (ZTF; Bellm et al. 2019) and the all sky automated survey super nova (ASASSN; Shappee et al. 2014) in optical bands, and *eROSITA* (Predehl et al. 2021) in soft X-rays.

Active galactic nuclei (AGN) generally show low variability on long time-scales spanning from months to years. Transients discovered in the vicinity of supermassive black holes (SMBHs) instead show more extreme phenomenology, e.g. ‘changing-look’ AGN (CLAGN; e.g. Matt, Guainazzi & Maiolino 2003; LaMassa et al. 2015; Guolo et al. 2021; Ricci et al. 2021), Narrow-line Seyfert 1 galaxies (NLSy1; e.g. Boller, Brandt & Fink 1996; Komossa 2008a), tidal disruption events (TDEs; e.g. Komossa & Bade 1999; van Velzen et al. 2021; Hammerstein et al. 2022), and supernovae (SNe; e.g. Ulvestad & Antonucci 1997; Mattila & Meikle 2001; Villarreal et al. 2017).

\* E-mail: [Y.Wang@soton.ac.uk](mailto:Y.Wang@soton.ac.uk)

Additionally, some other types of nuclear transients that show exotic phenomenology have also been discovered, such as quasi-periodic eruptions with high-amplitude X-ray bursts recurring every few hours/days (Miniutti et al. 2019; Giustini, Miniutti & Saxton 2020; Arcodia et al. 2021), and sudden ignition of optical-UV emission with strong double-peaked emission lines and with a decline rate much slower than in TDEs (Tadhunter et al. 2017; Gromadzki et al. 2019; Trakhtenbrot et al. 2019).

A TDE has been predicted to occur when a star passes inside the tidal radius of a SMBH (Hills 1975; Rees 1988). Such events can result in a months-to-years-long flare with an extreme multiwavelength variability (see Gezari 2021 for a recent review on TDEs). Although the first few TDEs were detected by *ROSAT* in X-rays (Komossa & Bade 1999), most of the TDEs discovered in the literature are UV/optically selected. In only around a dozen cases, they are bright in both optical and X-ray bands, with an X-ray-to-optical luminosity ratio around the peak of the X-ray emission of either  $\sim 1$  or  $> 1$  when a jet is present (Auchettl, Guillochon & Ramirez-Ruiz 2017). In other cases, they are bright either in optical/UV bands (e.g. PS1–10jh, Gezari et al. 2012; ASAS-SN14ae, Holoien et al. 2014) or in X-rays exclusively, or they peak in optical/UV bands with faint/no X-ray detection first, but later peak/brighten in X-rays with a time delay of months to years (e.g. D3–13, Gezari et al. 2006; ASASSN-14li, Pasham et al. 2017; ASASSN-15oi, Gezari, Cenko & Arcavi 2017; OGLE16aaa, Shu et al. 2020; AT2019azh/ASASSN-19dj, Hinkle et al. 2021). The latter case results in a large optical-to-X-ray ratio of 1 to 1000 – or even higher when no X-ray emission is detected – that significantly evolves with time (Gezari et al. 2017).

Such diversity of TDE flaring phenomena have motivated several theoretical models. Metzger & Stone (2016) proposed a reprocessing model in which the X-ray emission from the inner disc is mostly suppressed at early times and the X-rays can only escape after the obscuring material is completely ionized. Alternatively, Gezari et al. (2017) suggested that the late-time brightening of the X-ray emission could be due to the delayed accretion through a newly forming debris disc. Dai et al. (2018) and Curd & Narayan (2019) emphasized the viewing angle effects on TDE flares, suggesting X-ray bright TDEs are observed through a low-density funnel region whereas the optical/UV bright TDEs are observed through the disc edge where X-rays are reprocessed into optical/UV emission by the outer disc or the optically thick outflows. Furthermore, Wen et al. (2020) proposed a slimming disc with a near edge-on configuration whose X-ray emission increases as more of the inner disc region is exposed to the observer. Recently, Mummery (2021) proposed a unified model of disc-dominated TDEs and they showed that the peak Eddington ratio of the disc is a decisive parameter of the observed properties of TDEs.

Radio and infrared (IR) emission have also been detected in follow-up observations of TDEs (or candidates). For the former, these sources show a wide range of radio luminosities of  $10^{37}$ – $10^{42}$  erg s $^{-1}$ , which can originate from jets (Bloom et al. 2011; Zauderer et al. 2011; Berger et al. 2012; Cenko et al. 2012; Irwin et al. 2015; Mattila et al. 2018; Pasham & van Velzen 2018), winds (Alexander et al. 2016), or unbound tidal debris streams interacting with the surrounding circumnuclear medium (Krolik et al. 2016; Matsumoto & Piran 2021; also see Alexander et al. 2020 for a review). For the latter, IR emission is generally interpreted as optical/UV/soft X-ray radiation being reprocessed by dust within a few sub-pc of the central SMBH, with a covering factor of  $\sim 0.01$  (Jiang et al. 2016, 2021; van Velzen et al. 2016; van Velzen et al. 2021). The dust echo are an important tool for studying the circumnuclear environment of galaxies, down to sub-pc scales, and for measuring the bolo-

metric luminosity ( $L_{\text{bol}}$ ) of TDEs (van Velzen et al. 2016; Gezari 2021).

The diversity of multiband emitting TDEs has also complicated their distinction from other sources such as SNe and active SMBHs (Zabludoff et al. 2021). SNe can occur in the centre of a galaxy as well (Ulvestad & Antonucci 1997; Mattila & Meikle 2001; Villarroel et al. 2017), and variable AGNs – such as CLAGN and NLSy1 – may also show explosive changes in luminosity on time-scales of months to years (Yan et al. 2019; Frederick et al. 2021). The identification of TDEs may be even more difficult when a TDE takes place in a pre-existing AGN (see Chan et al. 2019 for hydrodynamic simulations of a debris stream colliding with a pre-existing accretion disc; Ricci et al. 2020).

### 1.1 The transient: AT 2019avd

AT 2019avd (also known as eRASSJ082337+042303 or ZTF19aaiqmg1), located at  $z = 0.028$ , is a nuclear transient that flared in IR, optical/UV, and X-ray wavelengths. Its optical emission was first detected by ZTF on 2019, February 9 (Nordin et al. 2019), spatially associated with the quiescent galaxy 2MASX J08233674+0423027 (Alam et al. 2015). The long-term ZTF light curve shows two extraordinary consecutive optical flaring episodes lasting over two years in total. The X-ray flare was first detected by *SRG/eROSITA* on 2020, April 28 during the rising phase of the second optical flare (Malyali et al. 2020). The concurrent optical and X-ray luminosity evolution (with multiple rising and drops) of the source makes it a rather unique nuclear transient. The source shows evolving optical spectral lines and Bowen fluorescent lines (Malyali et al. 2021). The SMBH mass estimated from empirical relations (virial mass method and host-BH mass relation), and from the single-epoch mass-estimation technique are  $10^{6.1-7.2} M_{\odot}$  (Frederick et al. 2021) and  $10^{6.3 \pm 0.3} M_{\odot}$  (Malyali et al. 2021), respectively. We will adopt the latter value throughout this work.

Part of the IR, optical/UV and X-ray data from *Wide-field Infrared Survey Explorer* (*WISE*; Wright et al. 2010), ZTF, *UVOT/Swift*, and *XRT/Swift* campaigns of AT 2019avd have been reported in Malyali et al. (2021), Frederick et al. (2021), and Chen, Dou & Shen (2022). Malyali et al. (2021) concluded that its X-ray properties are consistent with TDEs but the optical/UV emission are not TDE-like. Frederick et al. (2021) argued against a TDE origin based on its optical photometry and, instead, suggested a flaring NLSy1 type of transient with significant He II and N III profiles. Chen et al. (2022) proposed a two phase model in which AT 2019avd is caused by the partial disruption of a star by a SMBH, and the two optical flares are due to stream circularization and delayed accretion, respectively. Here we include new and archival observations from ZTF, *Swift*, and *WISE*, together with new data from *NICER*.<sup>1</sup> More importantly, we also report the first radio detection of this target with the Karl Guthe Jansky Very Large Array (VLA) and Very Long Baseline Array (VLBA).

## 2 MULTIWAVELENGTH OBSERVATIONS AND DATA REDUCTION

We adopt a flat  $\Lambda$ CDM cosmology with  $H_0 = 67.4$  km s $^{-1}$  Mpc $^{-1}$  and  $\Omega_m = 0.315$  from Planck Collaboration et al. (2020), which implies a luminosity distance of  $D \sim 130$  Mpc.

<sup>1</sup>We only include the *NICER* light curve in this work. A detailed study of the temporal and spectral properties of the X-rays of AT 2019avd with the *NICER* data will be presented in Wang et al. (in prep).

## 2.1 ZTF

ZTF monitored AT 2019avd in the  $r$  and the  $g$  bands from 2019, January 12 to 2021, May 4. The ZTF light curves are downloaded from the Lasair alert broker.<sup>2</sup> We apply Galactic extinction correction on both bands using  $E(B - V) = 0.022$  (Schlafly & Finkbeiner 2011).

## 2.2 UVOT

*Swift* performed 51 target-of-opportunity (ToO) observations on this target from 2020, May 13 to 2022, May 26, which add up to a total exposure time of 56.4 ks with good time intervals. The task UVOTIMSUM was applied to sum all the exposures when more than one snapshot was included in each individual filter data. The task UVOTSOURCE was run to extract magnitudes from aperture photometry. To allow a consistent subtraction of the host contribution to the UVOT bands, a circular region of the size of the host's Petrosian radius, 10 arcsec, centred at the target position was chosen for the source and another region of 40 arcsec located at a nearby position was used to estimate the background emission. The target was observed with all/some of the six filters, *UVW2* (central wavelength, 1928 Å), *UVM2* (2246 Å), *UVW1* (2600 Å), *U* (3465 Å), *B* (4392 Å), and *V* (5468 Å) in different observations. The UVOT magnitudes have been host-subtracted (see Appendix A), and corrected for Galactic extinction.

## 2.3 WISE

To investigate the mid-infrared (MIR) variability of AT 2019avd, we employed photometric data of the *W1* (3.4 μm) and *W2* (4.6 μm) bands from *WISE*. Multi-epoch data was gathered from the reactivation *NEOWISE* mission (Mainzer et al. 2014) data base using the *NEOWISE*-R Single Exposure (L1b) Source Table on the NASA/IPAC Infrared Science Archive (IRSA)<sup>3</sup> with a matching radius of 2 arcsec. *NEOWISE* visits a particular field in the sky every six months and at each visit three observations are performed, each a couple of days apart. We binned the photometric data into  $\sim \pm 15$  d to obtain a representative magnitude in each visit. To remove poor-quality data, only the photometry flagged with *cc\_flags* = 0, *qual\_frame* > 0, *qi\_fact* > 0, *saa\_sep* > 0, and *moon\_masked* = 0 were averaged after  $3\sigma$  clipping in a single visit. Following Lyu, Rieke & Smith (2019), we evaluated the magnitude uncertainty for each epoch as follows:

$$\sigma_{\text{epoch}}^2 = \frac{1}{N-1} \sum_{i=1}^N (m_i - \overline{m}_{\text{epoch}})^2 + \frac{1}{N^2} \sum_{i=1}^N \sigma_{i,\text{pho}}^2 + \frac{1}{N} \sigma_{\text{ss}}^2, \quad (1)$$

where  $m_i$  and  $\sigma_{i,\text{pho}}$  denote the magnitude and its uncertainty at each observation, respectively, in the Vega magnitude system;  $\overline{m}_{\text{epoch}}$  denotes the mean magnitude at each epoch; and  $\sigma_{\text{ss}}$  denotes the system stability ( $\sim 0.016$  mag for *NEOWISE*).

## 2.4 VLA

The transient was observed in the  $X$ -band with the VLA in C-array configuration on 2020, May 25th (Project 20A-514; PI: Baldi), during the second optical flaring episode. The target was observed at the central frequency of 10 GHz and with a bandwidth of 4 GHz for 18 min bracketed between scans of the secondary (phase) calibrator,

which was observed for 1.5 min. The scans of the absolute flux density scale calibrator (3C 138) were performed at the end of the scheduling block for 4.5 min. The data calibration and reduction procedure were performed with the calibration pipeline within the Common Astronomy Software Application (CASA 5.4.1 version; McMullin et al. 2007). After calibration, the plots were inspected for residual interference. For the image reconstruction, the TCLEAN task in CASA was used. We used the *mtmfs* deconvolver mode, which allows to reconstruct images from visibilities using a multiterm (multiscale) multifrequency approach (Rau & Cornwell 2011) with two Taylor coefficients in the spectral model (*nterms* = 2). We produced full resolution maps considering the Briggs (1995) initial weighting algorithm with robustness parameter equal to 0.5, which ensures a balance between resolution and sensitivity. The restoring clean beam size is  $3.2 \times 1.7$  arcsec and the final radio map reaches an rms of  $8.5 \mu\text{Jy beam}^{-1}$ . The top panel of Fig. 1 shows the 10-GHz map of AT 2019avd, and reveals an unresolved component with a peak brightness  $279.2 \pm 5.5 \mu\text{Jy beam}^{-1}$ . Further details are provided in Table 1.

Due to the low statistics, it was not possible to extract an in-band spectral index image using CASA. Therefore we split the 4-GHz bandwidth of the  $X$ -band data set into two sets of visibilities 2-GHz wide centred at 9.04 and 11.06 GHz. We also tried to further divide the 4-GHz bandwidth in three frequency bins centred at 8.6, 9.9, and 11.3 GHz. Unfortunately, large flux uncertainties prevented from deriving an accurate spectrum profile modelled with the CASA task UVMODELFIT, so we do not consider this further splitting reliable and focus only on the former one (9.04–11.06 GHz).

## 2.5 VLBA

The target was observed by VLBA at  $L$ - (1.4 GHz) and  $C$ -band (5 GHz) (Project BW142A & B; PI: Wang) during the optical and the  $X$ -ray luminosity drops. The full VLBA antennas includes BR (Brewster), FD (Fort Davis), HN (Hancock), KP (Kitt Peak), LA (Los Alamos), MK (Mauna Kea), NL (North Liberty), OV (Owens Valley), PT (Pie Town), and SC (Saint Croix). The  $L$ -band observation (BW142A) was made on 2021, 22th June, lasting 2 hr, during which 9 VLBA antennas participated (OV out due to maintenance). For the  $C$ -band observation (BW142B) performed on 2021, 22th August, all the 10 VLBA antennas joined the 4-hr observation (HN out for about 1 hr due to the extreme weather). Both observations were recorded at 2 Gbps data rate (32 MHz, 8 IF per pol) with dual polarization. Phase referencing mode was applied for both epochs and the bright calibrator J0825+0309 ( $1.35^\circ$  from the target) was used as the phase calibrator. The scheduled phase-referencing nodding cycle was set to 7 min long with 5 min on the target and 2 min on the calibrator, which yields total on-source times of 80 and 160 min at  $L$  and  $C$  band, respectively.

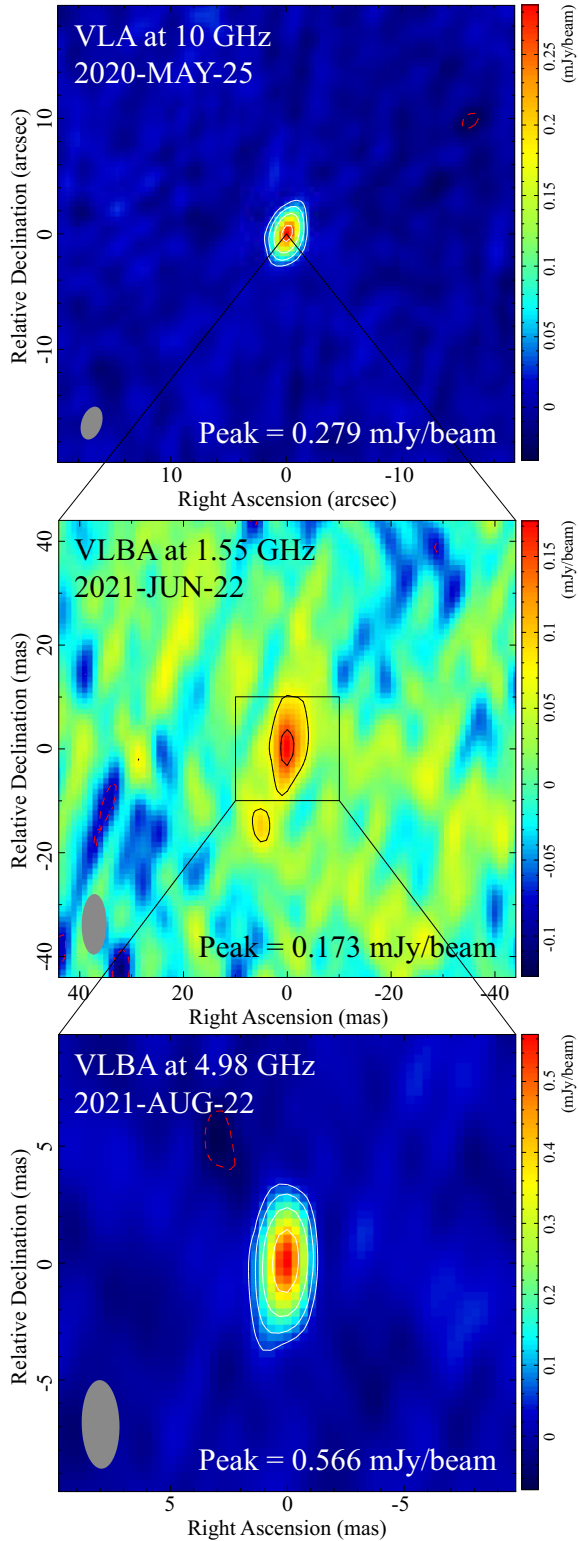
After observation, the data recorded in each antenna were transferred to the DiFX correlators in Socorro, USA (Deller et al. 2011), for correlation with an integration time of 2 s. After correlation, the visibility data were downloaded by the user and imported into the AIPS software for further calibration (Greisen 2003). The standard calibration procedure of VLBA data were applied according to the AIPS COOKBOOK.<sup>4</sup> At first, the corrections for the ionosphere and Earth Orientation effect were conducted by the AIPS tasks VLBAEPCR and VLBAEOPS. The AIPS task APCAL was performed to calibrate the amplitudes for each antenna taking advantage of

<sup>2</sup><https://lasair.roe.ac.uk/object/ZTF19aaimgl/>

<sup>3</sup><https://irsa.ipac.caltech.edu/>

<sup>4</sup><http://www.aips.nrao.edu/cook.html>





**Figure 1.** High-resolution images of AT 2019avd derived from the VLA X band (top panel) and VLBA *L* and *C* bands (middle and bottom panels, respectively) observations. The image information (beam sizes, rms, etc.) is given in Table 1. The positive contours are plotted in white and black, and the negative contours are plotted in red. Contour levels are  $3\sigma \times (-1, 1, 2, 4, 8)$ , with  $\sigma$  the rms noise.

the weather condition for the opacity correction. For the phase calibration, a step of manual calibration on the fringe finder scan and a following step of global fringe fitting for the phase calibrator were performed using the AIPS task FRING. Finally, the antenna-based bandpass was solved out of the calibrators and applied to the visibility data with the task BPASS.

The calibrated visibility data were then exported and imported into the Caltech Difmap software (DIFMAP; Shepherd 1997) for self-calibration and imaging. We first did cleaning and phase-only self-calibration to image the phase calibrator J0825+0309, generated the final cleaned map and loaded it into AIPS for another phase calibration FRING. This step calibrates the residual phase errors caused by the extended structure of the phase calibrator. Then the final phase solutions were interpolated into the target, and split for final imaging in DIFMAP. During the imaging of the target source, no self-calibration steps were used due to the weakness of the target source.

The middle and bottom panels of Fig. 1 depict the VLBA maps of AT 2019avd in *L* and *C* bands with angular resolutions of  $11.7 \times 4.8$  and  $3.7 \times 1.6 \text{ mas}^2$ , respectively. The source was detected at both 1.6 and 5 GHz with a signal-to-noise ratio above  $5\sigma$  (rms of 25 and  $16 \mu\text{Jy beam}^{-1}$ , respectively). The VLBA core position is consistent with the VLA detection (within the VLA beam, see Table 1). The VLBA peak brightnesses are 0.173 and  $0.566 \text{ mJy beam}^{-1}$  for 1.6 and 5 GHz, respectively, corresponding to signal-to-noise ratios  $\sim 7$  and 35, respectively. The uncertainties in the peak brightness and the total flux density are calculated by combining the systematic uncertainty and the rms value.

### 3 MULTIWAVELENGTH TEMPORAL EVOLUTION

The upper panel of Fig. 2 shows the long-term evolution of the multiwavelength emission detected with ZTF, *Swift*, *NICER*, *WISE*, and VLA/VLBA. ZTF detected two optical flaring episodes in the *r* and *g* bands, marked with the red and green dots in the upper panel of Fig. 2: the first one, approximately from MJD 58523 to 58785, shows a sharp peak and the second one, starting from MJD 58849, shows more complex features with a duration at least twice as long as the first one. Specifically, the second flare shows a plateau of nearly constant luminosity for at least 106 d (from MJD 59124 to 59230). Before the plateau, there is a five month observational gap – from MJD 58972 to 59124, due to the Sun constraints – that makes it unclear when the second flare peaked. After the plateau, the optical luminosity decreases abruptly by a factor of more than three in approximately 106 d.

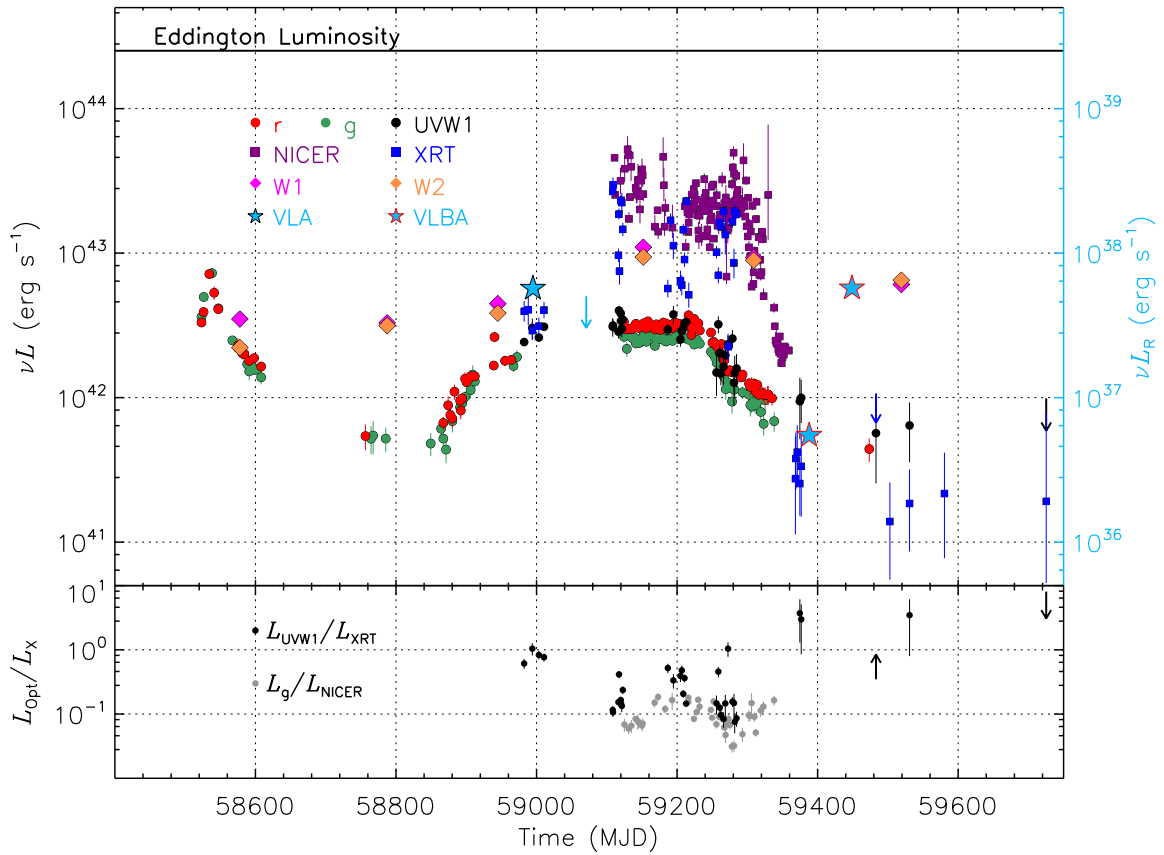
The first UVOT observation was triggered about 133 d (MJD 58982) after the start of the second flare. For clarity, we only show the *UVW1* photometry in the upper panel of Fig. 2, which is the most frequently used UV filter in our *Swift* campaign. The *UVW1* photometry is comparable to the ZTF-*r* and -*g* bands, revealing an identical behaviour of the UV to that of the optical emission. However, the B and V magnitudes maintain at the host galaxy level, rather constant during the flare. We show the UVOT photometry in all the six bands in Fig. A1 with a comparison to the magnitude of the host galaxy. After the seasonal gap in 2021, the late-time UV emission shows a second plateau around MJD 59473 to 59580.

Since MJD 59110, *NICER* started performing high-cadence monitoring of AT 2019avd on a nearly daily basis. For both *XRT* and *NICER*, the X-ray spectrum is very soft (peaking around 0.1 keV) and is dominated by the background at energies above 2 keV. The *NICER* and *XRT* luminosities – shown as purple and blue squares,

**Table 1.** Radio observations of AT2019 avd.

Instrument	$\nu$	$\Delta\nu$	MJD	$\alpha$ (J2000)	$\delta$ (J2000)	$\theta_M \times \theta_m$	PA	rms	$F_{\text{peak}}$	$F_{\text{tot}}$
FIRST	1.4	0.042	51955.0	—	—	—	—	146	<438	—
VLA	3.0	2	58075.0	—	—	—	—	130	<390	—
VLA	3.0	2	59070.8	—	—	—	—	169	<506	—
VLA	10.0	4	58994.9	08:23:36.764	04:23:02.481	$1.10 \times 0.57$ arcsec	6.7	8.5	$279 \pm 10$	$322 \pm 14$
VLA	9.0 <sup>‡</sup>	2	—	08:23:36.764	04:23:02.434	$1.45 \times 0.87$ arcsec	11	10	$300 \pm 12$	$373 \pm 14$
VLA	11.1 <sup>‡</sup>	2	—	08:23:36.762	04:23:02.427	$1.13 \times 0.27$ arcsec	8.5	10	$247 \pm 11$	$266 \pm 13$
VLBA	1.55	0.256	59387.9	08:23:36.7666	04:23:02.5032	$11.7 \times 4.8$ mas <sup>2</sup>	−0.91	25	$173 \pm 26$	$170 \pm 38$
VLBA	4.98	0.256	59448.8	08:23:36.7666	04:23:02.5037	$3.7 \times 1.6$ mas <sup>2</sup>	1.44	16	$566 \pm 35$	$625 \pm 38$

*Note.* Column description: (1) instrument, (2) central frequency (GHz), (3) bandwidth (GHz); (4) MJD observation date; (5–6) coordinates of the radio centre position (J2000.0); (7) deconvolved FWHM dimensions (major  $\times$  minor axes,  $\theta_M \times \theta_m$ ) of the fitted component, determined from an elliptical Gaussian fit; (8) PA of the deconvolved components (degree); (9) rms of the radio map close to the specific component ( $\mu\text{Jy beam}^{-1}$ ); (10) peak brightness in  $\mu\text{Jy beam}^{-1}$ ,  $F_{\text{peak}}$ ; (11) integrated flux density,  $F_{\text{tot}}$ , in  $\mu\text{Jy}$  derived from the CASA Gaussian fitting of the radio core. <sup>‡</sup> indicates that we divided the 10 GHz VLA observation (4-GHz wide) into two sub-bands (2-GHz wide).



**Figure 2.** *Upper:* Temporal evolution of multiwavelength luminosity of AT 2019avd. The left y-axis shows the multiband luminosities ( $\text{erg s}^{-1}$ ) except for the radio-band luminosities which are plotted on the right y-axis. The unabsorbed X-ray luminosities in the 0.3–2 keV energy range are taken from Wang et al. (in prep). The radio data are observed, from left to right, at 10 and 3 GHz with VLA, and at 1.6 and 5 GHz with VLBA. *Lower:* The evolution of the optical-to-X-ray ratio. In both panels, the arrows indicate the limit of the detection at  $3\sigma$  confidence level.

respectively, in the upper panel of Fig. 2 – are taken from Wang et al. (in prep), who obtained the fluxes by fitting the *NICER* and the *XRT* spectra. Due to the same seasonal gap around the peak period of the optical flare, it is unclear whether we have captured the peak of the flare in X-rays. However, the X-ray luminosity increased over one order of magnitude after the gap, reaching  $L_X \sim 6.5 \times 10^{43} \text{ erg s}^{-1}$  on MJD 59110.

Later, the X-ray luminosity temporarily decreased by a factor of 6 in 100 d and increased by a factor of 3 in the next 120 d.

It then decreased significantly by over one order of magnitude since MJD 59300, roughly 70 d after the drop in the optical flare. Before another seasonal gap between MJD 59400 and 59500, *Swift* was able to monitor AT 2019avd for a few days more than *NICER* without the contamination from the Sun glare. Compared to the X-ray peak on MJD 59110, the X-ray luminosity on MJD 59368–59377 dropped by over two orders of magnitude, which is consistent with the luminosity observed after the gap.

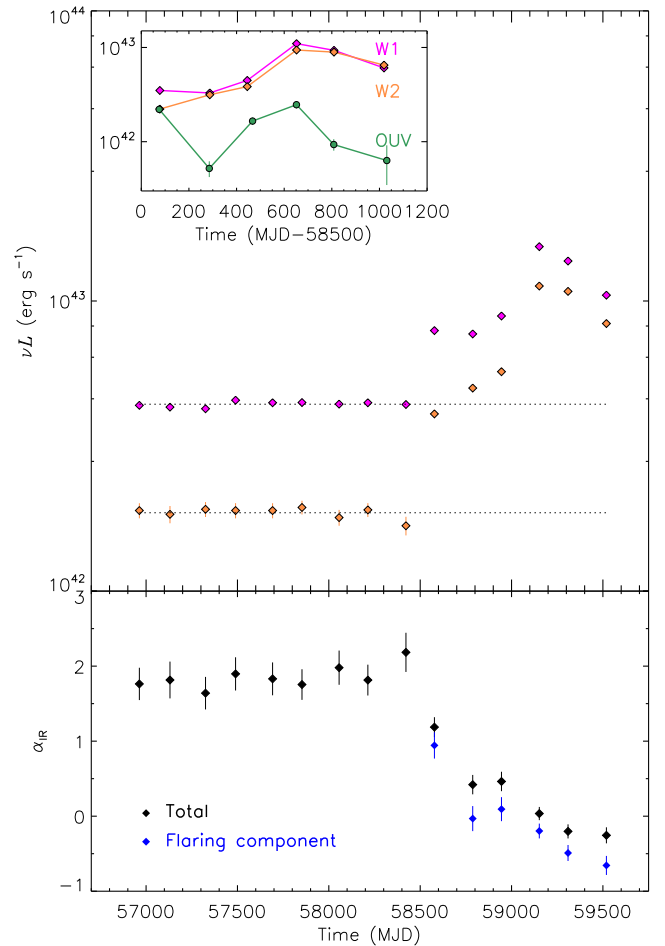
It is clear from Fig. 2 that the optical decay starts earlier than the X-ray decline, with the latter exhibiting a faster decay. To quantify the delay between the optical and X-ray decay, we use the discrete correlation function (DCF; Edelson & Krolik 1988), and use the bootstrapping technique (e.g. Ivezić et al. 2014) to determine the error. In this calculation we have only included the *NICER* and ZTF data between MJD 59100 and 59338, quoted values for the lag and its confidence interval are the median and the 16th and 84th quantile of the 5000 trials bootstrapped distribution. This yields a lag of the X-rays with respect to the optical bands of  $\tau_{g-X} = 78^{+9}_{-12}$  d and  $\tau_{r-X} = 67^{+15}_{-18}$  d for the *g* and *r* filters, respectively.

To study the relative changes of the optical/UV and the X-ray flares, we calculated the optical/UV-to-X-ray ratio with the data of either ZTF and *NICER* or *UVW1* and *XRT*, respectively. As shown in the bottom panel of Fig. 2, the luminosity ratio varies between 0.03 and 0.19 during the main body of the flare from MJD 59110 to 59338; this ratio is  $\sim 1$  in the period prior to the peak and increases to up to  $\sim 10$  at late times. These ratios are consistent with those obtained by measuring the fluxes from fitting the X-ray and optical-UV SEDs.

In the radio band, we searched for pre-flare radio observations from public radio surveys at different frequencies and angular resolutions, namely the Faint Images of the Radio Sky (FIRST; Becker, White & Helfand 1995), NRAO VLA Sky Survey (NVSS; Condon et al. 1998), TIFR GMRT Sky Survey (TGSS; Intema et al. 2017), VLA Sky Survey (VLASS; Lacy et al. 2020), and LOFAR Two-metre Sky Survey (LOTSS; Shimwell et al. 2017). The source was not detected in any of these radio surveys prior to the 2019 optical flare: the VLA surveys, FIRST in 2001 and VLASS in 2017, give a  $3\sigma$  upper limit of the radio flux density of  $0.44 \text{ mJy beam}^{-1}$  at 1.4 GHz and  $0.39 \text{ mJy beam}^{-1}$  at 3 GHz, respectively. Then, we detect radio emission in the position of the transient at the second optical flare with our VLA observation. In addition, there is a VLASS observation 75 d later (MJD 59070), which reveals the presence of a very weak component whose peak brightness ( $0.475 \text{ mJy beam}^{-1}$ ) is slightly below the  $3\sigma$  upper limit,  $0.506 \text{ mJy beam}^{-1}$ . Therefore, this result cannot be reported as a statistically significant detection.<sup>5</sup> At later times, during the post-flare phase, our VLBA observations reveal a compact core with a flux density at 5 GHz ( $\sim 0.57 \text{ mJy beam}^{-1}$ )  $\sim 3.2$  times brighter than the preceding 1.6-GHz component ( $\sim 0.17 \text{ mJy beam}^{-1}$ ). More details on the radio data are presented in Table 1.

We show the IR light curve in the upper panel of Fig. 3, which spans a baseline of 9 yr from December 2013 to March 2022. The IR flux was very stable from MJD 56700 to 58500, prior to the first optical flare in 2019; after that, the emission suddenly started to increase in both W1 and W2 bands. The increase in the IR luminosity by a factor  $\sim 2$  was coincident with the onset of the first optical flare. Around MJD 59100, the IR luminosity again increased by an additional factor  $\sim 2$ , this time coinciding with the second (X-ray) flare from AT 2019avd. We separate the IR steady component (MJD 56700 to 58500), probably associated with background emission or from the host galaxy from the flaring component (MJD 58500 to 59520). We quantify the unvarying component by fitting the IR flux before the first optical flare when the source was IR quiet (see the dash line in Fig. 3, top panel) for W1 and W2. The flaring component is measured by subtracting the constant IR flux to the total emission

<sup>5</sup>We performed a statistical analysis by repeating 10 times the measurement of the putative source and of the background level on different areas to conclude that we cannot make any claim of a robust detection. Therefore, any conclusion on the emission of AT 2019avd would be an overinterpretation of this data set.

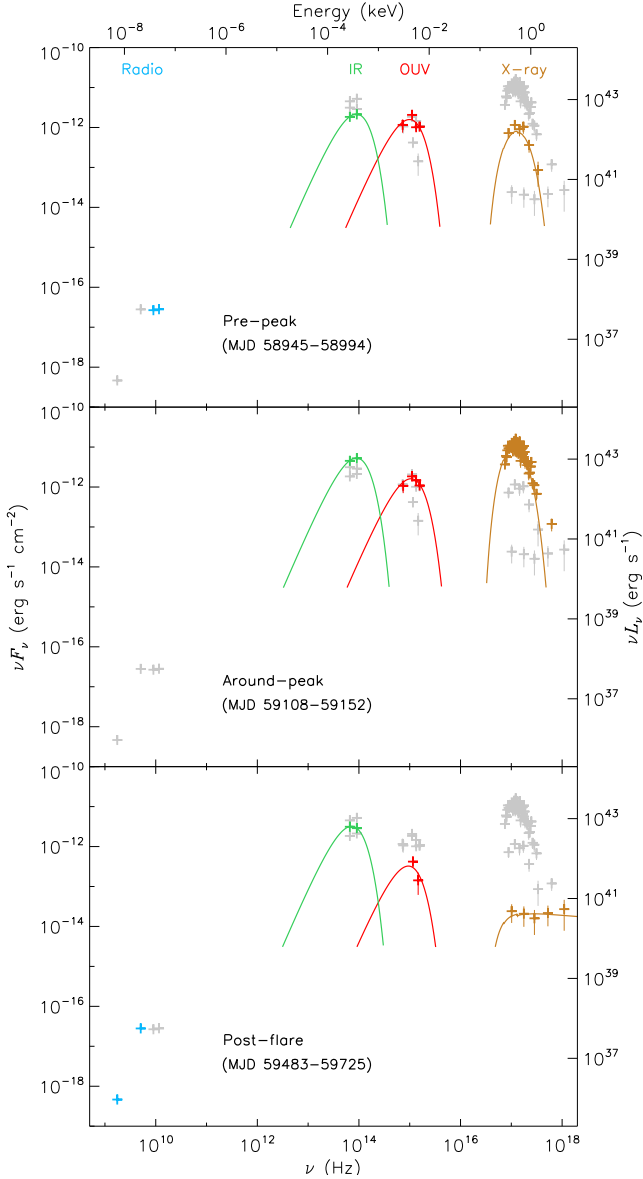


**Figure 3.** *Upper:* Temporal evolution of the IR luminosity of AT 2019avd. The light curve was separated into a steady component plus a flaring component, the latter most likely associated with AT 2019avd. The dashed line indicates the luminosity level of the steady component prior to the event. The inset shows the quasi-simultaneous evolution of the IR (flaring component) and optical/UV emission. *Lower:* The evolution of the spectral index  $\alpha_{\text{IR}}$  (defined as  $F_{\nu} \propto \nu^{\alpha}$ ) determined between W1 and W2 (see Section 3).

in the two *WISE* bands. We show the relative changes of the IR and the optical/UV luminosities in the inset of Fig. 3 in which we only include the flaring component of the IR and the quasi-simultaneous optical/UV observations.

#### 4 SPECTRAL ENERGY DISTRIBUTION

We generate the spectral energy distribution (SED) of AT 2019avd from radio to X-ray bands with the VLA/VLBA, *WISE*, UVOT, and *XRT* data. The optical-to-UV spectrum is converted from the host-subtracted and Galactic extinction-corrected photometry in each UVOT filter (see more details in Appendix A). As the optical emission in the *V* and *B* bands has approximately maintained at the host galaxy level, we exclude the *V* band data from the spectrum. To better define the optical-to-UV spectrum, we only selected the UVOT observations with detection in at least four filters. However, no observations from the late-time flare (after MJD 59368) meet this criterion. We thus jointly fitted the optical-to-UV SED extracted from the observations between MJD 59368 and 59376 with all the parameters linked to increase the signal-to-noise ratio. The same method was applied to the X-ray spectra obtained in this period. The



**Figure 4.** The radio to X-ray SEDs. The three SEDs are taken from the pre-peak, around-peak, and post-flare periods (the peak and flare here are referred to the second optical flare, see legends for the time). The optical and X-ray spectra have been rebinned. The light blue, green, red, and fawn crosses represent the radio, IR (flaring component), optical/UV, and X-ray data, respectively. Data from different epochs are shown in grey for comparison. The radio SED shown in the bottom panel is taken 34–95 d before the post-flare period.

other ten selected UVOT spectra were fitted independently while the simultaneous *XRT* spectra were jointly fitted with the column density linked across observations. Here we only include the UVOT data for the spectral analysis; the detection provided by ZTF is likely dominated by line emission, which we will discuss further in Section 5.1.3. We illustrate three radio to X-ray SEDs ( $\nu F_\nu$ ) in Fig. 4: from top to bottom, they are taken from the pre-peak (MJD 58945–58994), the around-peak (MJD 59108–59152), and the post-flare (MJD 59483–59725) phases. To increase the signal-to-noise ratio, we have also combined the *XRT* spectra taken between MJD 59483 and 59725.

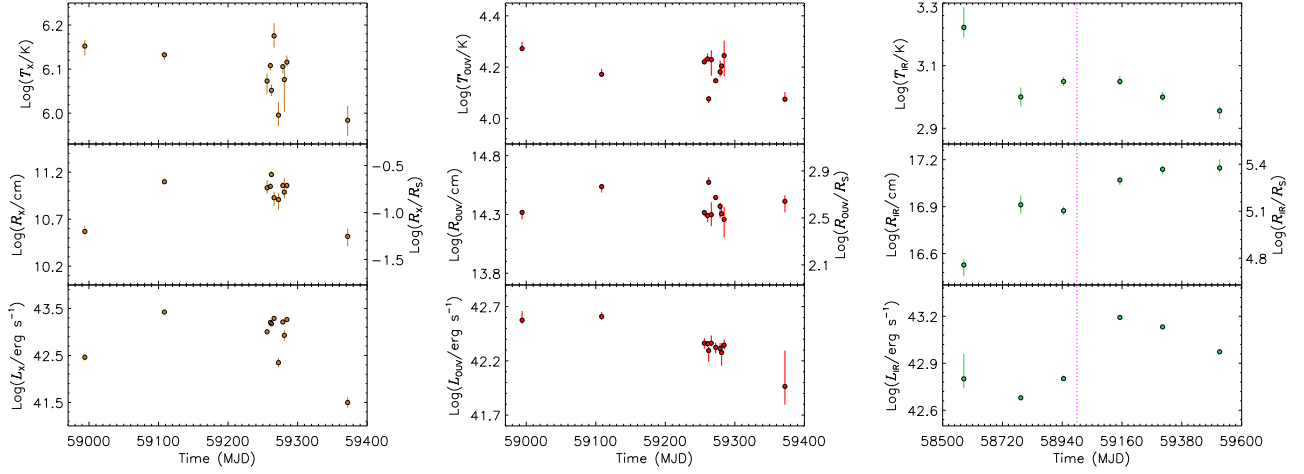
Both of the optical/UV and the X-ray spectra can be described reasonably well with (a/an absorbed) single-temperature blackbody component (bbodyrad in XSPEC, Arnaud 1996). The X-ray absorption (described by tbabs) is constrained to be larger than the Galactic value,  $2.4 \times 10^{20} \text{ cm}^{-2}$ , adopted from the HI4PI survey (HI4PI Collaboration et al. 2016). The blackbody radius,  $R$ , can be computed from the normalization of the bbodyrad component,  $K$ , as  $R = \sqrt{K} \times D_{10}$ , where  $D_{10} = 1.3 \times 10^4$  is the source distance in units of 10 kpc. Adopting a BH mass of  $10^{6.3} M_\odot$  from Malyali et al. (2021), we obtain the optical-UV and the X-ray photospheric radii  $R_{\text{OUV}} = 611\text{--}1267 R_S$  and  $R_X = 0.1\text{--}0.5 R_S$ , respectively, where  $R_S = 2GM_{\text{BH}}/c^2$ . The optical/UV and X-ray fluxes are calculated in the 0.001–0.2 and 0.3–10 keV, respectively. We illustrate the evolution of the blackbody temperature, radius, and luminosity in Fig. 5, and the best-fitting parameters inferred from the three SED from IR to soft X-ray in Table B1. Alternatively, we have also considered non-thermal origins for the optical-UV and X-ray emission. If we replaced the bbodyrad component with a powerlaw to fit the SED shown in the middle panel of Fig. 4, we obtained a photon index of  $\Gamma_{\text{OUV}} = 2.2 \pm 0.3$  and  $\Gamma_X = 6.5 \pm 0.3$ , respectively. For the optical-to-UV SED, it results in a worse fit with  $\chi^2$  increasing by  $\Delta\chi^2 = 4.03$  for the same degree of freedom ( $\nu = 4$ ), and the null hypothesis probability decreasing from 0.02 to 0.007. While for the case of the X-ray SED, we obtained a statistically good fit with an increase in the column density of nearly one order of magnitude. However, the photon index is too high to be non-thermal. Therefore, a thermal origin tends to be preferred by both the optical-UV and the X-ray SED. In fact, the measured temperature and radius are consistent with previous works in both optically and X-ray selected TDEs (Gezari 2021).

Although with some small wiggles, neither the optical/UV nor the X-ray blackbody temperature shows statistically significant evolution, except for the one derived from one (MJD 59368–59376) of the combined spectra. Especially for the X-ray data, both of its temperature and photospheric radius are smaller than the rest period (see the last data point in leftmost panel of Fig. 5). This is likely due to the application of an inappropriate model. However, if replacing the bbodyrad component with a powerlaw component (XSPEC based) in our model, the two fits are comparable and the obtained photon index is  $4.7 \pm 1.1$ , still supporting a thermal spectrum. While as shown in the bottom panel of Fig. 4, the late-time (MJD 59483–59725) X-ray spectrum flattened with a photon index of  $\Gamma = 2.08^{+1.53}_{-0.89}$ . Although the photon index can only be loosely constrained due to the low statistics, the spectrum at late times is apparently different from other periods. Hardening of the X-ray spectrum as the source evolved back to quiescence is also confirmed by the spectral analysis of *NICER* data in Wang et al. (in prep). After MJD 59335, the *NICER* spectrum only requires an absorbed powerlaw to account for the continuum, with the photon index decreasing from nearly 5 to  $\sim 2$  and the hardness ratio<sup>6</sup> increasing from 0.1 to 1.

We show the spectral index in the IR band,  $\alpha_{\text{IR}}$ , in the bottom panel of Fig. 3. For the steady component prior to the flare,  $\alpha_{\text{IR}} \approx 1.91 \pm 0.10$ , which is typical of optically thick thermal emission (i.e. a blackbody spectrum with a temperature  $> 3000$  K) during the first flare,  $\alpha_{\text{IR}}$  decreased from  $0.9 \pm 0.2$  to being consistent with 0; in the second flare,  $\alpha_{\text{IR}}$  evolved to be negative. By fitting the IR spectrum (only the flaring component) with a bbodyrad component, we

<sup>6</sup>The hardness ratio here is defined as the ratio between the count rates at 0.8–2.0 and 0.3–0.8 keV.





**Figure 5.** Blackbody temperature (top)/radius (middle)/luminosity (bottom) evolution of the X-ray (left), optical-UV (centre), and IR (right) emission. The magenta dashed line in the right-hand panels indicates the position of the first data point shown in the other panels.

obtain a temperature decreasing from  $1590 \pm 220$  to  $873 \pm 35$  K, and the corresponding photospheric radius increasing from  $3.4 \times 10^{16}$  to  $14.0 \times 10^{16}$  cm (see the right-hand panels of Fig. 5). In what follows, we only consider the flaring component in our analysis. We discuss why a non-thermal origin is not in favour in Section 5.1.2.

In Fig. 4, we also show radio data in the SED. These radio observations cover a long period of time ( $\sim 1.5$  yr), so it is more prudent to compare the ones that are closer in time. The in-band 10-GHz VLA observation reveals an optically-thin regime, described by a steep  $\alpha_{9-11.1\text{ GHz}} = -0.96 \pm 0.14$  ( $F_\nu \propto \nu^\alpha$ ), while the VLBA observations – which are 61 d apart – indicate that the source has an inverted spectrum in the 1.6–5 GHz band,  $\alpha_{1.6-5\text{ GHz}} = 1.02 \pm 0.20$ . In order to elucidate the nature of AT 2019avd, this novel information needs to be put in a temporal and multiband context.

## 5 DISCUSSION

AT 2019avd is a nuclear transient exhibiting two multiwavelength flaring episodes. Based on the observations from radio to X-rays with VLA/VLBA, *WISE*, ZTF, *Swift*/UVOT, *Swift*/XRT, and *NICER*, it has been noted: (i) two consecutive optical flares (spanning over 1000 d) showing different profiles – the first one presents a sharp peak and the second one presents two plateaus; (ii) a compact radio core in the second flare ( $L_{10\text{ GHz}} \sim 6 \times 10^{37}$  erg s $^{-1}$ ) together with  $L_{\text{bol}} > 6.5 \times 10^{43}$  erg s $^{-1}$  at the peak; (iii) a  $\sim 70$ -d delay between the optical and X-rays; (iv) two bright IR flares with luminosities up to  $1.5 \times 10^{43}$  erg s $^{-1}$ ; (v) different temporal evolution in radio, IR, optical, and X-ray bands from the second peak. In this section we discuss each of these features and try to unveil the nature of this nuclear transient.

### 5.1 The multiband properties and possible origins

#### 5.1.1 Radio

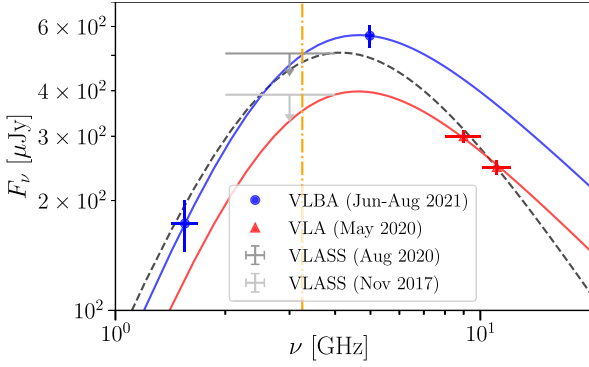
Despite the uncertainties introduced by the non-simultaneity of multifrequency radio observations and the lack of a high-cadence radio monitoring of the source, we can still derive insightful conclusions regarding the radio emission of AT 2019avd. First, we neglect any pre-existing radio activity of the galaxy prior to the detection of AT 2019avd, as previous observations in 2001 and 2017 did not

show significant radio emission (though with an upper limit of  $< 10^{38}$  erg s $^{-1}$ ).

We estimate the brightness temperature  $T_B$  from the flux density of the compact component in the VLBA maps. We obtain  $T_B \sim 4.8 \times 10^6$  K at 5 GHz and  $T_B \sim 1.7 \times 10^6$  K at 1.6 GHz, corrected for the redshift of the source. These values are higher than the typical limit value,  $10^5$  K, used for compact starburst (Condon et al. 1991). The high brightness temperature beyond this limit is generally interpreted as evidence of non-thermal synchrotron radiation from an accreting BH (e.g. Falcke et al. 2000).

Next, we examine the radio loudness,  $R = L_{\text{radio}}/L_{\text{disc}}$ , where  $L_{\text{radio}}$  is typically measured at 5 GHz and  $L_{\text{disc}}$  is measured as the B-band luminosity (4400 Å, Kellermann et al. 1989) or the 2–10 keV X-ray luminosity (Terashima & Wilson 2003). This parameter  $R$  is used to distinguish between radio-quiet non-jetted and radio-loud jetted AGN (Padovani 2017). Unfortunately, we cannot estimate a robust  $R$  at the VLA detection, because the X-ray spectrum is dominated by the background at energies above 2 keV and the B-band flux is basically at the host galaxy level. At the time of the 5 GHz VLBA detection ( $L_{\text{radio}} \sim 4.0 \times 10^{37}$  erg s $^{-1}$ ), we opt for the 2–10 keV X-ray luminosity to estimate  $L_{\text{disc}}$  since the X-ray spectrum hardens. In order to obtain a robust measurement, we jointly fitted the XRT spectra from MJD 59483 to 59725 (the X-ray flux remained constant in this period). The corresponding X-ray luminosity is  $L_X = (2.5\text{--}13.0) \times 10^{40}$  erg s $^{-1}$ , and hence the radio loudness is  $\log R_X = -(2.8\text{--}3.5)$ , which is higher than the value of  $-4.5$  used to distinguish between the radio-quiet and radio-loud regimes (Terashima & Wilson 2003). This indicates that the source was in a radio-loud state at the VLBA epoch with a radio power similar to those of nearby low-luminosity AGN (e.g. Nagar, Falcke & Wilson 2005; Baldi et al. 2021).

The flux densities derived from the 10-GHz VLA and 5-GHz VLBA observations differ by a factor  $\sim 2$ , which could reconcile with an intrinsic radio variability of the source, assuming related to BH accretion (for typical radio-quiet AGN, Panessa et al. 2019). The VLA spectral index measured at the second optical flare,  $\alpha_{9-11.1\text{ GHz}} \sim -1$ , significantly differs from the VLBA spectral index measured during the optical/X-ray luminosity drop (more than a year later),  $\alpha_{1.6-5\text{ GHz}} \sim 1$ . As our observations probed different frequency ranges at different times and physical scales, the possible interpretations on the steep-spectrum emission at higher frequencies,



**Figure 6.** Multi-epoch radio SED of AT 2019avd. The dashed black line is a fit to all the data using the blob model given by equation (2), while the solid red and blue lines are fits to only data taken with similar epochs and angular resolution (see text in Section 5.1.1). This shows that the whole radio emission could be reconciled with a non-stationary synchrotron-emitting compact source with a flux increasing by 50 per cent from 2020 to 2021. The vertical dash-dotted line is the value  $\nu_a \approx 3.2$  GHz at which synchrotron self-absorption starts to dominate the SED.

and the inverted-spectrum emission at lower frequencies are not univocal and are discussed below:

(i) **Stationary blob.** In a first-order approximation, we can test the possibility that the whole radio emission of AT 2019avd is related to a single stationary synchrotron-emitting compact blob emitted by the accreting BH. The large caveat of this assumption is the omission of the effect of the different physical scales probed by the VLA and VLBA observations. The synchrotron self-absorption frequency of the source,  $\nu_a$ , marks the transition from an optically-thin synchrotron spectrum at high frequencies ( $\alpha < 0$  at  $\nu \gg \nu_a$ ) to a self-absorbed spectrum at low frequencies ( $\alpha = 2.5$  at  $\nu \ll \nu_a$ ). This behaviour is captured in the model developed by Granot & Sari (2002) for synchrotron emission from gamma-ray burst afterglows. We use this model to fit the radio flux densities of AT 2019avd, similarly as done by Cendes et al. (2021) for the radio-TDE AT2019dsg. Explicitly, this model parametrized the radio SED as:<sup>7</sup>

$$F_\nu = F_0 \left( \frac{\nu}{\nu_0} \right)^{5/2} \left[ 1 + \left( \frac{\nu}{\nu_a} \right)^{s_2(b_2-b_3)} \right]^{-1/s_2}, \quad (2)$$

where  $F_0$  is the flux density at a reference frequency  $\nu_0$ ,  $b_2 = 5/2$ ,  $b_3 = (1 - p)/2$ , with  $p$  the spectral index of the relativistic electron population ( $N(\gamma_e) \propto \gamma_e^{-p}$ ), and  $s_2 = 1.25 - 0.18p$ . Fig. 6 (dashed line) shows an exploratory fit to the whole data set. This fit yields a very steep electron energy distribution with  $p = 3.8 \pm 0.7$  ( $N(\gamma_e) \sim \gamma_e^{-p}$ ), which is steeper than typically found in TDEs (though still physically possible under specific conditions; e.g. quasi-perpendicular shocks with velocities  $> 10^4$  km s<sup>-1</sup>, Xu 2022). Moreover, this fit cannot satisfactorily reproduce the radio data as it significantly underpredicts the flux density at 5 GHz, and it is also in tension with the VLASS 2017 upper limit at 3 GHz. This test demonstrates that a single stationary blob is much unlikely a plausible scenario for AT 2019avd, because of its inconsistency with the observations.

<sup>7</sup>We consider that the lowest energy electrons emit at a characteristic frequency  $\nu_m$  that is much lower than the frequencies of interest in our observations. Thus, equation (1) from Cendes et al. (2021) converts to equation (2) for  $\nu \ll \nu_m$ .

(ii) **Temporal evolution.** We have also considered a more plausible physical picture in which the observed radio flux is produced by an evolving source. Based on the radio-AGN phenomenology (Panessa et al. 2019), two possible interpretations on the origin of the radio emission are considered:

(i) **Evolving blob.** In this scenario, both the peak brightness of the blob and  $\nu_a$  change with time, with  $\nu_a$  shifting to lower frequencies (e.g. for blob expansion, Eftekhari et al. 2018; Cendes et al. 2021). The problem we face is that we only have two quasi-simultaneous data points at each epoch (2020 and 2021), and thus it is not possible to fit simultaneously all the parameters that describe the spectrum in equation (2). Thus, we assumed that the values of  $p$  and  $\nu_a$  did not change significantly between the two observing epochs, and allowed only for the peak flux to vary. Fitting the high-frequency VLA observations, we obtained  $p \approx 2.9 \pm 0.4$ , while the value of  $\nu_a$  is given by the low-frequency VLBA observations and the fitting yields  $\nu_a = 3.2 \pm 0.3$  GHz. The high- and low-frequency fits (blue and red lines in Fig. 6) are consistent with a flux increasing by 50 per cent from 2020 to 2021. The results are shown in Fig. 6 and indicate that, in principle, an evolving single emitting blob can account for the behaviour seen in the different radio bands at different epochs. However, this requires that the value of  $\nu_a$  did not change significantly between 2020 and 2021, as a value of  $\nu_a > 4$  GHz in 2020 (as could be expected if it decreases in time-scales of hundreds of days, e.g. Cendes et al. 2021) would compromise the fitting of the VLA spectra. A rather steady value of  $\nu_a$  has been observed in other radio TDEs (Cendes et al. 2022; Goodwin et al. 2022) and stands opposite to the expectations for a cooling/expanding single blob. A possible explanation is the ejection of consecutive radio-emitting blobs that prevent  $\nu_a$  from shifting to lower values. To test this scenario more convincingly, a multifrequency radio monitoring at high angular resolution is needed.

(ii) **Wind-jet scenario.** Alternatively, the radio spectrum of AT 2019avd can also be phenomenologically interpreted with two different physical processes operating in two separate epochs. First, during the VLA detection (coincident with the optical/X-ray flare) when the accretion disc is formed, the radio properties are consistent with an optically thin large-scale outflow (with a speed a few thousands of km s<sup>-1</sup>, Zakamska & Greene 2014), driven by the radiation pressure of the accretion disc. This disc wind shocks the surrounding gas and accelerates relativistic electrons that produce synchrotron radio emission on scales  $> 100$  pc (Zakamska & Greene 2014; Nims, Quataert & Faucher-Giguère 2015; Karouzos, Woo & Bae 2016). According to the wind model from Nims et al. (2015), the synchrotron emission from AGN-driven winds has  $\alpha = -1$  and a luminosity  $L_{\text{radio}} \sim (0.01-1) \times 10^{-5} L_{\text{bol}}$ ,<sup>8</sup> where in our case  $L_{\text{bol}} \sim L_{\text{Edd}} \approx 3 \times 10^{44}$  erg s<sup>-1</sup> (although model-dependent, see Section 5.1.4), yielding  $L_{\text{radio}} \sim (0.01-1) \times 10^{39}$  erg s<sup>-1</sup>. Such a range of values include the radio luminosity measured at 10 GHz ( $\sim 6 \times 10^{37}$  erg s<sup>-1</sup>) if the source is accreting at  $\dot{M} \gtrsim 0.1 M_{\text{Edd}}$ . Furthermore, the high Eddington ratio (greater than unity, see Section 5.1.4) and the VLA spectral index of AT 2019avd lie on the empirical relation found for AGN-driven outflows (Laor, Baldi & Behar 2019; Yang et al. 2020). At later epochs, a jet would be responsible of the emission detected during the VLBA observations. In fact, the evidence – i.e. the inverted radio SED, the moderately high  $T_B$ , the pc-scale compactness, and the radio-loud classification – indicates that the radio emission is not due to star formation, but rather to a newly

<sup>8</sup>The range depends on the fraction of the shock energy which goes into relativistic electrons.

formed compact radio jet ( $<10$  pc, based on the VLBA map), in analogy with young radio sources (e.g. O’Dea & Saikia 2021). A mildly-to-low relativistic jet (probably with a jet bulk Lorentz factor  $< 2$ ) is favoured over i) a slow outflow, since the latter is expected to have a diffuse morphology (rather than compact on pc-scales) and an optically-thin spectrum (Falcke & Biermann 1995; Panessa et al. 2019), and ii) a highly-relativistic jet because  $T_B$  of AT 2019avd is lower than typical values measured from radio-loud AGN,  $T_B \sim 10^8\text{--}10^{13}$  K (e.g. Ghisellini et al. 1993; Nagar et al. 2005), with a typical jet bulk Lorentz factor  $\gtrsim 2\text{--}3$  (Urry, Padovani & Stickel 1991; Urry & Padovani 1995; Mullin & Hardcastle 2009; Hogan et al. 2011). The contribution to the radio emission from the disc wind at the VLBA epoch is not expected to be important as the mass accretion rate has decreased to the sub-Eddington regime, resulting in a strong decline of the outflow, although the unknown physical conditions of the disc and surrounding gas (e.g. magnetic field, density and temperature) prevent from deriving a more conclusive interpretation.

### 5.1.2 Infrared

IR emission can, in principle, originate from either non-thermal or thermal processes. In the former case, if we associate the IR emission to optically-thin synchrotron radiation, the radio emission from this component would be much brighter than the observed one. Namely, the radio emission at 10 GHz would need to be  $\sim 10$  mJy, which is roughly 33 times higher than our 10-GHz VLA detection. This discrepancy rules out a non-thermal origin for the IR activity of AT 2019avd. We refer the reader to Appendix C for further details of this calculation.

Alternatively, IR emission has been commonly taken as the evidence of dust echos in both AGNs (Netzer 2015) and TDEs (Lu, Kumar & Evans 2016; Jiang et al. 2021; van Velzen et al. 2021), i.e. optical, UV and X-ray photons are absorbed by dust grains and re-radiated in the IR. In the case of AT 2019avd, the IR emission is very bright, reaching up to  $1.5 \times 10^{43}$  erg s $^{-1}$ , and is also significantly variable, having increased twice during the two flares (by an additional factor 2–3 during the second one with respect to the first one). The slight increase in the IR temperature by  $\Delta T_{\text{IR}} \sim 120$  K (with a confidence of  $12\sigma$ ) from the first to the second flare also supports the presence of the second IR flare (see Fig. 5). The first flare can be explained by the dust reprocessing the optical/UV light, while the second one could be associated with the soft X-rays (and/or EUV). Since the optical/UV fluxes in the two flares are comparable and the X-ray is much brighter than the optical/UV in the second flare, the further increase in the IR is very likely due to the additional contribution from the X-rays. This hints that there might be no strong X-ray/EUV emission in the first flare. The lack of Bowen features in the first flare (Malyali et al. 2021) could be indicative of the absence of X-ray/EUV emission (Leloudas et al. 2019).

One important application of dust echos is to calculate the bolometric luminosity.<sup>9</sup> In the context of TDEs, van Velzen et al. (2016) assumes that the reprocessing shell of dust is located at the dust sublimation radius given by

$$R_{\text{dust}} \approx 0.15 \left( \frac{L_{45}}{a_{0.1}^2 T_{1850}^{5.8}} \right)^{1/2} \text{ pc}, \quad (3)$$

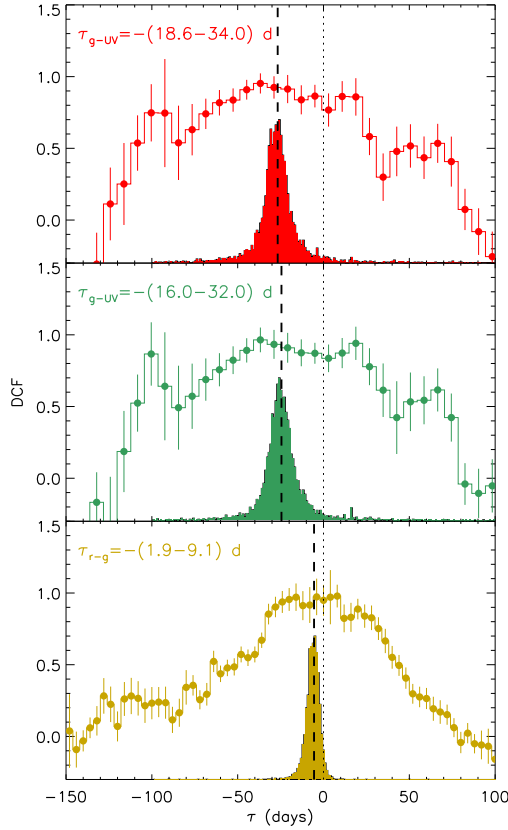
<sup>9</sup>Since several bands are unobserved (e.g. EUV) and the dust would obscure the optical/UV/X-ray emission, the actual bolometric luminosity should be higher than the one we estimate.

where  $L_{45}$  is the absorbed luminosity in units of  $10^{45}$  erg s $^{-1}$ ,  $a_{0.1}$  is the size of the dust grains in units of  $0.1 \mu\text{m}$ , and  $T_{1850}$  is the dust temperature in units of 1850 K. Another parameter required to measure  $L_{\text{bol}}$  is the time delay of the dust echo with respect to the TDE flare,  $\tau \sim R_{\text{dust}}/c$  (Jiang et al. 2016). If we assume that the first IR data point (MJD 58578) of the flaring component is the peak of the first IR flare, we can get a time delay of  $\tau \sim 40$  d with respect to the first optical flare. This leads to  $R_{\text{dust}} \sim 0.03$  pc, which is comparable to the photospheric disc radius of  $0.01$  pc (considering that the latter is likely underestimated). Adopting a single dust radius of  $a = 0.1 \mu\text{m}$ , we obtain an absorbed bolometric luminosity of the dust of  $\sim 0.24 L_{45}$  (or  $\sim 0.94 L_{\text{Edd}}$ ). This implies a covering factor of the dust in the nuclear region of AT 2019avd,  $f_{\text{dust}} \sim L_{\text{IR}}/L_{\text{abs}} \sim 0.1$ . Considering the uncertainties in both the time lag and the size of the dust grains, these values, i.e.  $L_{\text{abs}}$  or  $L_{\text{bol}}$  and  $f_{\text{dust}}$ , should be taken with caution. While in terms of the second flare, the case is more complicated because of the overlap of the dust cooling process (due to the first flare) and the extra heating from the second flare, as well as the involvement of the soft X-rays (which are highly variable and peaked at least twice) and/or the unobserved EUV. At the time of writing, the dust emission is still in the cooling phase, so a further, comprehensive investigation of the IR activity in AT 2019avd will be conducted in a separate paper.

### 5.1.3 Optical/UV

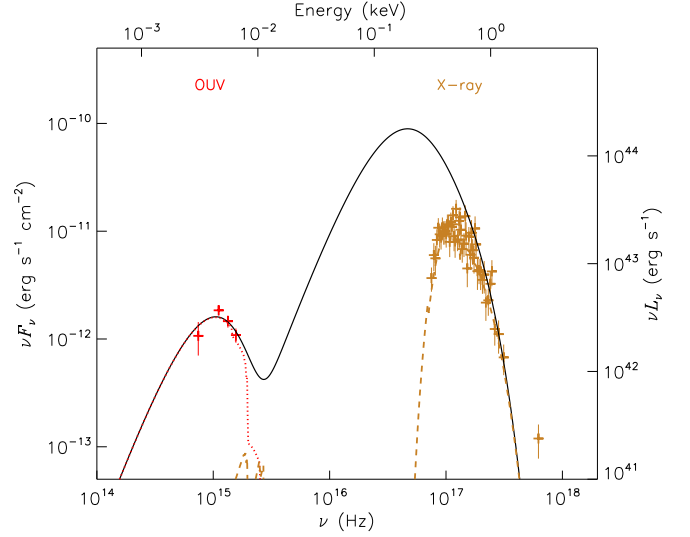
The optical/UV light curve in AT 2019avd has shown a peculiar pattern. The total optical emission lasts for over 1000 d and shows two distinguished flares: the first one displayed a sharp peak around MJD 58534.3; the second one lasted roughly twice as long as the first one with a plateau phase present from MJD 59110 to 59220. Moreover, the first flare declined much faster than the second one, e.g. 74 d after the first peak, the luminosity dropped by over a factor of 4, while the second flare only dropped by a factor of 2 in the same time. We lack UV observations during the first flare and therefore cannot assess its behaviour during that time, but at least during the second flare the UV behaviour is comparable to the optical one. The following late-time (after the ZTF monitor) UV emission shows there was a second plateau present at least from MJD 59473 to 59580.

For the optical emission, we notice that the second flare has only been significantly detected by ZTF, but not by UVOT with its *V* and *B* bands. The lower panel of Fig. A1 illustrates that the variability of the flare increase as the wavelength decreases. The magnitudes of the UVOT-*V* and -*B* bands remain nearly constant, and are consistent with the host galaxy emission, indicating that the optical emission of AT 2019avd in these two bands is comparable to or lower than the emission from the host galaxy. As the maximum effective temperature of the accreting material is proportional to the mass accretion rate and inversely proportional to the central BH mass (Shakura & Sunyaev 1973), the fact of the optical-UV SED of AT 2019avd dominated by the UV band suggests that its central SMBH has a small mass. A similar UV dominated SED (Leighly & Moore 2004) has been observed in the narrow-line Seyfert 1 Galaxy 1H 0707–495 which has a BH mass of  $5 \times 10^6 M_{\odot}$  (Zoghbi et al. 2010). The main difference between the ZTF-*g* and -*r* bands and the UVOT-*V* and -*B* bands is that the former are more sensitive to the  $H\alpha$  and  $H\beta$  line emission. Moreover, Malyali et al. (2021) observed significant, broad  $H\alpha$  and  $H\beta$  emission lines with a single-peaked profile in the optical spectra of AT 2019avd. Therefore, the optical flares observed by ZTF could be possibly contributed by the Balmer lines.



**Figure 7.** Interband lag measurements. The contours represent the bootstrap distribution, which has been re-scaled for plotting purpose. The dashed lines indicate the median of each distribution.

As the UV emission shows a comparable evolution to the optical line emission and the former shows higher variations than the latter, the second optical flare observed by ZTF is likely produced by UV reprocessing. To verify this conjecture, we applied the same method described in Section 3 (DCF plus bootstrapping technique) to estimate the lag between the optical and the UV. We obtained values of  $\tau_{r-UV} = -26.7^{+8.1}_{-7.3}$  d between ZTF-*r* and UVOT-UVW1, and  $\tau_{g-UV} = -24.5^{+8.5}_{-7.5}$  d between ZTF-*g* and UVOT-UVW1. We plot the DCF against lag in Fig. 7, accompanied with the bootstrap distribution. Such a negative lag between the emission at long and short wavelength, accompanied by the comparable behaviours, has been commonly taken as evidence of a reprocessing effect (e.g. reverberation mapping in AGN and XRBs; Blandford & McKee 1982; Peterson et al. 2004; Uttley et al. 2014). The measured lags between the optical and the UV support the above conjecture. Additionally, if applying the same technique to the ZTF-*r* and -*g* bands, we obtained a marginally soft lag of  $\tau_{r-g} = -5.5 \pm 3.6$  d. Considering only the light-travel time, the time-scale of the lags between the optical and UV corresponds to a distance of  $4.1\text{--}8.6 \times 10^{16}$  cm. This implies that the distance between the optical emitting region and the central SMBH is more than three orders of magnitude larger than the circularized debris disc ( $R_{\text{circ}} = 2R_T$ , where  $R_T = 1.8 \times 10^{13}$  cm is the tidal radius, Hills 1975; MacLeod, Guillochon & Ramirez-Ruiz 2012) if assuming a SMBH with a mass of  $10^{6.3} M_{\odot}$  disrupts a sun-like star. Therefore, the reflecting surface cannot be the disc itself, but some distant gas instead. Furthermore, these soft lags are roughly a factor of 2 smaller than the dust-echo time-scale (see Section 5.1.2), suggesting that the gas reprocessing region locates closer to the centre than the dust reprocessing region, but they are adjacent to



**Figure 8.** Optical to X-ray SED fitted with a *bbodyrad* (red dotted line) plus an absorbed *agnsed* component (brown dashed line). The red and brown crosses and lines represent the optical-UV and X-ray data. The black solid line represents the unabsorbed model. This SED is the same as the one shown in the middle panel of Fig. 4.

each other. Overall, we conclude that the sub-pc scale environment of the circumgalactic medium of AT 2019avd is gaseous and dusty.

Additionally, by fitting the SED from the second flare with a single-colour blackbody, we obtained the photospheric radius of the UV/optical region of  $R_{\text{OUV}} \sim 1.8\text{--}3.7 \times 10^{14}$  cm, which is about three orders of magnitude larger than the X-ray region,  $R_X \sim 0.3\text{--}1.5 \times 10^{11}$  cm (see Fig. 5). This suggests the two emission regions are separated. Although the origin is still controversial, this phenomenon has been commonly observed in TDEs (see Fig. 8 in Gezari 2021).

#### 5.1.4 X-ray

The further increase in the IR luminosity and the emergence of the Bowen line (Malyali et al. 2021) associated with the second flare suggest that the soft X-ray emitter might not have been formed until the second flare. Hence, a high accretion rate is required to efficiently form an accretion disc in roughly 100 d. If simply adopting  $\dot{m} = \dot{M}/\dot{M}_{\text{Edd}} = L/L_{\text{Edd}}$ , the accretion rate will be underestimated (see the previous footnote 9). To obtain a reliable accretion rate, we employ an absorbed AGN SED model *agnsed*<sup>10</sup> (Kubota & Done 2018) to describe our SEDs. However, the UV part of the SED cannot be described well with one *agnsed* component, for which an additional component is required. After adding a *bbodyrad* component to the model, the fit significantly improved. For instance, the reduced  $\chi^2$  of the fit<sup>11</sup> to the SED (see the middle panel of Fig. 4) around the X-ray peak decreased from 136.60/80 to 81.99/78. Fig. 8

<sup>10</sup><https://heasarc.gsfc.nasa.gov/xanadu/xspec/manual/node132.html>

<sup>11</sup>For the set-up of the *agnsed* component, we assume a non-spin SMBH, a relatively low disc inclination of  $35^\circ$ , and adopt a mass of  $10^{6.3} M_{\odot}$  (Malyali et al. 2021), a redshift of 0.028 and a distance of 130 Mpc. As there is no hard X-ray emission, we assume that the radius, electron temperature and photon index of the hot Comptonization region are  $6 R_g$ , 100 keV, and 2, respectively. The radius of the warm Comptonization region is  $500 R_g$ , the scale height of the radius is  $10 R_g$ , and no reprocessing is considered. Overall, besides the accretion rate and the outer radius, we also obtain a steep photon index and



shows the unfolded spectra with the two components. The best-fitting parameters of the `bbbodyrad` component are comparable to the second data points in the left-hand panels of Fig. 5. The inferred accretion rate is  $6.7^{+2.7}_{-2.2} \dot{M}_{\text{Edd}}$  and the outer region of the disc locates at  $5.3^{+0.9}_{-0.6} R_{\text{S}}$ . Such a compact and soft X-rays dominated disc is very different from AGN's but is consistent with TDEs' (Rees 1988). This result yields that the disc was in a super-Eddington regime,  $\sim 6.7 L_{\text{Edd}}$ , around the peak of the second flare.

In addition, the luminosity/accretion rate of AT 2019avd may be (further) underestimated if outflows are present. The soft X-rays in AT 2019avd show the highest variability across all the electromagnetic waves, e.g.  $L_X$  varying a factor of 4 in 10 d. Such a variability seems to be correlated with the luminosity: the variability was relatively low prior to the X-ray peak (at around MJD 59000), and it reduced significantly after the X-ray luminosity dropped below  $5 \times 10^{42} \text{ erg s}^{-1} \sim 0.02 L_{\text{Edd}}$  (Fig. 2). This implies a state transition occurring around this X-ray luminosity. Although without direct evidence, outflows have been commonly observed in accreting systems (Díaz Trigo & Boirin 2016; Tetarenko et al. 2018) in TDEs (Dai et al. 2018; Hung et al. 2019, 2021) and in AGN (King & Pounds 2015; Fiore et al. 2017). The X-ray variability of AT 2019avd could be connected with the obscuration of clumpy outflows, suppressed after a decrease of the luminosity/accretion rate (meanwhile the variability decreased too). This also means that the variation in the X-ray radius shown in Fig. 5 could be unphysical as the changes in the X-ray luminosity are not purely linked to the motion of the inner region of the accretion disc. Further analyses of the X-ray variability in AT 2019avd will be presented in Wang et al. (in prep.). Additionally, Chen et al. (2022) interpreted the large-amplitude X-ray variability as the rigid-body precession of the misaligned accretion disc caused by the Lense–Thirring effect of a spinning SMBH.

Additionally, in the late-time of the second flare, when the optical and X-ray luminosities decrease, the X-ray spectrum hardens with emission above 2 keV (although very faint, see Fig. 4). This probably suggests the formation of a corona, which could lead to the formation/ejection of a compact jet. In fact, the corona has been interpreted as the base of a jet in AGN (e.g. Markoff, Nowak & Wilms 2005; King, Lohfink & Kara 2017). The formation of an X-ray emitting corona is also temporally associated with the evolution into an accretion disc with a very low Eddington ratio ( $\sim 10^{-3}$ ), consistent with radiatively-inefficient accretion disc (e.g. Yuan & Narayan 2014). The sub-Eddington disc, the X-ray corona, and the launch of a jet all reconcile with the typical picture of radio-loud jet-mode AGN (e.g. Falcke, Kording & Markoff 2004; Hardcastle, Evans & Croston 2007; Heckman & Best 2014) and TDEs (e.g. van Velzen, Kording & Falcke 2011; Tchekhovskoy et al. 2014). Recently, Sfaradi et al. (2022) interpreted the late-time radio emission of the TDE AT 2019azh as result of accretion transition to a low hard state similar to the observed behaviour in BH X-ray binaries (Fender, Belloni & Gallo 2004).

As mentioned in Section 4, the disc radius inferred from a single blackbody model is about  $0.1\text{--}0.5 R_{\text{S}}$ , smaller than the plausible event horizon of the central BH. A similar issue has been reported in previous works in the TDE literature, e.g. Wevers et al. (2019), Hinkle et al. (2021), Cannizzaro et al. (2021), and has been related to the underestimation of the X-ray luminosity. Several explanations have been proposed, such as disc inclination angle effects (Stein et al. 2021), obscuration (Mummery 2021), and/or Comptonization

(Saxton et al. 2020) of disc photons. Given the limited evidence available to us, we cannot draw further conclusions on this.

We show two schematics of the overall multiwavelength emission in super- and sub-Eddington regimes in Fig. 9 and discuss the possible nature of AT 2019avd based on the proposed geometry in the next section.

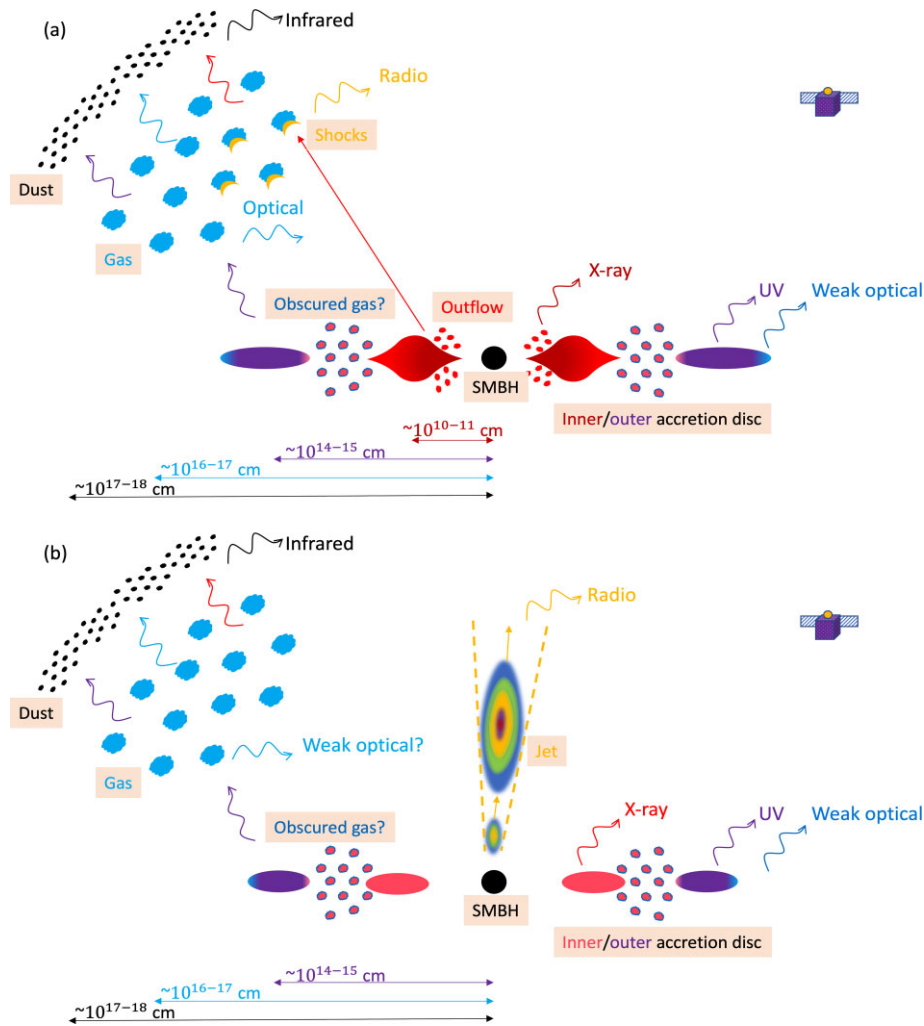
## 5.2 Scenarios of the delay between optical/UV and X-rays

Thanks to the high cadence of ZTF and *NICER*, we are able to closely monitor the second flare of AT 2019avd in the optical and X-ray bands. As shown in the long-term light curves (see the upper panel of Fig. 2) after an (at least) 106-d plateau phase, the optical flare started to decline  $\sim 70$  d earlier than the X-ray. This time delay has also been measured from the DCF between the optical (ZTF-*g* and *r* band) and the X-ray (*NICER*) data, indicating that the optical decay leads the X-ray component in AT 2019avd. Due to the limited cadence of *Swift*, we cannot directly measure the delay between the UV and the X-rays. However, as reported in Section 5.1.3, the UV arrived the observer 16–34 d earlier than the optical, which means that the delay between the UV and the X-ray decay should be larger, roughly 90–130 d.

A long hard lag can be interpreted in the framework of viscous propagation of the optical/UV fluctuations across the disc (Lyubarskii 1997; Marshall, Ryle & Miller 2008). The viscous time-scale significantly depends on the height-to-radius ratio,  $t_{\text{visc}} \propto (H/R)^{-2}$ , where  $H$  and  $R$  are the vertical scale height and the radius of the disc, respectively. Assuming the X-ray and the optical-UV photospheric radii (see Fig. 5) as the radius of the inner and the outer part of a Shakura–Sunyaev disc (Shakura & Sunyaev 1973) surrounding a SMBH with a mass of  $10^{6.3} M_{\odot}$ , the viscous time-scale would be of several thousand of years, which is much larger than the observed lag. However, when the accretion rate is super-Eddington, the disc would be with a geometrically thick structure, similar to a slim disc (Abramowicz et al. 1988), and thus the height-to-radius ratio  $H/R$  would tend to unity. Consequently, the viscous time-scale would be significantly reduced, which in turn could be consistent with the observed delay.

An alternative scenario to explain a delay between optical and X-rays has been proposed by Gezari et al. (2017) in the context of TDEs. They observed that in the TDE ASASSN-15oi, the X-ray emission increased while the optical/UV flare declined. They thus proposed that the optical/UV originated from the self-interaction of the debris stream, and the X-ray could be coming from delayed accretion through a newly formed debris disc. To discuss our result in this scenario, we need to consider whether the second flare in AT 2019avd could be due to stream–stream shocks. As seen from Fig. 2, the second flare started after the first flare nearly quenched. Therefore, even if the first flare is caused by stream–stream shocks, the rising of the second flare must be due to another process. This flare is unlikely triggered by another TDE given that its profile is inconsistent with a typical tidal disruption flare. Even though a plateau has been observed in the optical/UV photometry of some TDEs (e.g. Gezari et al. 2017; Wevers et al. 2019), they are usually interpreted as an additional contribution due to X-ray reprocessing. After the optical/UV emissions start to decline, a plateau can only be formed if at the same time the X-ray emission increases (as the obscuring/reprocessing materials can only reduce). However, in the case of AT 2019avd, while a plateau appeared in the optical/UV photometries, the X-ray radiation reduced by nearly an order of magnitude (MJD 59110–59220). Therefore, the behaviour of the optical/UV emission in the second flare cannot be simply explained

a low electron temperature for the warm Comptonization region, which are  $\sim 3.31$  and  $\sim 0.15$  keV.



**Figure 9.** Schematics of the multiwavelength emission evolving from the super-Eddington (a) to the sub-Eddington (b) regimes. The main changes between the two regimes are i) the inner accretion disc evolves from a puffy to a thin disc geometry; ii) the radio emission was first from the shocks between the outflows and distant gas, and then from the late-time launched jets (an alternative scenario for the radio emission is discussed in 5.1.1). To simplify the schematics, the gases which are shocking with the outflows and are reprocessing the UV emission are not separated. The scales of each emitting region are not directly observed but rather inferred either from their luminosity or from the time lag.

by circularization shocks plus an X-ray reprocessing process. We thus exclude this scenario as an explanation for the delay.

### 5.3 Nature of the nuclear transient

Here we discuss the nature of the transient AT 2019avd based on the origin of its multiband emission.

Although rarely observed, a SN can occur in the nuclear region of a galaxy (e.g. Ulvestad & Antonucci 1997; Mattila & Meikle 2001; Villarroel et al. 2017). If only considering the post-peak period of the second optical flare of AT 2019avd, the light curve with a plateau lasting for over 106 d is alike to that of a type II-P supernova (e.g. Filippenko 1997; Pastorello et al. 2004). In such a system, the plateau phase has been suggested to be mainly powered by hydrogen recombination and radioactive decay (Woosley et al. 1987). However, the X-ray spectrum of SNe is usually hard, which can extend up to 100 keV (Ofek et al. 2013). Furthermore, the emission in the optical is thermal, and the temperature of the ejecta is expected to increase more significantly along with the drop in luminosity.

These properties of SNe are incompatible with the ultrasoft X-ray emission, the nearly constant optical-to-UV temperature and the high brightness temperature of the detected compact radio source of AT 2019avd.

Although the radio properties cannot be unambiguously interpreted, the most realistic scenario to account simultaneously for the radio and multiband properties of AT 2019avd is a temporal evolution of an accreting BH, whose outflows produce non-thermal emission. This can be in line with two plausible natures of the nuclear transient: an AGN-like phenomenon or a TDE.

In the former case, the non-detection of the active BH prior to its outburst in 2020 does not preclude the activity of central object, but sets an upper limit on its luminosity of  $<10^{41}$  erg s $^{-1}$  in X-rays and  $<10^{38}$  erg s $^{-1}$  in radio. These values are within the typical range of luminosities of nearby low-power AGN (e.g. Nagar et al. 2005; Balmaverde & Capetti 2006; Ho 2008). The outburst could be then interpreted as due to an increase of BH accretion. The peculiar spectroscopic properties of the transient identify two possible AGN classes which may be associated with outflows (wind or jet): NLSy1 and CLAGN.

NLSy1 galaxies constitute a class of AGN characterized by the FWHM of the  $H\beta$  broad emission line  $< 2000 \text{ km s}^{-1}$  and the flux ratio  $[O III]/H\beta < 3$  (Osterbrock & Pogge 1985). NLSy1 are generally believed to have lower BH masses ( $10^6$ – $10^8 M_\odot$ ) and higher Eddington ratios (e.g. Mathur 2000; Komossa & Rakshit et al. 2017). The optical lines, the soft and steep X-ray spectrum ( $\Gamma_X > 2$ ), the strong Fe II emission lines, and the high amplitude, rapid X-ray variability of NLSy1 reconcile with the observed properties of AT 2019avd. However, the evolution of this transient is much more complex, such as the disappearance of Fe II lines and the presence of the Bowen lines (Malyali et al. 2021), as well as the two optical flares. These properties do not strictly conform to the definition of the NLSy1 class.

CLAGN are another type of transients that occur at the centre of active galaxies (typically from a type-1 to type-2 or vice versa), where an evolution of emission line intensity and broadening as well as high-energy luminosity are interpreted as caused by a change of the accretion state or Compton-thickness of the AGN (e.g. Goodrich 1995; Guainazzi et al. 2002; LaMassa et al. 2015; Ricci et al. 2020). Broad Balmer emission lines have been observed by Malyali et al. (2021) in both of the optical flares of AT 2019avd, which show no significant evolution in the line profiles. The bolometric luminosity and the shape of the X-ray spectrum, however, show significant changes during the second flare (see Fig. 4). The luminosity decreases for nearly two orders of magnitude in 264 d as the flare evolves from the peak to the late time and the X-ray spectrum hardens. Although a typical AGN spectrum is usually hard with emission up to tens of keV, there are exceptional transient AGN that emit only soft X-rays, e.g. ZTF18aajupnt/ AT2018dyk (Frederick et al. 2019) and ASASSN-18el/AT2018zf/1ES 1927+654 for a certain period when the corona is argued to be disrupted (Ricci et al. 2020). A potential model to explain the absence of hard X-rays in AGN is that when the gas density is high,  $> 10^{-14} \text{ g cm}^{-3}$ , the bremsstrahlung losses exceed the Compton losses for the hot electrons and so they cool very efficiently, suppressing the emission of hard coronal X-rays (Proga 2005).

However, the evidence, such as the steady IR emission and the quenching of the flaring activity after hundred of days, argue against the existence of a luminous AGN at the location of AT 2019avd, at least for the period when AT 2019avd appeared. Although follow-up monitoring of this source would help to further test this scenario.

A TDE scenario is another possible identification of AT 2019avd with typical soft X-ray spectra and a peak optical-X-ray luminosity of a few  $10^{43} \text{ erg s}^{-1}$ . The radio luminosities of AT 2019avd – derived from the different archival and proprietary data – range between  $\sim (0.4\text{--}7.3) \times 10^{37} \text{ erg s}^{-1}$ , which are consistent with other radio-detected (jetted) TDEs ( $10^{36}$ – $10^{42} \text{ erg s}^{-1}$ , Alexander et al. 2020). The delayed radio emission with respect to the optical/X-ray flares is possibly the result of the transition in accretion state similar to other TDE candidates (Horesh, Cenko & Arcavi 2021a; Horesh et al. 2021b; Cendes et al. 2022). The IR luminosity of AT 2019avd is higher than most of TDEs, as well as the covering factor of the dusts (van Velzen et al. 2016; Jiang et al. 2021). The relatively high luminosity could be due to the contribution of the luminous soft X-rays/EUV. The covering factor is in fact still consistent with the prediction of a 1D radiative transfer model about the dust echoes in TDEs (Lu et al. 2016). Moreover, this value also suggests the circumnuclear environment of AT 2019avd is dusty and perhaps gaseous as well.

The most challenging part of the TDE scheme for AT 2019avd would be its second optical flare. Such two consecutive and non-identical optical flares, lasting for over 1000 d, have never been

observed in the TDE literature. The optical/UV emission in TDEs can originate from different processes when being observed at different phases. At early times, they can be produced by the self-interaction of debris streams (Shiokawa et al. 2015; Gezari et al. 2017); at late times, they can be emitted from the outer region of an accretion disc (van Velzen et al. 2019; Mummery 2021). The X-rays reprocessing process can occur in different phases when the X-ray emission is being reprocessed either by an optically-thick envelope formed by unbound debris or by outflows (Loeb & Ulmer 1997; Roth et al. 2016; Gezari et al. 2017; Wevers et al. 2019). In AT 2019avd, the first flare could be due to circularization paradigm but the second one should be produced by a different process as it was observed when the first one nearly quenched. The reprocessing can also be ruled out by the facts: i) while the X-rays first declined in MJD 59110–59200, the optical/UV showed a plateau rather than a decreasing trend in the photometries (see more explanation in Section 5.2); ii) the flare declined earlier in the optical/UV than in the X-rays.

The late-time (at least 5 yr apart from its peak) UV emission in several TDEs has been reported by van Velzen et al. (2019), who suggest a viscously spreading, unobscured accretion disc model to be responsible for the detection. Mummery (2021) also proposed a unified model with an evolving relativistic thin disc to explain UV and X-ray behaviours in TDEs. However, such late-time UV emission is relatively faint compared to the peak of the flare, only contributing 0.2–5.6 per cent of the total bolometric energy of a TDE (van Velzen et al. 2019). The second flare of AT 2019avd is apparently much more luminous than this. Though the second plateau present in  $\sim$ MJD 59483–59580 of the UV light curve (see Figs 2 and A1) is similar to the late-time UV plateau studied by van Velzen et al. (2019).

Chen et al. (2022) proposed a two-phase TDE scenario, in which the first flare of AT 2019avd is due to the stream self-collision (i.e. circularization) and the second flare due to a delayed accretion. For the origin of optical/UV emission of the second flare, they hinted the reprocessing by an outflow or being directly emitted from the outer region of the late-forming disc, though no details were provided. Compared to their work, we propose an accretion disc scenario with three distinct accretion rates to further elaborate the origins of the overall multiwavelength emission during the second flaring episode as follows: a compact, hot inner disc region with the highest accretion rate, emitting mainly in soft X-rays; a middle region possibly obscured by outflows; and a truncated outer disc region with a mild accretion rate, dominated by UV and relatively weak optical emissions. Moreover, the optical emission lines were produced by UV reprocessing from the gas locating at sub-pc away from the disc. A drawback of this picture is how a late-formed accretion disc emits at a super-Eddington rate  $\sim 600$ – $800 \text{ d}$  (see Section 5.1.4) after a TDE.

More exotic scenarios, such as a stellar binary TDE candidate and a TDE disrupted by a SMBH binary, were discussed for AT 2019avd in Malyali et al. (2021). By statistically studying 70 X-ray selected TDE candidates, Auchettl et al. (2017) found that the column densities of binary TDE candidates are highly enhanced with respect to their Galactic absorption along the line of sight and persist without decreasing beyond 1.5 yr. This result is in good agreement with the TDE scenario that the X-ray is being reprocessed into longer wavelengths at early times of the event. However, different from the above candidates, the column density of AT 2019avd is relatively low, consistent with the Galactic absorption in the direction of the transient. This implies that the X-ray flare is unexpected to be observed soon after a TDE. Even if considering an extreme case in which we viewed nearly through the optically thin funnel region

(Dai et al. 2018; Thomsen et al. 2022), where the inner disc is mostly exposed to us, there should have been strong X-ray emission from the first flare as well. However, evidence such as lack of Bowen lines in the first flare and the further enhanced IR emission associated with the second flare do not support this scenario. In summary, it seems very unlikely that a second TDE caused the second optical flare of AT 2019avd.

In addition, the combination of multiband brightening, strong broad and narrow emission lines, and slow decay of luminosities constitutes a new class of transients occurring in the galaxy centre, with the best-studied example being AT 2017bgt (Trakhtenbrot et al. 2019). A ‘rejuvenated’ SMBH which experiences a sudden enhancement or re-ignition of their accretion would produce an intense UV/optical emission. More specifically, AT 2017bgt has shown prolonged enhanced multiband emission from optical to X-ray with little variability for over 400 d, a hard X-ray spectrum with a photon index of  $\sim 1.9$  and a double-peak emission line around 4680 Å; (Trakhtenbrot et al. 2019). Even though AT 2019avd has also shown optical enhancement for over 900 d accompanied with strong X-ray emission, it has shown much higher and faster variability – multiple rises and declines – in its photometry, combined with its ultra-soft X-ray spectrum, both of which make it very different from AT 2017bgt.

## 6 CONCLUSIONS

AT 2019avd has been monitored by ZTF since 2019 and its long-term photometry shows two consecutive flares but with different shapes. X-ray observations performed during the second flare reveal luminous and ultra-soft X-ray emission. We report for the first time the radio (VLA and VLBA) detections of this transient near the peak of the second flare and when the flare was nearly quenched, respectively.

We propose that the UV and X-rays are produced in the outer and inner regions of the accretion disc, respectively, while the optical and IR emission detected by ZTF (likely line-dominated) and *WISE* are likely produced by the reprocessing occurred in the gas and dust residing in the circumgalactic medium of the host galaxy. The  $\sim 90$ –130-d delay between the UV and X-ray decay requires the disc to be geometrically thick, optically thin with a super-Eddington accretion rate, which then moves to a sub-Eddington regime at later times (see schematics of the multiwavelength emission in Fig. 9). The radio properties change between the two disc regimes, possibly suggesting an evolving outflow related to the BH accretion (e.g. winds/jets). The observed Eddington-scaled peak luminosity of  $\sim 0.3 L_{\text{Edd}}$  could be underestimated (e.g. if a portion of the photons are emitted in the unobserved EUV band, if some (undetected) outflows carry materials away, and/or if the mass of the SMBH is overestimated).

We highlight three crucial epochs of the temporal evolution of this transient which we interpret as follows:

- (1) First flare: the ignition of the BH activity;
- (2) Second flare: formation of a slim disc flaring in from optical to X-ray bands with super-Eddington luminosity, associated with a steep optically-thin radio spectrum.
- (3) Post-flare: the accretion disc evolves to a sub-Eddington low-luminosity state, associated with a compact optically-thick radio emission.

Which type of transient could simultaneously explain these three stages? A TDE is the most plausible scenario to account for the properties of the first flare. The successive convoluted evolution of AT 2019avd with a second flare with a long, luminous plateau, and

the following luminosity decrease do not simply fit in a single class of transients. The possible accretion disc formation at the second flare and the disc transition to a low state with the consequent ejection of a compact outflow could reconcile with i) a specific type of jetted TDEs with particularly evolving disc properties (Ricarte et al. 2016; Gezari et al. 2017; Coughlin et al. 2019) or ii) a class of AGN which change their disc-jet coupling along their duty cycle (e.g. Czerny & You 2016; Davis & Tchekhovskoy 2020; Fernández-Ontiveros & Muñoz-Darias 2021; Moravec et al. 2022). However, both interpretations fail in explaining some of the multiband properties of AT 2019avd, e.g. the long double-peaked optical light curve and the late-time bright X-ray emission in case of a TDE, or the soft X-ray spectrum in case of an AGN. Further theoretical work and long multiwavelength monitoring of AT 2019avd are needed to verify these interpretations.

## ACKNOWLEDGEMENTS

We thank the anonymous referee for careful reading of the paper and the useful comments. The authors thank G. Bruni for his support on the radio calibration and data re-processing. The authors thank Pu Du, Shuang-Nan Zhang, Jianmin Wang, and Lian Tao for the discussion. YW acknowledges support from the Royal Society Newton Fund. RDB acknowledges the support from PRIN INAF 1.05.01.88.06 ‘Towards the SKA and CTA era: discovery, localization, and physics of transient sources’. XLY thanks the support by Shanghai Sailing Program (21YF1455300), China Postdoctoral Science Foundation (2021M693267), and the National Science Foundation of China (12103076). HY acknowledges support from the Youth Innovation Promotion Association of the CAS (No. 2019060). CJ acknowledges The National Natural Science Foundation of China through grant 11873054, and the support by the Strategic Pioneer Program on Space Science, Chinese Academy of Sciences through grant XDA15052100.

## DATA AVAILABILITY

The scientific results reported in this paper are based on proprietary VLA (20A-514) and VLBA (BW142A, BW142B) data and archival observations made by VLASS, *WISE*, ZTF, *Swift* and *NICER*. The radio data of VLA, VLBA and VLASS can be accessed through the NRAO web portal.<sup>12</sup> The X-ray data of *Swift* and *NICER* can be downloaded through NASA’s HEASARC interface.<sup>13</sup> The other links have been provided in the manuscript.

## REFERENCES

- Abramowicz M. A., Czerny B., Lasota J. P., Szuszkiewicz E., 1988, *ApJ*, 332, 646  
 Alam S. et al., 2015, *ApJS*, 219, 12  
 Alexander K. D., Berger E., Guillochon J., Zauderer B. A., Williams P. K. G., 2016, *ApJ*, 819, L25  
 Alexander K. D., van Velzen S., Horesh A., Zauderer B. A., 2020, *Space Sci. Rev.*, 216, 81  
 Arcodia R. et al., 2021, *Nature*, 592, 704  
 Arnaud K. A., 1996, in Jacoby G. H., Barnes J., eds, ASP Conf. Ser. Vol. 101, Astronomical Data Analysis Software and Systems V. Astron. Soc. Pac., San Francisco, p. 17  
 Auchettl K., Guillochon J., Ramirez-Ruiz E., 2017, *ApJ*, 838, 149  
 Baldi R. D. et al., 2021, *MNRAS*, 508, 2019

<sup>12</sup><https://data.nrao.edu/portal/#/>

<sup>13</sup><https://heasarc.gsfc.nasa.gov/db-perl/W3Browse/w3browse.pl>



- Balmaverde B., Capetti A., 2006, *A&A*, 447, 97
- Becker R. H., White R. L., Helfand D. J., 1995, *ApJ*, 450, 559
- Bellm E. C. et al., 2019, *PASP*, 131, 018002
- Berger E., Zauderer A., Pooley G. G., Soderberg A. M., Sari R., Brunthaler A., Bietenholz M. F., 2012, *ApJ*, 748, 36
- Bianchi L., Herald J., Efremova B., Girardi L., Zbot A., Marigo P., Conti A., Shiao B., 2011, *Ap&SS*, 335, 161
- Blandford R. D., McKee C. F., 1982, *ApJ*, 255, 419
- Bloom J. S. et al., 2011, *Science*, 333, 203
- Blumenthal G. R., Gould R. J., 1970, *Rev. Mod. Phys.*, 42, 237
- Boller T., Brandt W. N., Fink H., 1996, *A&A*, 305, 53
- Briggs D. S., 1995, PhD thesis, New Mexico Institute of Mining and Technology
- Calzetti D., Armus L., Bohlin R. C., Kinney A. L., Koornneef J., Storchi-Bergmann T., 2000, *ApJ*, 533, 682
- Cannizzaro G. et al., 2021, *MNRAS*, 504, 792
- Cendes Y., Alexander K. D., Berger E., Eftekhari T., Williams P. K. G., Chornock R., 2021, *ApJ*, 919, 127
- Cendes Y. et al., 2022, *ApJ*, 938, 28
- Cenko S. B. et al., 2012, *ApJ*, 753, 77
- Chan C.-H., Piran T., Krolik J. H., Saban D., 2019, *ApJ*, 881, 113
- Chen J.-H., Dou L.-M., Shen R.-F., 2022, *ApJ*, 928, 63
- Condon J. J., Huang Z.-P., Yin Q. F., Thuan T. X., 1991, *ApJ*, 378, 65
- Condon J. J., Cotton W. D., Greisen E. W., Yin Q. F., Perley R. A., Taylor G. B., Broderick J. J., 1998, *AJ*, 115, 1693
- Conroy C., Gunn J. E., White M., 2009, *ApJ*, 699, 486
- Coughlin E. R., Armitage P. J., Lodato G., Nixon C. J., 2019, *Space Sci. Rev.*, 215, 45
- Curd B., Narayan R., 2019, *MNRAS*, 483, 565
- Cutri R. M. et al., 2013, VizieR Online Data Catalog, II/328
- Czerny B., You B., 2016, *Astron. Nachr.*, 337, 73
- Dai L., McKinney J. C., Roth N., Ramirez-Ruiz E., Miller M. C., 2018, *ApJ*, 859, L20
- Davis S. W., Tchekhovskoy A., 2020, *ARA&A*, 58, 407
- Deller A. T. et al., 2011, *PASP*, 123, 275
- Díaz Trigo M., Boirin L., 2016, *Astron. Nachr.*, 337, 368
- Edelson R. A., Krolik J. H., 1988, *ApJ*, 333, 646
- Eftekhari T., Berger E., Zauderer B. A., Margutti R., Alexander K. D., 2018, *ApJ*, 854, 86
- Falcke H., Biermann P. L., 1995, *A&A*, 293, 665
- Falcke H., Nagar N. M., Wilson A. S., Ulvestad J. S., 2000, *ApJ*, 542, 197
- Falcke H., K rding E., Markoff S., 2004, *A&A*, 414, 895
- Fender R. P., Belloni T. M., Gallo E., 2004, *MNRAS*, 355, 1105
- Fern ndez-Ontiveros J. A., Mu oz-Darias T., 2021, *MNRAS*, 504, 5726
- Filippenko A. V., 1997, *ARA&A*, 35, 309
- Fiore F. et al., 2017, *A&A*, 601, A143
- Foreman-Mackey D., Hogg D. W., Lang D., Goodman J., 2013, *PASP*, 125, 306
- Frederick S. et al., 2019, *ApJ*, 883, 31
- Frederick S. et al., 2021, *ApJ*, 920, 56
- Gezari S., 2021, *ARA&A*, 59, 21
- Gezari S. et al., 2006, *ApJ*, 653, L25
- Gezari S. et al., 2012, *Nature*, 485, 217
- Gezari S., Cenko S. B., Arcavi I., 2017, *ApJ*, 851, L47
- Ghisellini G., Padovani P., Celotti A., Maraschi L., 1993, *ApJ*, 407, 65
- Giustini M., Miniutti G., Saxton R. D., 2020, *A&A*, 636, L2
- Goodrich R. W., 1995, *ApJ*, 440, 141
- Goodwin A. J. et al., 2022, *MNRAS*, 511, 5328
- Granot J., Sari R., 2002, *ApJ*, 568, 820
- Greisen E. W., 2003, in Heck A., ed., *Information Handling in Astronomy - Historical Vistas*, Astrophysics and Space Science Library, Vol. 285. Kluwer, Dordrecht, p. 109
- Gromadzki M. et al., 2019, *A&A*, 622, L2
- Guainazzi M., Matt G., Fiore F., Perola G. C., 2002, *A&A*, 388, 787
- Guolo M., Ruschel-Dutra D., Grupe D., Peterson B. M., Storchi-Bergmann T., Schimoia J., Nemmen R., Robinson A., 2021, *MNRAS*, 508, 144
- Hammerstein E. et al., 2022, *ApJ*, 942, 9
- Hardcastle M. J., Evans D. A., Croston J. H., 2007, *MNRAS*, 376, 1849
- Heckman T. M., Best P. N., 2014, *ARA&A*, 52, 589
- HI4PI Collaboration et al., 2016, *A&A*, 594, A116
- Hills J. G., 1975, *Nature*, 254, 295
- Hinkle J. T. et al., 2021, *MNRAS*, 500, 1673
- Ho L. C., 2008, *ARA&A*, 46, 475
- Hogan B. S., Lister M. L., Kharb P., Marshall H. L., Cooper N. J., 2011, *ApJ*, 730, 92
- Holoien T. W. S. et al., 2014, *MNRAS*, 445, 3263
- Horeish A., Cenko S. B., Arcavi I., 2021a, *Nat. Astron.*, 5, 491
- Horeish A., Sfaradi I., Fender R., Green D. A., Williams D. R. A., Bright J. S., 2021b, *ApJ*, 920, L5
- Hung T. et al., 2019, *ApJ*, 879, 119
- Hung T. et al., 2021, *ApJ*, 917, 9
- Intema H. T., Jagannathan P., Mooley K. P., Frail D. A., 2017, *A&A*, 598, A78
- Irwin J. A., Henriksen R. N., Krause M., Wang Q. D., Wiegert T., Murphy E. J., Heald G., Perlman E., 2015, *ApJ*, 809, 172
- Ivezi  Z., Connelly A. J., VanderPlas J. T., Gray A., 2014, *Statistics, Data Mining, and Machine Learning in Astronomy: A Practical Python Guide for the Analysis of Survey Data*. Princeton University Press, Princeton, New Jersey
- Jiang N., Dou L., Wang T., Yang C., Lyu J., Zhou H., 2016, *ApJ*, 828, L14
- Jiang N., Wang T., Hu X., Sun L., Dou L., Xiao L., 2021, *ApJ*, 911, 31
- Johnson B. D., Leja J., Conroy C., Speagle J. S., 2021, *ApJS*, 254, 22
- Karouzos M., Woo J.-H., Bae H.-J., 2016, *ApJ*, 819, 148
- Kellermann K. I., Sramek R., Schmidt M., Shaffer D. B., Green R., 1989, *AJ*, 98, 1195
- King A., Pounds K., 2015, *ARA&A*, 53, 115
- King A. L., Lohfink A., Kara E., 2017, *ApJ*, 835, 226
- Komossa S., 2008, *Rev. Mex. Astron. Astrofis. Conf. Ser. Vol. 32, Narrow-line Seyfert 1 Galaxies*. *Rev. Mex. Astron. Astrofis. Conf. Ser.*, p. 86
- Komossa S., Bade N., 1999, *A&A*, 343, 775
- Krolik J., Piran T., Svirski G., Cheng R. M., 2016, *ApJ*, 827, 127
- Kubota A., Done C., 2018, *MNRAS*, 480, 1247
- Lacy M. et al., 2020, *PASP*, 132, 035001
- LaMassa S. M. et al., 2015, *ApJ*, 800, 144
- Laor A., Baldi R. D., Behar E., 2019, *MNRAS*, 482, 5513
- Lawrence A. et al., 2007, *MNRAS*, 379, 1599
- Leighly K. M., Moore J. R., 2004, *ApJ*, 611, 107
- Leloudas G. et al., 2019, *ApJ*, 887, 218
- Loeb A., Ulmer A., 1997, *ApJ*, 489, 573
- Lu W., Kumar P., Evans N. J., 2016, *MNRAS*, 458, 575
- Lyu J., Rieke G. H., Smith P. S., 2019, *ApJ*, 886, 33
- Lyubarskii Y. E., 1997, *MNRAS*, 292, 679
- MacLeod M., Guillochon J., Ramirez-Ruiz E., 2012, *ApJ*, 757, 134
- Mainzer A. et al., 2014, *ApJ*, 792, 30
- Malyali A. et al., 2020, *Astron. Telegram*, 13712, 1
- Malyali A. et al., 2021, *A&A*, 647, A9
- Markoff S., Nowak M. A., Wilms J., 2005, *ApJ*, 635, 1203
- Marshall K., Ryle W. T., Miller H. R., 2008, *ApJ*, 677, 880
- Mathur S., 2000, *MNRAS*, 314, L17
- Matsumoto T., Piran T., 2021, *MNRAS*, 507, 4196
- Matt G., Guainazzi M., Maiolino R., 2003, *MNRAS*, 342, 422
- Mattila S., Meikle W. P. S., 2001, *MNRAS*, 324, 325
- Mattila S. et al., 2018, *Science*, 361, 482
- McMullin J. P., Waters B., Schiebel D., Young W., Golap K., 2007, *ASP Conf. Ser. Vol. 376, Astronomical Data Analysis Software and Systems XVI*. Astron. Soc. Pac., San Francisco, p. 127
- Metzger B. D., Stone N. C., 2016, *MNRAS*, 461, 948
- Million C. et al., 2016, *ApJ*, 833, 292
- Miniutti G. et al., 2019, *Nature*, 573, 381
- Moravec E., Svoboda J., Borkar A., Boorman P., Kynoch D., Panessa F., Mingo B., Guainazzi M., 2022, *A&A*, 662, A28
- Mullin L. M., Hardcastle M. J., 2009, *MNRAS*, 398, 1989
- Mummery A., 2021, preprint ([arXiv:2104.06212](https://arxiv.org/abs/2104.06212))
- Nagar N. M., Falcke H., Wilson A. S., 2005, *A&A*, 435, 521
- Netzer H., 2015, *ARA&A*, 53, 365
- Nims J., Quataert E., Faucher-Gigu re C.-A., 2015, *MNRAS*, 447, 3612

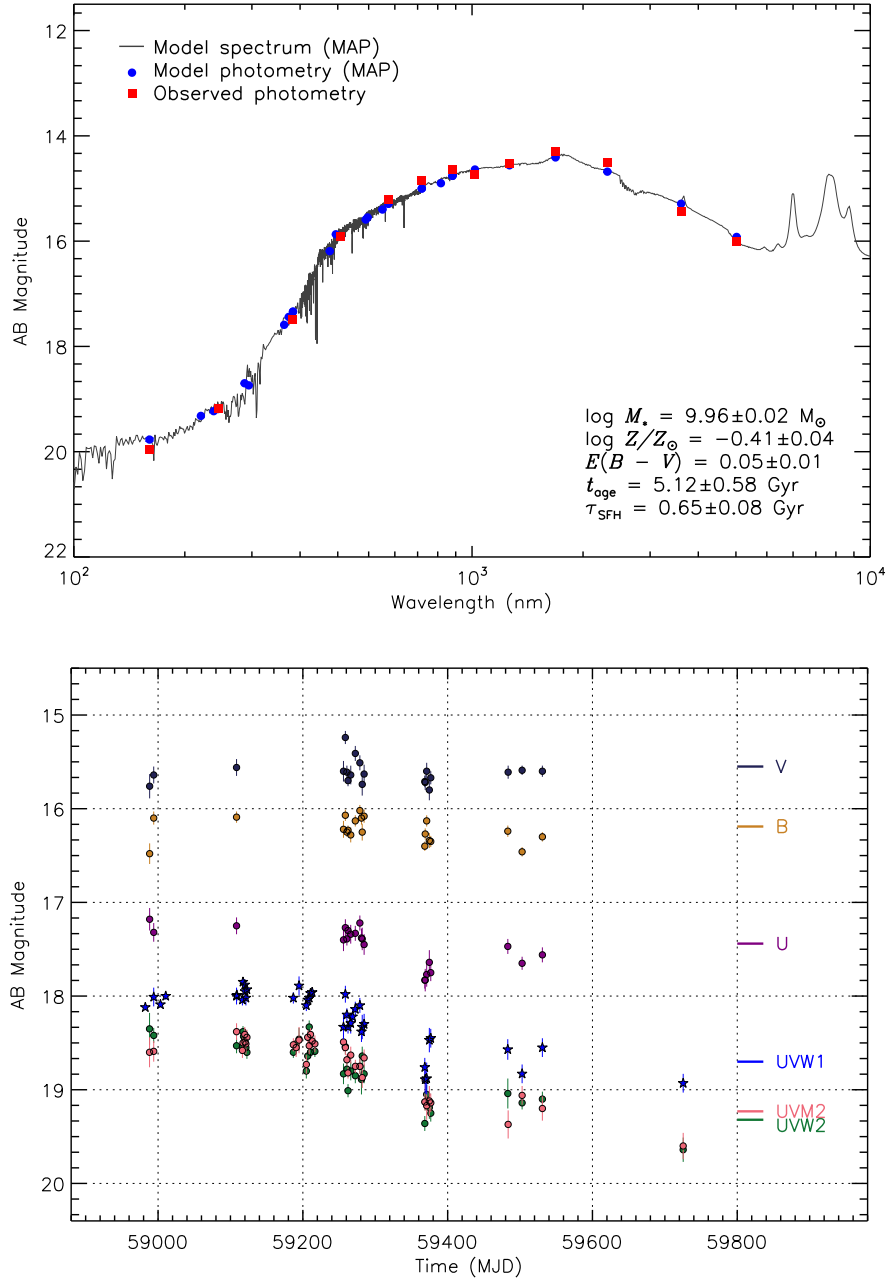
- Nordin J., Brinnet V., Giomi M., Santen J. V., Gal-yam A., Yaron O., Schulze S., 2019, *Transient Name Server Discovery Report*, 2019-236, 1
- O'Dea C. P., Saikia D. J., 2021, *A&A Rev.*, 29, 3
- Ofek E. O. et al., 2013, *ApJ*, 763, 42
- Osterbrock D. E., Pogge R. W., 1985, *ApJ*, 297, 166
- Padovani P., 2017, *Nat. Astron.*, 1, 0194
- Panessa F., Baldi R. D., Laor A., Padovani P., Behar E., McHardy I., 2019, *Nat. Astron.*, 3, 387
- Pasham D. R., van Velzen S., 2018, *ApJ*, 856, 1
- Pasham D. R., Cenko S. B., Sadowski A., Guillochon J., Stone N. C., van Velzen S., Cannizzo J. K., 2017, *ApJ*, 837, L30
- Pastorello A. et al., 2004, *MNRAS*, 347, 74
- Peterson B. M. et al., 2004, *ApJ*, 613, 682
- Planck Collaboration et al., 2020, *A&A*, 641, A6
- Predehl P. et al., 2021, *A&A*, 647, A1
- Proga D., 2005, *ApJ*, 630, L9
- Rakshit S., Stalín C. S., Chand H., Zhang X.-G., 2017, *ApJS*, 229, 39
- Rau U., Cornwell T. J., 2011, *A&A*, 532, A71
- Rees M. J., 1988, *Nature*, 333, 523
- Ricarte A., Natarajan P., Dai L., Coppi P., 2016, *MNRAS*, 458, 1712
- Ricci C. et al., 2020, *ApJ*, 898, L1
- Ricci C. et al., 2021, *ApJS*, 255, 7
- Roth N., Kasen D., Guillochon J., Ramirez-Ruiz E., 2016, *ApJ*, 827, 3
- Saxton R., Komossa S., Auchettl K., Jonker P. G., 2020, *Space Sci. Rev.*, 216, 85
- Schlafly E. F., Finkbeiner D. P., 2011, *ApJ*, 737, 103
- Sfaradi I., Horeish A., Fender R., Green D. A., Williams D. R. A., Bright J., Schulze S., 2022, *ApJ*, 933, 176
- Shakura N. I., Sunyaev R. A., 1973, *A&A*, 500, 33
- Shappee B. J. et al., 2014, *ApJ*, 788, 48
- Shepherd M. C., 1997, in Hunt G., Payne H., eds, *ASP Conf. Ser. Vol. 125, Astronomical Data Analysis Software and Systems VI*. Astron. Soc. Pac., San Francisco, p. 77
- Shimwell T. W. et al., 2017, *A&A*, 598, A104
- Shiokawa H., Krolik J. H., Cheng R. M., Piran T., Noble S. C., 2015, *ApJ*, 804, 85
- Shu X. et al., 2020, *Nat. Commun.*, 11, 5876
- Stein R. et al., 2021, *Nat. Astron.*, 5, 510
- Tadhunter C., Spence R., Rose M., Mullaney J., Crowther P., 2017, *Nat. Astron.*, 1, 0061
- Tchekhovskoy A., Metzger B. D., Giannios D., Kelley L. Z., 2014, *MNRAS*, 437, 2744
- Terashima Y., Wilson A. S., 2003, *ApJ*, 583, 145
- Tetarenko B. E., Lasota J. P., Heinke C. O., Dubus G., Sivakoff G. R., 2018, *Nature*, 554, 69
- Thomsen L. L., Kwan T., Dai L., Wu S., Ramirez-Ruiz E., 2022, *ApJL*, 937, L28
- Trakhtenbrot B. et al., 2019, *Nat. Astron.*, 3, 242
- Ulvestad J. S., Antonucci R. R. J., 1997, *ApJ*, 488, 621
- Urry C. M., Padovani P., 1995, *PASP*, 107, 803
- Urry C. M., Padovani P., Stickel M., 1991, *ApJ*, 382, 501
- Uttley P., Cackett E. M., Fabian A. C., Kara E., Wilkins D. R., 2014, *A&A Rev.*, 22, 72
- van Velzen S., K rding E., Falcke H., 2011, *MNRAS*, 417, L51
- van Velzen S. et al., 2016, *Science*, 351, 62
- van Velzen S., Stone N. C., Metzger B. D., Gezari S., Brown T. M., Fruchter A. S., 2019, *ApJ*, 878, 82
- van Velzen S., Pasham D. R., Komossa S., Yan L., Kara E. A., 2021, *Space Sci. Rev.*, 217, 63
- Villarroel B., Nyholm A., Karlsson T., Comer n S., Korn A. J., Sollerman J., Zackrisson E., 2017, *ApJ*, 837, 110
- Wen S., Jonker P. G., Stone N. C., Zabludoff A. I., Psaltis D., 2020, *ApJ*, 897, 80
- Wevers T. et al., 2019, *MNRAS*, 488, 4816
- Woosley S. E., Pinto P. A., Martin P. G., Weaver T. A., 1987, *ApJ*, 318, 664
- Wright E. L. et al., 2010, *AJ*, 140, 1868
- Xu S., 2022, *ApJ*, 934, 136
- Yan L. et al., 2019, *ApJ*, 874, 44
- Yang X. et al., 2020, *ApJ*, 904, 200
- Yuan F., Narayan R., 2014, *ARA&A*, 52, 529
- Zabludoff A. et al., 2021, *Space Sci. Rev.*, 217, 54
- Zakamska N. L., Greene J. E., 2014, *MNRAS*, 442, 784
- Zauderer B. A. et al., 2011, *Nature*, 476, 425
- Zoghbi A., Fabian A. C., Uttley P., Miniutti G., Gallo L. C., Reynolds C. S., Miller J. M., Ponti G., 2010, *MNRAS*, 401, 2419

## APPENDIX A: UVOT HOST SUBTRACTION

We compile the host galaxy (2MASX J08233674+0423027) SED using archival observations in the UV through mid-IR bands, we choose magnitudes derived from extended apertures, which for most catalogs are defined at the petrosian radius of the galaxies ( $\sim 10$  arcsec for this host). In the mid-IR, we use *WISE* (Cutri et al. 2013) W1 and W2 magnitudes. In the near-IR we use UKIDSS (Lawrence et al. 2007) *K*, *H*, *J*, and *Y* bands. We use SDSS DR12 (Alam et al. 2015) magnitudes in *u*, *g*, *r*, *i*, and *z* optical bands. Finally, for the UV we perform aperture photometry in the GALEX (Bianchi et al. 2011) NUV and FUV images with the GPHOTON package (Million et al. 2016) using a 10 arcsec aperture.

To estimate the host galaxy properties and its brightness in the UVOT bands, we model the SED using the flexible stellar population synthesis (FSPS, Conroy, Gunn & White 2009) module. We use the Prospector (Johnson et al. 2021) software to run a Markov Chain Monte Carlo (MCMC) sampler (Foreman-Mackey et al. 2013). We assume an exponentially decaying star formation history (SFH), and a flat prior on the five free model parameters: stellar mass ( $M_*$ ), stellar metallicity ( $Z$ ),  $E(B - V)$  extinction index (assuming the extinction law from Calzetti et al. 2000), the stellar population age ( $t_{\text{age}}$ ), and the e-folding time of the exponential decay of the SFH ( $\tau_{\text{SFH}}$ ).

Using the median and  $1\sigma$  confidence intervals of the posteriors, we derive the host properties, which are shown in the upper panel of Fig. A1 alongside the observed SED and modeled SED/spectrum. We estimate the host galaxy fluxes in the UVOT bands from the posterior distribution of the population synthesis models. The host contribution (see lines in the upper panel of Fig. A1) was then subtracted from the observed photometry, which was also corrected for foreground Galactic extinction. The uncertainty on the host galaxy model was propagated into our measurement of the host-subtracted photometry shown in the lower panel of Fig. A1.



**Figure A1.** *Upper:* Host galaxy spectral energy distribution and best-fitting template used to synthesize host galaxy magnitudes in the UVOT bands. *Lower:* UVOT photometries including the contribution from the host galaxy. The lines indicate the magnitude level of the host galaxy for each UVOT filter. The *UVW1* data marked with stars are used to represent the UV evolution in Fig. 2.

**Table B1.** Best-fitting parameters of the SED in the three epochs.

epoch	MJD	band	$\log_{10}(kT_{\text{bb}})/\Gamma$	$\log_{10}(R_{\text{bb}})$	$\log_{10}(F_{\text{bb}})/\log_{10}(F_{\text{pl}})$	stat/v
Pre-peak	58994.9	IR	$3.05 \pm 0.02$	$17.07 \pm 0.02$	$-11.12 \pm 0.01$	–
	58994.0	OUV	$4.27 \pm 0.02$	$14.32 \pm 0.03$	$-11.73 \pm 0.06$	13.9/3
	58994.0	X-ray	$6.15 \pm 0.02$	$10.57 \pm 0.04$	$-11.85 \pm 0.07$	17.95/13
Around-peak	59151.9	IR	$3.00 \pm 0.02$	$17.14 \pm 0.03$	$-11.18 \pm 0.01$	–
	59108.4	OUV	$4.17 \pm 0.02$	$14.54 \pm 0.04$	$-11.70 \pm 0.04$	10.0/4
	59108.4	X-ray	$6.13 \pm 0.01$	$11.10 \pm 0.02$	$-10.89 \pm 0.02$	85.4/77
	59519.1	IR	$2.96 \pm 0.02$	$17.15 \pm 0.04$	$-11.33 \pm 0.01$	–
Post-flare	59530.8	OUV	$3.93 \pm 0.25$	$14.83^{+1.26}_{-0.64}$	$-12.10^{+1.32}_{-0.39}$	3.25/1
	59483-59725	X-ray	$2.09^{+0.62}_{-0.54}$	–	$-13.35 \pm 0.15$	1.8/7

*Note.* Column description: (1) epoch; (2) MJD observation date; (3) observation band; (4) the blackbody temperature in units of K/the photon index; (5) the inner radius in units of cm; (6) the (un)absorbed flux in units of  $\text{erg cm}^2 \text{s}^{-1}$ ; (7) the goodness of fit. The Cash and  $\chi^2$  statistics are applied to assess the X-ray and the optical-to-UV SED modelling, respectively.

## APPENDIX B: BEST-FITTING PARAMETERS OF THE SED IN DIFFERENT EPOCHS

We have fitted the SED from IR to soft X-ray with three individual blackbody components and show the best-fitting parameters in Table B1. The uncertainties of each parameters were estimated using Monte Carlo simulations and are quoted at  $1\sigma$  confidence level.

## APPENDIX C: NON-THERMAL IR EMISSION

If we assume that the IR emission is non-thermal, then it would have to be synchrotron radiation produced by relativistic electrons that are either more energetic than those producing the radio emission, or that are in a stronger ambient magnetic field. These electrons should cool down quicker than the ones emitting in the radio, which could potentially be related with the steepening of the IR photon index (see Fig. 3). The transition from a flat spectral index to a negative one could also suggest that the emitter is expanding, thus becoming more transparent to its own emission.

To properly assess whether this is feasible, we model the IR emitter as a magnetized non-relativistic blob. The conditions that this model needs to take into account are: i) the IR flare duration time in the observer frame ( $t_{\text{IR}} \sim 300$  d); ii) the frequency of the emitted photons ( $\nu_{\text{IR}} = 8.8 \times 10^{13}$  Hz); iii) the peak brightness of the flare ( $F_{\text{IR}} \sim 6$  mJy); and iv) that a bright ( $\sim$ few mJy) flare is not simultaneously seen in the radio band. Both the synchrotron cooling time of a particle,  $t_{\text{syn}} \propto B^2 E_e^{-1}$ , and the characteristic frequency of the emitted photons,  $\nu_{\text{syn}} \propto B E_e^2$ , depend on the energy of the electron,  $E_e$ , and the magnetic field intensity in the emitter,  $B$  (Blumenthal & Gould 1970). We assume that the duration of the

IR flare is given by the electron synchrotron cooling time, and that the frequency of the synchrotron photons matches the frequency of the observed IR photons. Thus, conditions i) and ii) become  $t_{\text{syn}}(E, B) = t_{\text{IR}}$  and  $\nu_{\text{IR}} = \nu_{\text{syn}}$ , from where we can derive the magnetic field intensity in the jet and the energy of the emitting electrons ( $B \approx 23$  mG and  $E_e \approx 300$  MeV, respectively). This calculation implicitly assumes that  $B$  does not vary significantly during the flare. In addition, one can assume that the observed flux is due to optically thin synchrotron emission from a relativistic electron population of the form  $N(E) dE = N_0 E^{-p} dE$ , with  $p \sim 2.2$ . We further assume that the minimum and maximum energies of the electrons are 1 MeV and 1 TeV, respectively, and normalize the electron distribution by adopting an energy condition,  $U_e = \eta_B U_B$ , which ties the energy densities in relativistic electrons and the magnetic field via the factor  $\eta_B$  ( $\eta_B = 1$  corresponds to energy equipartition, usually assumed as a reference case). With that, we can obtain  $N_0$  from  $U_e = \int_{E_{\text{min}}}^{E_{\text{max}}} E N(E) dE$ , and use it to calculate the optically-thin synchrotron SED at any given frequency (Blumenthal & Gould 1970). Considering that the emitter is homogeneous and spherical, from condition iii) we can estimate its size,  $R_0$ . We do this for values of  $\eta_B$  in the range 0.01–100. We obtain  $R_0 \approx 7 \pm 6 \times 10^{18}$  cm. However, this large size of the emitter contradicts condition iv), as it leads to a synchrotron-self absorption opacity  $\tau_{\text{SSA}} \ll 1$  even at radio frequencies. The small opacity means that the putative IR synchrotron spectrum should extend to radio frequencies with the same spectral index, yielding a flux  $\gg 10$  mJy. This is a strong argument against this synchrotron interpretation.

This paper has been typeset from a  $\text{\LaTeX}$  file prepared by the author.